

## ARG42252 Mouse IgG2a Isotype Control antibody [MOPC-173] (Biotin)

Package: 100 µg  
Store at: 4°C

### Summary

Product Description	Biotin-conjugated Mouse Monoclonal antibody [MOPC-173] as a negative control antibody for Mouse IgG2a
Species Does Not React With	Hu, Ms, Rat
Tested Application	Control, FACS
Specificity	This mouse IgG2a monoclonal antibody (clone MOPC-173) reacts with an unknown epitope. It does not react with a variety of resting, activated, live, and fixed mouse, rat and human tissues.
Host	Mouse
Clonality	Monoclonal
Clone	MOPC-173
Isotype	IgG2a, kappa
Target Name	Mouse IgG2a
Immunogen	Induced by intraperitoneal injection of mineral oils into BALB/c mice.
Conjugation	Biotin

### Application Instructions

Application table	Application	Dilution
	Control	Assay-dependent
	FACS	Assay-dependent

Application Note	<p>Negative control: The reagent is intended as an isotype control to establish the amount of non-specific antibody binding. For your particular experiment, use the same concentration of this control antibody as the recommended working concentration of the antigen-specific antibody. Also, when working with prediluted antibodies, dilute the isotype control to the same concentration as is the concentration of the antigen-specific antibody in the prediluted antibody solution you are using. If under particular experimental conditions the background signal of the isotype control is too high (usually when working concentrations of used antibodies are above 10 µg/ml of incubation mixture), change the conditions of your experiment to reduce the background.</p> <p>* The dilutions indicate recommended starting dilutions and the optimal dilutions or concentrations should be determined by the scientist.</p>
------------------	--

### Properties

Form	Liquid
Purification	Purified
Buffer	PBS and 15 mM Sodium azide.
Preservative	15 mM Sodium azide
Concentration	1 mg/ml

**Storage instruction**

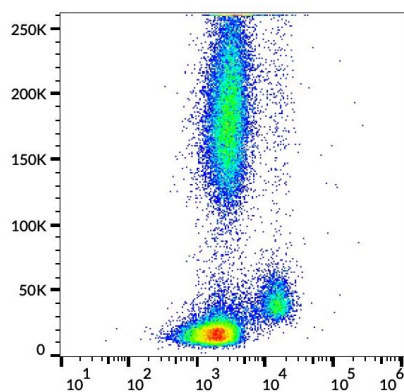
Aliquot and store in the dark at 2-8°C. Keep protected from prolonged exposure to light. Avoid repeated freeze/thaw cycles. Suggest spin the vial prior to opening. The antibody solution should be gently mixed before use.

**Note**

For laboratory research only, not for drug, diagnostic or other use.

**Images**

---



ARG42252 Mouse IgG2a Isotype Control antibody [MOPC-173] (Biotin) FACS image

Flow Cytometry: Nonspecific ARG42252 Mouse IgG2a Isotype Control antibody [MOPC-173] (Biotin) (3 µg/ml) signal on human peripheral blood.