

**ARG42234**  
anti-NPTX2 antibodyPackage: 50 µg  
Store at: -20°C

### Summary

Product Description	Rabbit Polyclonal antibody recognizes NPTX2
Tested Reactivity	Hu, Ms, Rat
Tested Application	IHC-P, WB
Host	Rabbit
Clonality	Polyclonal
Isotype	IgG
Target Name	NPTX2
Species	Human
Immunogen	A 16 amino acid peptide within aa. 170-220 of Human NPTX2.
Conjugation	Un-conjugated
Alternate Names	Neuronal pentraxin II; Neuronal pentraxin-2; NP-II; NARP; NP2

### Application Instructions

Application table	Application	Dilution
	IHC-P	5 - 20 µg/ml
	WB	0.5 - 4 µg/ml
Application Note	* The dilutions indicate recommended starting dilutions and the optimal dilutions or concentrations should be determined by the scientist.	
Observed Size	43 ~ 47 kDa	

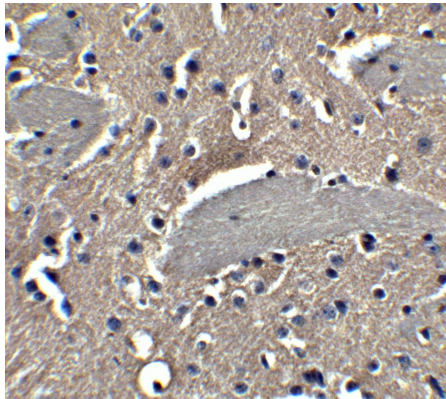
### Properties

Form	Liquid
Purification	Affinity purification with immunogen.
Buffer	PBS and 0.02% Sodium azide.
Preservative	0.02% Sodium azide
Concentration	1 mg/ml
Storage instruction	For continuous use, store undiluted antibody at 2-8°C for up to a week. For long-term storage, aliquot and store at -20°C or below. Storage in frost free freezers is not recommended. Avoid repeated freeze/thaw cycles. Suggest spin the vial prior to opening. The antibody solution should be gently mixed before use.
Note	For laboratory research only, not for drug, diagnostic or other use.

## Bioinformation

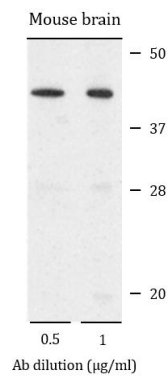
Gene Symbol	NPTX2
Gene Full Name	neuronal pentraxin II
Background	This gene encodes a member of the family of neuronal pentraxins, synaptic proteins that are related to C-reactive protein. This protein is involved in excitatory synapse formation. It also plays a role in clustering of alpha-amino-3-hydroxy-5-methyl-4-isoxazolepropionic acid (AMPA)-type glutamate receptors at established synapses, resulting in non-apoptotic cell death of dopaminergic nerve cells. Up-regulation of this gene in Parkinson disease (PD) tissues suggests that the protein may be involved in the pathology of PD. [provided by RefSeq, Feb 2009]
Function	Likely to play role in the modification of cellular properties that underlie long-term plasticity. Binds to agar matrix in a calcium-dependent manner (By similarity). [UniProt]
Calculated Mw	47 kDa
Cellular Localization	Secreted. [UniProt]

## Images



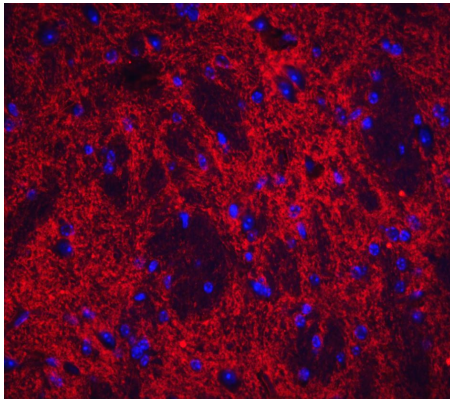
ARG42234 anti-NPTX2 antibody IHC-P image

Immunohistochemistry: Paraffin-embedded Mouse brain tissue. Tissue was fixed with formaldehyde and blocked with 10% serum for 1 hour at RT. Antigen Retrieval: Heat mediation was performed in Citrate buffer (pH 6.0). The tissue section was stained with ARG42234 anti-NPTX2 antibody at 5  $\mu\text{g}/\text{ml}$  dilution, overnight at 4°C.



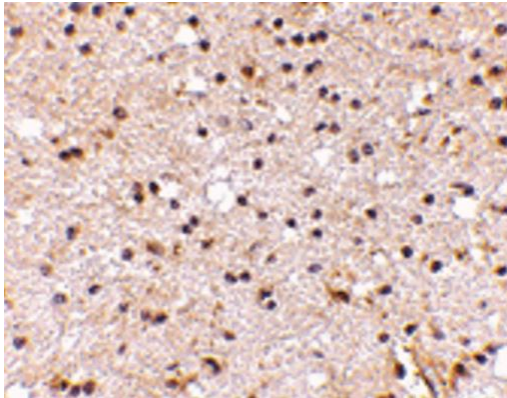
ARG42234 anti-NPTX2 antibody WB image

Western blot: 15  $\mu\text{g}$  of Mouse brain lysate stained with ARG42234 anti-NPTX2 antibody at 0.5 or 1  $\mu\text{g}/\text{ml}$  dilution and incubated at RT for 1 hour, in 5% NFDM/TBST.



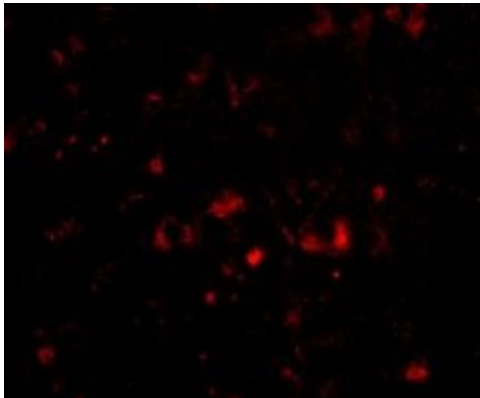
ARG42234 anti-NPTX2 antibody IHC-P image

Immunohistochemistry: 4% Paraformaldehyde-fixed Mouse brain tissue stained with ARG42234 anti-NPTX2 antibody (red) at 20 µg/ml dilution. DAPI (blue) for nuclear staining.



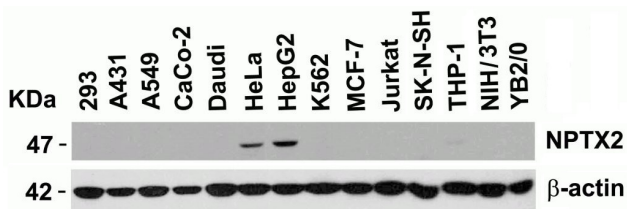
ARG42234 anti-NPTX2 antibody IHC-P image

Immunohistochemistry: Paraffin-embedded Human brain tissue. Tissue was fixed with formaldehyde and blocked with 10% serum for 1 hour at RT. Antigen Retrieval: Heat mediation was performed in Citrate buffer (pH 6.0). The tissue section was stained with ARG42234 anti-NPTX2 antibody at 5 µg/ml dilution, overnight at 4°C.



ARG42234 anti-NPTX2 antibody IHC-P image

Immunohistochemistry: 4% Paraformaldehyde-fixed Human brain tissue stained with ARG42234 anti-NPTX2 antibody at 20 µg/ml dilution.



ARG42234 anti-NPTX2 antibody WB image

Western blot: 15 µg of 293, A431, A549, CaCo-2, Daudi, HeLa, HepG2, K562, MCF-7, Jurkat, SK-N-SH, THP-1, NIH/3T3 and YB2/O cell lysates stained with ARG42234 anti-NPTX2 antibody at 2 µg/ml dilution and incubated at RT for 1 hour, in 5% NFD/MTBST.