

ARG42233 anti-NPTX1 / NP1 antibody

Package: 50 µg
Store at: -20°C

Summary

Product Description	Goat Polyclonal antibody recognizes NPTX1 / NP1
Tested Reactivity	Hu
Tested Application	IHC-P, WB
Host	Goat
Clonality	Polyclonal
Isotype	IgG
Target Name	NPTX1 / NP1
Species	Human
Immunogen	Synthetic peptide around the internal region of Human NPTX1 / NP1. (C-ERVKIETALTSLHQR) (NP_002513.2)
Conjugation	Un-conjugated
Alternate Names	Neuronal pentraxin-1; NP-I; NP1; Neuronal pentraxin I

Application Instructions

Application table	Application	Dilution
	IHC-P	5 µg/ml
	WB	1 - 3 µg/ml
Application Note	IHC-P: Antigen Retrieval: Steam tissue section in Citrate buffer (pH 6.0). WB: Recommend incubate at RT for 1h. * The dilutions indicate recommended starting dilutions and the optimal dilutions or concentrations should be determined by the scientist.	
Positive Control	Human frontal cortex	
Observed Size	~ 50 kDa	

Properties

Form	Liquid
Purification	Ammonium sulphate precipitation followed by affinity purification with immunogen.
Buffer	Tris saline (pH 7.3), 0.02% Sodium azide and 0.5% BSA.
Preservative	0.02% Sodium azide
Stabilizer	0.5% BSA
Concentration	0.5 mg/ml
Storage instruction	For continuous use, store undiluted antibody at 2-8°C for up to a week. For long-term storage, aliquot and store at -20°C or below. Storage in frost free freezers is not recommended. Avoid repeated

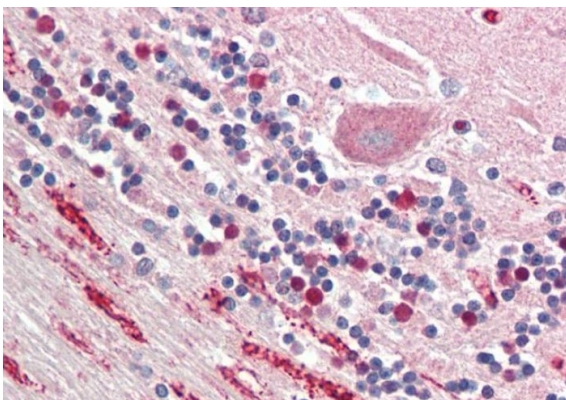
freeze/thaw cycles. Suggest spin the vial prior to opening. The antibody solution should be gently mixed before use.

Note For laboratory research only, not for drug, diagnostic or other use.

Bioinformation

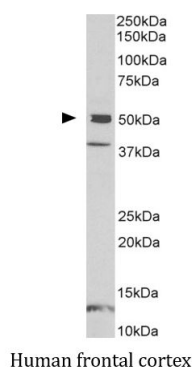
Gene Symbol	NPTX1
Gene Full Name	neuronal pentraxin I
Background	NPTX1 is a member of the neuronal pentraxin gene family. Neuronal pentraxin 1 is similar to the rat NP1 gene which encodes a binding protein for the snake venom toxin taipoxin. Human NPTX1 mRNA is exclusively localized to the nervous system. [provided by RefSeq, Jul 2008]
Function	May be involved in mediating uptake of synaptic material during synapse remodeling or in mediating the synaptic clustering of AMPA glutamate receptors at a subset of excitatory synapses. [UniProt]
Calculated Mw	47 kDa
Cellular Localization	Cytoplasmic vesicle, secretory vesicle. [UniProt]

Images



ARG42233 anti-NPTX1 / NP1 antibody IHC-P image

Immunohistochemistry: Paraffin-embedded Human cerebellum tissue. Antigen Retrieval: Steam tissue section in Citrate buffer (pH 6.0). The tissue section was stained with ARG42233 anti-NPTX1 / NP1 antibody at 5 µg/ml dilution followed by AP-staining.



ARG42233 anti-NPTX1 / NP1 antibody WB image

Western blot: 35 µg of Human frontal cortex lysate (in RIPA buffer) stained with ARG42233 anti-NPTX1 / NP1 antibody at 1 µg/ml dilution and incubated at RT for 1 hour.