

## ARG42228 anti-Prol1 / Muc10 antibody

Package: 50 µg  
Store at: -20°C

### Summary

Product Description	Goat Polyclonal antibody recognizes Prol1 / Muc10
Tested Reactivity	Ms
Tested Application	ICC/IF, IHC, IP, WB
Host	Goat
Clonality	Polyclonal
Isotype	IgG
Target Name	Prol1 / Muc10
Species	Mouse
Immunogen	Synthetic peptide around the internal region of Mouse Prol1 / Muc10. (C-QFPVRKYLEDPRY) (NP_032670.2)
Conjugation	Un-conjugated
Alternate Names	Muc10

### Application Instructions

Application table	Application	Dilution
	ICC/IF	Assay-dependent
	IHC	3 µg/ml
	IP	Assay-dependent
	WB	Assay-dependent

**Application Note** WB: Recommend incubate at RT for 1h.  
\* The dilutions indicate recommended starting dilutions and the optimal dilutions or concentrations should be determined by the scientist.

### Properties

Form	Liquid
Purification	Ammonium sulphate precipitation followed by affinity purification with immunogen.
Buffer	Tris saline (pH 7.3), 0.02% Sodium azide and 0.5% BSA.
Preservative	0.02% Sodium azide
Stabilizer	0.5% BSA
Concentration	0.5 mg/ml
Storage instruction	For continuous use, store undiluted antibody at 2-8°C for up to a week. For long-term storage, aliquot and store at -20°C or below. Storage in frost free freezers is not recommended. Avoid repeated freeze/thaw cycles. Suggest spin the vial prior to opening. The antibody solution should be gently mixed

before use.

Note

For laboratory research only, not for drug, diagnostic or other use.

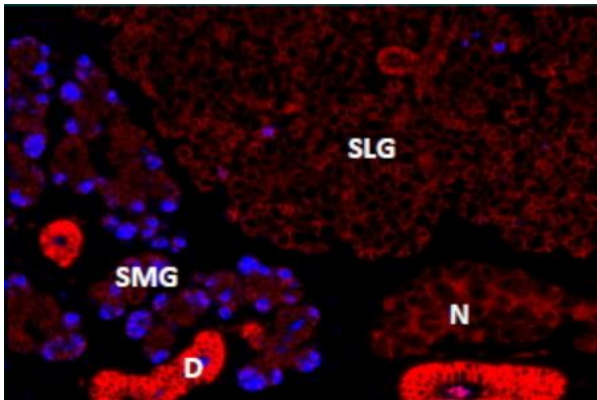
## Bioinformation

---

Gene Symbol	Prol1
Gene Full Name	proline rich, lacrimal 1
Calculated Mw	34 kDa

## Images

---



ARG42228 anti-Prol1 / Muc10 antibody IHC image

Immunohistochemistry: Staining of cells in the submandibular salivary gland (SMG), but not in the sublingual salivary gland (SLG) in mouse, using ARG42228 anti-Prol1 / Muc10 antibody (blue) at 2.9  $\mu\text{g}/\text{ml}$  dilution. Cells were co-stained with anti-Na/K-ATPase antibody (red).