

ARG42223
anti-RMI2 antibodyPackage: 50 µg
Store at: -20°C

Summary

Product Description	Rabbit Polyclonal antibody recognizes RMI2
Tested Reactivity	Hu, Ms, Rat
Tested Application	FACS, IHC-P, WB
Host	Rabbit
Clonality	Polyclonal
Isotype	IgG
Target Name	RMI2
Species	Human
Immunogen	Synthetic peptide corresponding to a sequence of Human RMI2. (KMTDLSDNPIHESMWELEVEDLHRNIP)
Conjugation	Un-conjugated
Alternate Names	C16orf75; BLM-associated protein of 18 kDa; BLAP18; RecQ-mediated genome instability protein 2; hRMI2

Application Instructions

Application table	Application	Dilution
	FACS	1:150 - 1:500
	IHC-P	1:200 - 1:1000
	WB	1:500 - 1:2000
Application Note	IHC-P: Antigen Retrieval: Heat mediation was performed in Citrate buffer (pH 6.0, epitope retrieval solution) for 20 min. * The dilutions indicate recommended starting dilutions and the optimal dilutions or concentrations should be determined by the scientist.	
Observed Size	~ 19 kDa	

Properties

Form	Liquid
Purification	Affinity purification with immunogen.
Buffer	0.2% Na ₂ HPO ₄ , 0.9% NaCl, 0.05% Sodium azide and 4% Trehalose.
Preservative	0.05% Sodium azide
Stabilizer	4% Trehalose
Concentration	0.5 mg/ml
Storage instruction	For continuous use, store undiluted antibody at 2-8°C for up to a week. For long-term storage, aliquot and store at -20°C or below. Storage in frost free freezers is not recommended. Avoid repeated

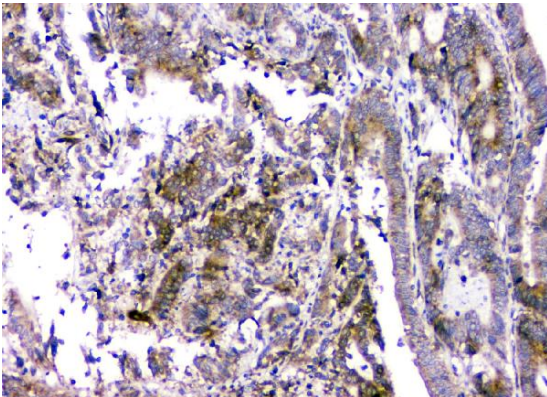
freeze/thaw cycles. Suggest spin the vial prior to opening. The antibody solution should be gently mixed before use.

Note For laboratory research only, not for drug, diagnostic or other use.

Bioinformation

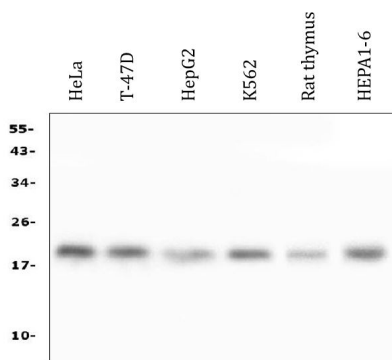
Gene Symbol	RMI2
Gene Full Name	RecQ mediated genome instability 2
Background	RMI2 is a component of the BLM (RECQL3; MIM 604610) complex, which plays a role in homologous recombination-dependent DNA repair and is essential for genome stability (Xu et al., 2008 [PubMed 18923082]).[supplied by OMIM, Nov 2008]
Function	Essential component of the RMI complex, a complex that plays an important role in the processing of homologous recombination intermediates. It is required to regulate sister chromatid segregation and to limit DNA crossover. Essential for the stability, localization, and function of BLM, TOP3A, and complexes containing BLM. In the RMI complex, it is required to target BLM to chromatin and stress-induced nuclear foci and mitotic phosphorylation of BLM. [UniProt]
Calculated Mw	16 kDa
PTM	Phosphorylated during mitosis. [UniProt]
Cellular Localization	Nucleus. Note=Colocalizes with BLM at nuclear DNA repair foci. [UniProt]

Images



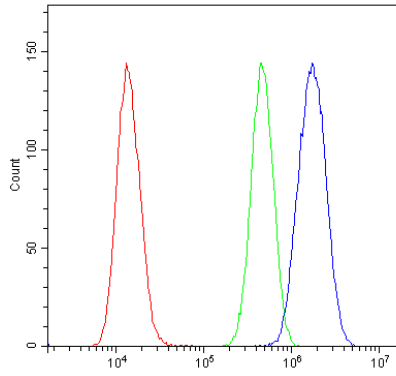
ARG42223 anti-RMI2 antibody IHC-P image

Immunohistochemistry: Paraffin-embedded Human intestinal cancer tissue. Antigen Retrieval: Heat mediation was performed in Citrate buffer (pH 6.0, epitope retrieval solution) for 20 min. The tissue section was blocked with 10% goat serum. The tissue section was then stained with ARG42223 anti-RMI2 antibody at 1 µg/ml dilution, overnight at 4°C.



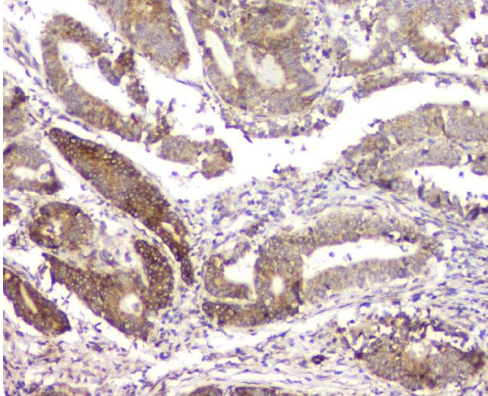
ARG42223 anti-RMI2 antibody WB image

Western blot: 50 µg of samples under reducing conditions. HeLa, T-47D, HepG2, K562, Rat thymus and Mouse HEP1-6 cell lysates stained with ARG42223 anti-RMI2 antibody at 0.5 µg/ml dilution, overnight at 4°C.



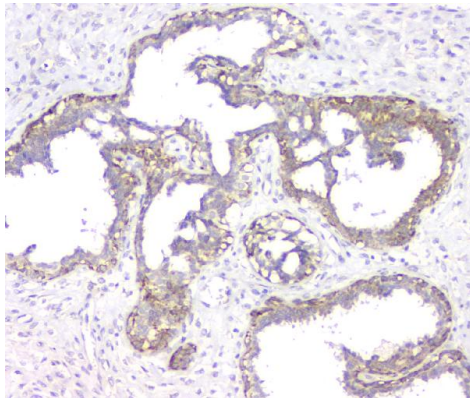
ARG42223 anti-RMI2 antibody FACS image

Flow Cytometry: U2OS cells were blocked with 10% normal goat serum and then stained with ARG42223 anti-RMI2 antibody (blue line) at $1 \mu\text{g}/10^6$ cells for 30 min at 20°C , followed by incubation with DyLight[®]488 labelled secondary antibody. Isotype control antibody (green line) was Rabbit IgG ($1 \mu\text{g}/10^6$ cells) used under the same conditions. Unlabelled sample (red line) was also used as a control.



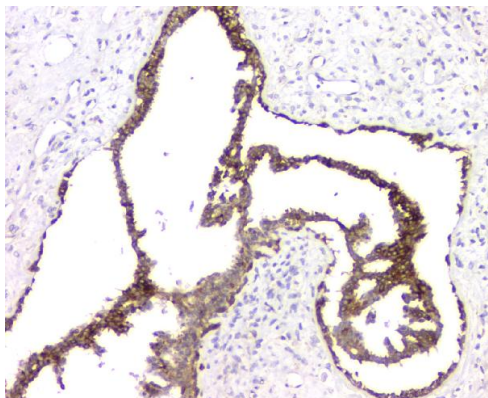
ARG42223 anti-RMI2 antibody IHC-P image

Immunohistochemistry: Paraffin-embedded Human intestinal cancer tissue. Antigen Retrieval: Heat mediation was performed in Citrate buffer (pH 6.0, epitope retrieval solution) for 20 min. The tissue section was blocked with 10% goat serum. The tissue section was then stained with ARG42223 anti-RMI2 antibody at $1 \mu\text{g}/\text{ml}$ dilution, overnight at 4°C .



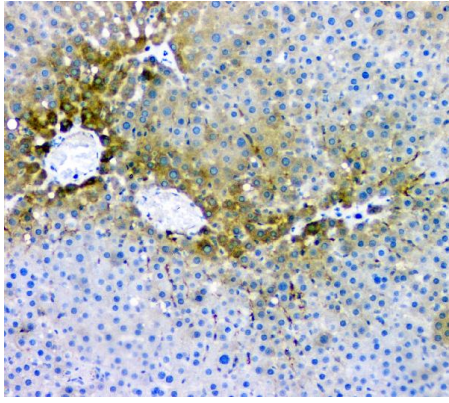
ARG42223 anti-RMI2 antibody IHC-P image

Immunohistochemistry: Paraffin-embedded Human mammary cancer tissue. Antigen Retrieval: Heat mediation was performed in Citrate buffer (pH 6.0, epitope retrieval solution) for 20 min. The tissue section was blocked with 10% goat serum. The tissue section was then stained with ARG42223 anti-RMI2 antibody at $1 \mu\text{g}/\text{ml}$ dilution, overnight at 4°C .



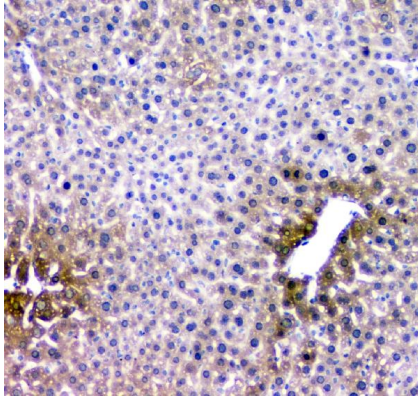
ARG42223 anti-RMI2 antibody IHC-P image

Immunohistochemistry: Paraffin-embedded Human mammary cancer tissue. Antigen Retrieval: Heat mediation was performed in Citrate buffer (pH 6.0, epitope retrieval solution) for 20 min. The tissue section was blocked with 10% goat serum. The tissue section was then stained with ARG42223 anti-RMI2 antibody at $1 \mu\text{g}/\text{ml}$ dilution, overnight at 4°C .



ARG42223 anti-RMI2 antibody IHC-P image

Immunohistochemistry: Paraffin-embedded Rat liver tissue. Antigen Retrieval: Heat mediation was performed in Citrate buffer (pH 6.0, epitope retrieval solution) for 20 min. The tissue section was blocked with 10% goat serum. The tissue section was then stained with ARG42223 anti-RMI2 antibody at 1 $\mu\text{g}/\text{ml}$ dilution, overnight at 4°C.



ARG42223 anti-RMI2 antibody IHC-P image

Immunohistochemistry: Paraffin-embedded Mouse liver tissues. Antigen Retrieval: Heat mediation was performed in Citrate buffer (pH 6.0, epitope retrieval solution) for 20 min. The tissue section was blocked with 10% goat serum. The tissue section was then stained with ARG42223 anti-RMI2 antibody at 1 $\mu\text{g}/\text{ml}$ dilution, overnight at 4°C.
