

## ARG42221 anti-NPTX1 / NP1 antibody

Package: 100 µl  
Store at: -20°C

### Summary

|                     |  |
|---------------------|--|
| Product Description | Rabbit Polyclonal antibody recognizes NPTX1 / NP1                          |
| Tested Reactivity   | Hu, Ms, Rat  |
| Tested Application  | IHC-P, WB  |
| Host                | Rabbit   |
| Clonality           | Polyclonal   |
| Isotype             | IgG  |
| Target Name         | NPTX1 / NP1  |
| Species             | Human  |
| Immunogen           | KLH-conjugated synthetic peptide between aa. 322-350 of Human NPTX1 / NP1. |
| Conjugation         | Un-conjugated  |
| Alternate Names     | Neuronal pentraxin-1; NP-I; NP1; Neuronal pentraxin I                      |

### Application Instructions

| Application table | Application  | Dilution |
|-------------------|--|----------|
|                   | IHC-P  | 1:25     |
|                   | WB   | 1:1000   |
| Application Note  | IHC-P: Antigen Retrieval: Heat mediation was performed in Citrate buffer (pH 6.0).<br>* The dilutions indicate recommended starting dilutions and the optimal dilutions or concentrations should be determined by the scientist. |          |
| Positive Control  | Human brain  |          |
| Observed Size     | ~ 50 kDa   |          |

### Properties

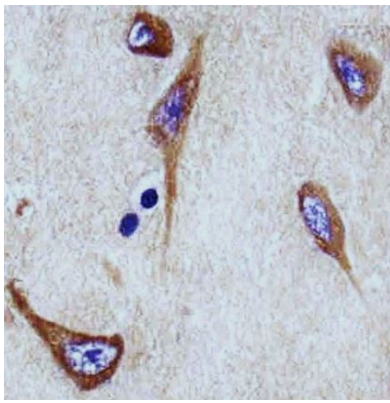
|                     |  |
|---------------------|--|
| Form                | Liquid   |
| Purification        | Purification with Protein A and immunogen peptide.   |
| Buffer              | PBS and 0.09% (W/V) Sodium azide.  |
| Preservative        | 0.09% (W/V) Sodium azide   |
| Storage instruction | For continuous use, store undiluted antibody at 2-8°C for up to a week. For long-term storage, aliquot and store at -20°C or below. Storage in frost free freezers is not recommended. Avoid repeated freeze/thaw cycles. Suggest spin the vial prior to opening. The antibody solution should be gently mixed before use. |
| Note                | For laboratory research only, not for drug, diagnostic or other use.   |

## Bioinformation

---

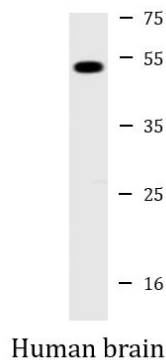
|                       |  |
|-----------------------|--|
| Gene Symbol           | NPTX1  |
| Gene Full Name        | neuronal pentraxin I   |
| Background            | NPTX1 is a member of the neuronal pentraxin gene family. Neuronal pentraxin 1 is similar to the rat NP1 gene which encodes a binding protein for the snake venom toxin taipoxin. Human NPTX1 mRNA is exclusively localized to the nervous system. [provided by RefSeq, Jul 2008] |
| Function              | May be involved in mediating uptake of synaptic material during synapse remodeling or in mediating the synaptic clustering of AMPA glutamate receptors at a subset of excitatory synapses. [UniProt]   |
| Calculated Mw         | 47 kDa   |
| Cellular Localization | Cytoplasmic vesicle, secretory vesicle. [UniProt]  |

## Images



ARG42221 anti-NPTX1 / NP1 antibody IHC-P image

Immunohistochemistry: Paraformaldehyde-fixed and paraffin-embedded Human brain tissue section. Tissue was blocked with 3% BSA for 0.5 hour at room temperature. Antigen Retrieval: Heat mediation was performed in Citrate buffer (pH 6.0). Samples were stained with ARG42221 anti-NPTX1 / NP1 antibody at 1:25 dilution for 1 hour at 37°C.



ARG42221 anti-NPTX1 / NP1 antibody WB image

Western blot: 20 µg of Human brain lysate stained with ARG42221 anti-NPTX1 / NP1 antibody at 1:2000 dilution.