

## ARG42215 anti-ADAM22 antibody

Package: 100 µl  
Store at: -20°C

### Summary

|                     |  |
|---------------------|--|
| Product Description | Rabbit Polyclonal antibody recognizes ADAM22   |
| Tested Reactivity   | Hu, Ms, Rat  |
| Tested Application  | WB   |
| Host                | Rabbit   |
| Clonality           | Polyclonal   |
| Isotype             | IgG  |
| Target Name         | ADAM22   |
| Species             | Human  |
| Immunogen           | Recombinant fusion protein corresponding to aa. 223-400 of Human ADAM22 (NP_004185.1).   |
| Conjugation         | Un-conjugated  |
| Alternate Names     | MDC2; Disintegrin and metalloproteinase domain-containing protein 22; ADAM 22; Metalloproteinase-like, disintegrin-like, and cysteine-rich protein 2; Metalloproteinase-disintegrin ADAM22-3 |

### Application Instructions

| Application table | Application  | Dilution        |
|-------------------|--|-----------------|
|                   | WB   | 1:1000 - 1:4000 |
| Application Note  | * The dilutions indicate recommended starting dilutions and the optimal dilutions or concentrations should be determined by the scientist. |                 |
| Positive Control  | Rat kidney   |                 |
| Observed Size     | ~ 100kDa   |                 |

### Properties

|                     |   |
|---------------------|---|
| Form                | Liquid  |
| Purification        | Affinity purified.  |
| Buffer              | PBS (pH 7.3), 0.02% Sodium azide and 50% Glycerol.  |
| Preservative        | 0.02% Sodium azide  |
| Stabilizer          | 50% Glycerol  |
| Storage instruction | For continuous use, store undiluted antibody at 2-8°C for up to a week. For long-term storage, aliquot and store at -20°C. Storage in frost free freezers is not recommended. Avoid repeated freeze/thaw cycles. Suggest spin the vial prior to opening. The antibody solution should be gently mixed before use. |
| Note                | For laboratory research only, not for drug, diagnostic or other use.  |

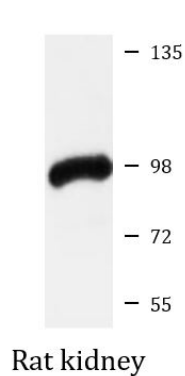
## Bioinformation

---

|                       |  |
|-----------------------|--|
| Gene Symbol           | ADAM22   |
| Gene Full Name        | ADAM metallopeptidase domain 22  |
| Background            | This gene encodes a member of the ADAM (a disintegrin and metalloprotease domain) family. Members of this family are membrane-anchored proteins structurally related to snake venom disintegrins, and have been implicated in a variety of biological processes involving cell-cell and cell-matrix interactions, including fertilization, muscle development, and neurogenesis. Unlike other members of the ADAM protein family, the protein encoded by this gene lacks metalloprotease activity since it has no zinc-binding motif. This gene is highly expressed in the brain and may function as an integrin ligand in the brain. In mice, it has been shown to be essential for correct myelination in the peripheral nervous system. Alternative splicing results in several transcript variants. [provided by RefSeq, Dec 2010] |
| Function              | Probable ligand for integrin in the brain. This is a non catalytic metalloprotease-like protein (PubMed:19692335). Involved in regulation of cell adhesion and spreading and in inhibition of cell proliferation. Neuronal receptor for LGI1. [UniProt]  |
| Calculated Mw         | 100 kDa  |
| PTM                   | The precursor is cleaved by a furin endopeptidase. [UniProt]   |
| Cellular Localization | Membrane; Single-pass type I membrane protein. Cell projection, axon. [UniProt]  |

## Images

---



ARG42215 anti-ADAM22 antibody WB image

Western blot: 25 µg of Rat kidney lysate stained with ARG42215 anti-ADAM22 antibody at 1:1000 dilution.