

ARG42210 anti-GLIS3 antibody

Package: 50 µl
Store at: -20°C

Summary

Product Description	Rabbit Polyclonal antibody recognizes GLIS3
Tested Reactivity	Hu
Tested Application	IHC-P
Host	Rabbit
Clonality	Polyclonal
Isotype	IgG
Target Name	GLIS3
Species	Human
Immunogen	Synthetic peptide around the N-terminal region of Human GLIS3. (within the following region: PPASQ VSTAC NQISP SLQRA MNAAN LNIPP SDTRS LISRE SLAST TLSLT)
Conjugation	Un-conjugated
Alternate Names	GLI-similar 3; Zinc finger protein GLIS3; Zinc finger protein 515; ZNF515

Application Instructions

Application table	Application	Dilution
	IHC-P	1:10
Application Note	* The dilutions indicate recommended starting dilutions and the optimal dilutions or concentrations should be determined by the scientist.	

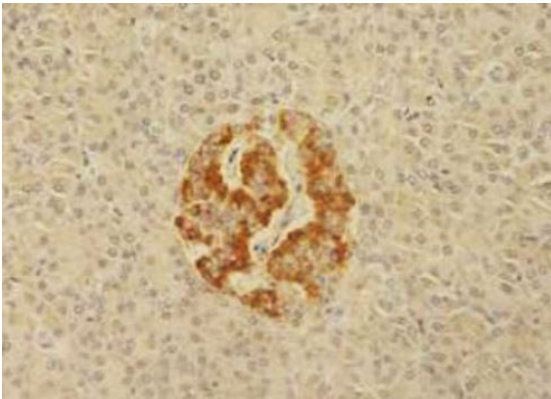
Properties

Form	Liquid
Purification	Purification with Protein A.
Buffer	PBS, 0.09% (w/v) Sodium azide and 2% Sucrose.
Preservative	0.09% (w/v) Sodium azide
Stabilizer	2% Sucrose
Concentration	Batch dependent: 0.5 - 1 mg/ml
Storage instruction	For continuous use, store undiluted antibody at 2-8°C for up to a week. For long-term storage, aliquot and store at -20°C or below. Storage in frost free freezers is not recommended. Avoid repeated freeze/thaw cycles. Suggest spin the vial prior to opening. The antibody solution should be gently mixed before use.
Note	For laboratory research only, not for drug, diagnostic or other use.

Bioinformation

Gene Symbol	GLIS3
Gene Full Name	GLIS family zinc finger 3
Background	This gene is a member of the GLI-similar zinc finger protein family and encodes a nuclear protein with five C2H2-type zinc finger domains. This protein functions as both a repressor and activator of transcription and is specifically involved in the development of pancreatic beta cells, the thyroid, eye, liver and kidney. Mutations in this gene have been associated with neonatal diabetes and congenital hypothyroidism (NDH). Alternatively spliced variants that encode different protein isoforms have been described but the full-length nature of only two have been determined. [provided by RefSeq, Jul 2008]
Function	Acts as both a repressor and activator of transcription. Binds to the consensus sequence 5'-GACCACCCAC-3' (By similarity). [UniProt]
Calculated Mw	84 kDa
Cellular Localization	Nucleus. [UniProt]

Images



ARG42210 anti-GLIS3 antibody IHC-P image

Immunohistochemistry: Paraffin-embedded Human pancreas tissue stained with ARG42210 anti-GLIS3 antibody at 1:10 dilution.