

## ARG42196 anti-PHF21A / BHC80 antibody

Package: 50 µg  
Store at: -20°C

### Summary

Product Description	Rabbit Polyclonal antibody recognizes PHF21A / BHC80
Tested Reactivity	Hu, Ms, Rat
Tested Application	FACS, IHC-P, WB
Host	Rabbit
Clonality	Polyclonal
Isotype	IgG
Target Name	PHF21A / BHC80
Species	Human
Immunogen	Recombinant protein corresponding to M1-Q97 of Human PHF21A / BHC80.
Conjugation	Un-conjugated
Alternate Names	PHD finger protein 21A; BM-006; BHC80a; BHC80; BRAF35-HDAC complex protein BHC80

### Application Instructions

Application table	Application	Dilution
	FACS	1:150 - 1:500
	IHC-P	1:200 - 1:1000
	WB	1:500 - 1:2000
Application Note	IHC-P: Antigen Retrieval: Heat mediation was performed in Citrate buffer (pH 6.0, epitope retrieval solution) for 20 min. * The dilutions indicate recommended starting dilutions and the optimal dilutions or concentrations should be determined by the scientist.	
Positive Control	A549, Rat brain and Mouse brain	
Observed Size	~ 95 kDa	

### Properties

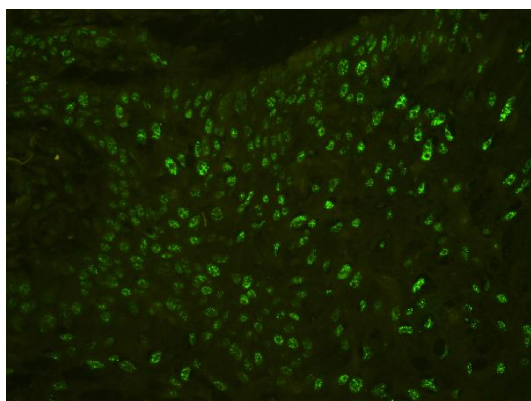
Form	Liquid
Purification	Affinity purification with immunogen.
Buffer	0.2% Na <sub>2</sub> HPO <sub>4</sub> , 0.9% NaCl, 0.05% Sodium azide and 4% Trehalose.
Preservative	0.05% Sodium azide
Stabilizer	4% Trehalose
Concentration	0.5 mg/ml

Storage instruction	For continuous use, store undiluted antibody at 2-8°C for up to a week. For long-term storage, aliquot and store at -20°C or below. Storage in frost free freezers is not recommended. Avoid repeated freeze/thaw cycles. Suggest spin the vial prior to opening. The antibody solution should be gently mixed before use.
Note	For laboratory research only, not for drug, diagnostic or other use.

## Bioinformation

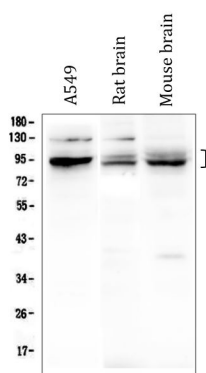
Gene Symbol	PHF21A
Gene Full Name	PHD finger protein 21A
Background	The PHF21A gene encodes BHC80, a component of a BRAF35 (MIM 605535)/histone deacetylase (HDAC; see MIM 601241) complex (BHC) that mediates repression of neuron-specific genes through the cis-regulatory element known as repressor element-1 (RE1) or neural restrictive silencer (NRS) (Hakimi et al., 2002 [PubMed 12032298]).[supplied by OMIM, Nov 2010]
Function	Component of the BHC complex, a corepressor complex that represses transcription of neuron-specific genes in non-neuronal cells. The BHC complex is recruited at RE1/NRSE sites by REST and acts by deacetylating and demethylating specific sites on histones, thereby acting as a chromatin modifier. In the BHC complex, it may act as a scaffold. Inhibits KDM1A-mediated demethylation of 'Lys-4' of histone H3 in vitro, suggesting a role in demethylation regulation. [UniProt]
Calculated Mw	75 kDa
Cellular Localization	Nucleus. [UniProt]

## Images



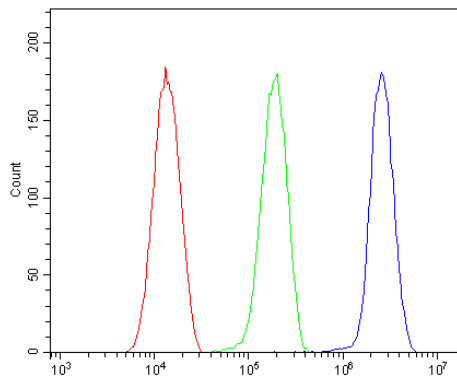
ARG42196 anti-PHF21A / BHC80 antibody IHC-P image

Immunohistochemistry: Paraffin-embedded Human oesophagus squama cancer tissues. Antigen Retrieval: Heat mediation was performed in Citrate buffer (pH 6.0, epitope retrieval solution) for 20 min. The tissue section was blocked with 10% goat serum. The tissue section was then stained with ARG42196 anti-PHF21A / BHC80 antibody at 1 µg/ml dilution, overnight at 4°C.



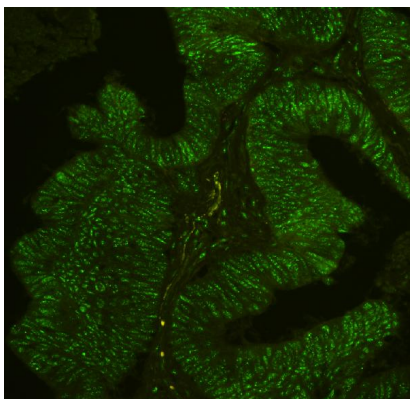
ARG42196 anti-PHF21A / BHC80 antibody WB image

Western blot: 50 µg of samples under reducing conditions. A549, Rat brain and Mouse brain lysates stained with ARG42196 anti-PHF21A / BHC80 antibody at 0.5 µg/ml dilution, overnight at 4°C.



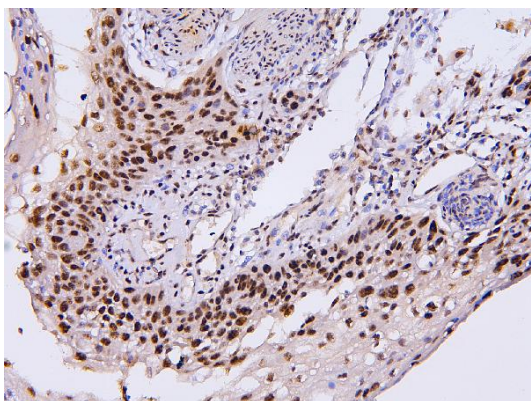
#### ARG42196 anti-PHF21A / BHC80 antibody FACS image

Flow Cytometry: HeLa cells were blocked with 10% normal goat serum and then stained with ARG42196 anti-PHF21A / BHC80 antibody (blue line) at  $1 \mu\text{g}/10^6$  cells for 30 min at  $20^\circ\text{C}$ , followed by incubation with DyLight<sup>®</sup>488 labelled secondary antibody. Isotype control antibody (green line) was Rabbit IgG ( $1 \mu\text{g}/10^6$  cells) used under the same conditions. Unlabelled sample (red line) was also used as a control.



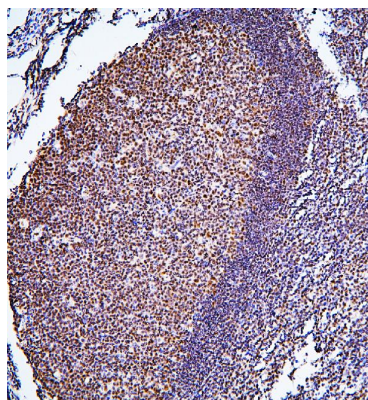
#### ARG42196 anti-PHF21A / BHC80 antibody IHC-P image

Immunohistochemistry: Paraffin-embedded Human intestinal cancer tissue. Antigen Retrieval: Heat mediation was performed in Citrate buffer (pH 6.0, epitope retrieval solution) for 20 min. The tissue section was blocked with 10% goat serum. The tissue section was then stained with ARG42196 anti-PHF21A / BHC80 antibody at  $1 \mu\text{g}/\text{ml}$  dilution, overnight at  $4^\circ\text{C}$ .



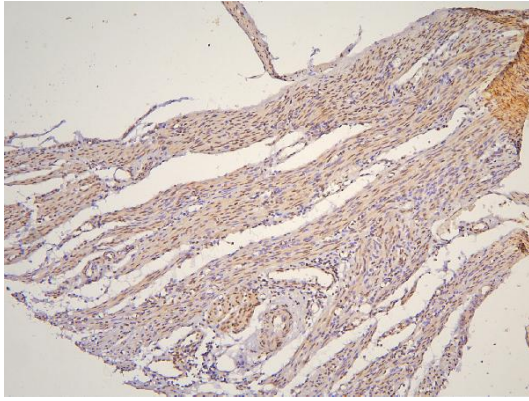
#### ARG42196 anti-PHF21A / BHC80 antibody IHC-P image

Immunohistochemistry: Paraffin-embedded Human oesophagus squama cancer tissue. Antigen Retrieval: Heat mediation was performed in Citrate buffer (pH 6.0, epitope retrieval solution) for 20 min. The tissue section was blocked with 10% goat serum. The tissue section was then stained with ARG42196 anti-PHF21A / BHC80 antibody at  $1 \mu\text{g}/\text{ml}$  dilution, overnight at  $4^\circ\text{C}$ .



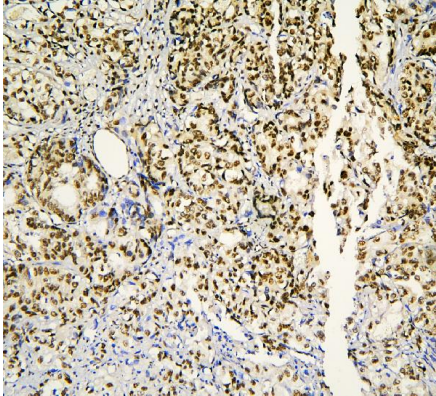
#### ARG42196 anti-PHF21A / BHC80 antibody IHC-P image

Immunohistochemistry: Paraffin-embedded Human tonsil tissue. Antigen Retrieval: Heat mediation was performed in Citrate buffer (pH 6.0, epitope retrieval solution) for 20 min. The tissue section was blocked with 10% goat serum. The tissue section was then stained with ARG42196 anti-PHF21A / BHC80 antibody at  $1 \mu\text{g}/\text{ml}$  dilution, overnight at  $4^\circ\text{C}$ .



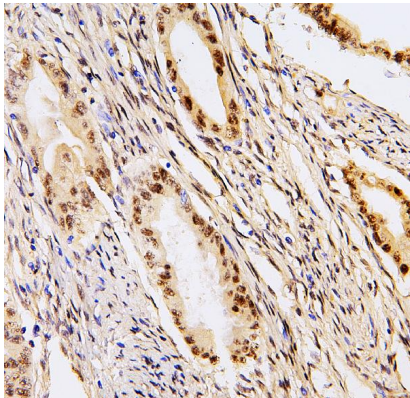
ARG42196 anti-PHF21A / BHC80 antibody IHC-P image

Immunohistochemistry: Paraffin-embedded Human endometrial carcinoma tissue. Antigen Retrieval: Heat mediation was performed in Citrate buffer (pH 6.0, epitope retrieval solution) for 20 min. The tissue section was blocked with 10% goat serum. The tissue section was then stained with ARG42196 anti-PHF21A / BHC80 antibody at 1  $\mu\text{g}/\text{ml}$  dilution, overnight at 4°C.



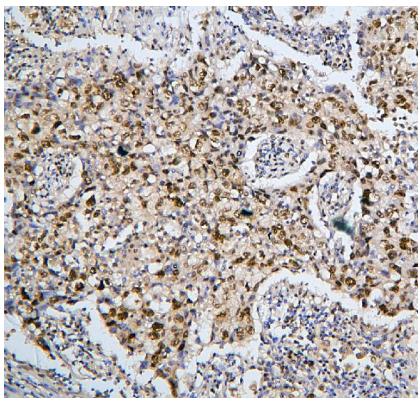
ARG42196 anti-PHF21A / BHC80 antibody IHC-P image

Immunohistochemistry: Paraffin-embedded Human gastric cancer tissue. Antigen Retrieval: Heat mediation was performed in Citrate buffer (pH 6.0, epitope retrieval solution) for 20 min. The tissue section was blocked with 10% goat serum. The tissue section was then stained with ARG42196 anti-PHF21A / BHC80 antibody at 1  $\mu\text{g}/\text{ml}$  dilution, overnight at 4°C.



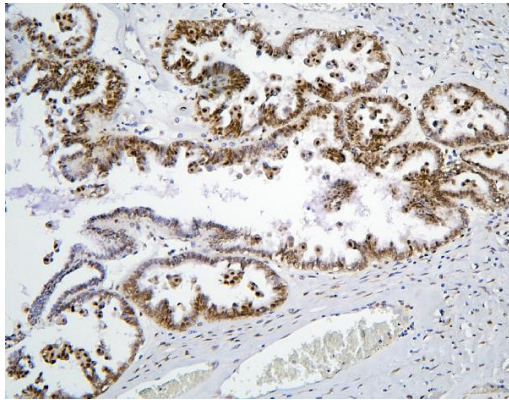
ARG42196 anti-PHF21A / BHC80 antibody IHC-P image

Immunohistochemistry: Paraffin-embedded Human intestinal cancer tissue. Antigen Retrieval: Heat mediation was performed in Citrate buffer (pH 6.0, epitope retrieval solution) for 20 min. The tissue section was blocked with 10% goat serum. The tissue section was then stained with ARG42196 anti-PHF21A / BHC80 antibody at 1  $\mu\text{g}/\text{ml}$  dilution, overnight at 4°C.



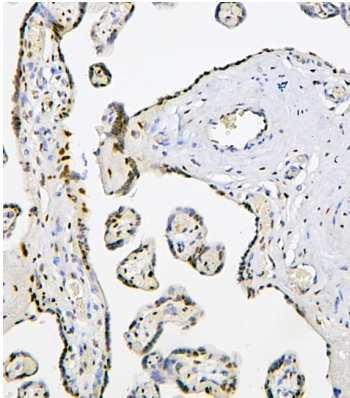
ARG42196 anti-PHF21A / BHC80 antibody IHC-P image

Immunohistochemistry: Paraffin-embedded Human lung cancer tissue. Antigen Retrieval: Heat mediation was performed in Citrate buffer (pH 6.0, epitope retrieval solution) for 20 min. The tissue section was blocked with 10% goat serum. The tissue section was then stained with ARG42196 anti-PHF21A / BHC80 antibody at 1  $\mu\text{g}/\text{ml}$  dilution, overnight at 4°C.



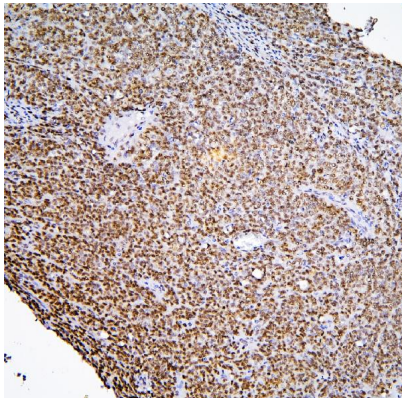
ARG42196 anti-PHF21A / BHC80 antibody IHC-P image

Immunohistochemistry: Paraffin-embedded Human ovarian cancer tissue. Antigen Retrieval: Heat mediation was performed in Citrate buffer (pH 6.0, epitope retrieval solution) for 20 min. The tissue section was blocked with 10% goat serum. The tissue section was then stained with ARG42196 anti-PHF21A / BHC80 antibody at 1  $\mu$ g/ml dilution, overnight at 4°C.



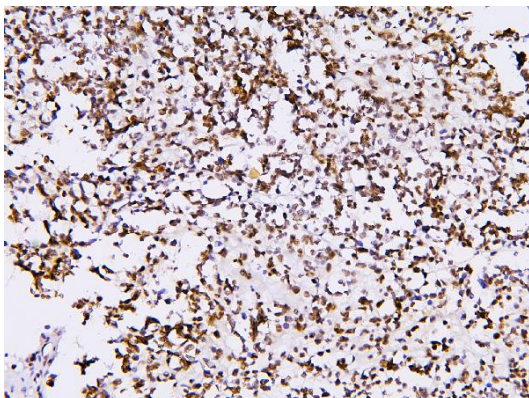
ARG42196 anti-PHF21A / BHC80 antibody IHC-P image

Immunohistochemistry: Paraffin-embedded Human placenta tissue. Antigen Retrieval: Heat mediation was performed in Citrate buffer (pH 6.0, epitope retrieval solution) for 20 min. The tissue section was blocked with 10% goat serum. The tissue section was then stained with ARG42196 anti-PHF21A / BHC80 antibody at 1  $\mu$ g/ml dilution, overnight at 4°C.



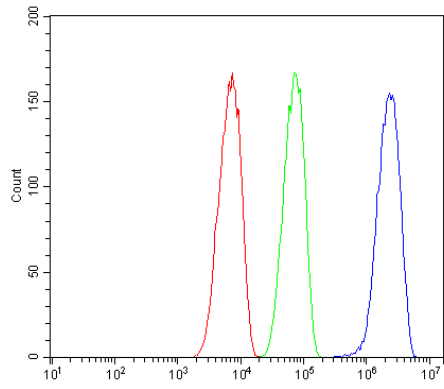
ARG42196 anti-PHF21A / BHC80 antibody IHC-P image

Immunohistochemistry: Paraffin-embedded Human sarcoma tissue. Antigen Retrieval: Heat mediation was performed in Citrate buffer (pH 6.0, epitope retrieval solution) for 20 min. The tissue section was blocked with 10% goat serum. The tissue section was then stained with ARG42196 anti-PHF21A / BHC80 antibody at 1  $\mu$ g/ml dilution, overnight at 4°C.



ARG42196 anti-PHF21A / BHC80 antibody IHC-P image

Immunohistochemistry: Paraffin-embedded Human glioma tissue. Antigen Retrieval: Heat mediation was performed in Citrate buffer (pH 6.0, epitope retrieval solution) for 20 min. The tissue section was blocked with 10% goat serum. The tissue section was then stained with ARG42196 anti-PHF21A / BHC80 antibody at 1  $\mu$ g/ml dilution, overnight at 4°C.



#### ARG42196 anti-PHF21A / BHC80 antibody FACS image

Flow Cytometry: SiHa cells were blocked with 10% normal goat serum and then stained with ARG42196 anti-PHF21A / BHC80 antibody (blue line) at 1  $\mu$ g/10<sup>6</sup> cells for 30 min at 20°C, followed by incubation with DyLight<sup>®</sup>488 labelled secondary antibody. Isotype control antibody (green line) was Rabbit IgG (1  $\mu$ g/10<sup>6</sup> cells) used under the same conditions. Unlabelled sample (red line) was also used as a control.