

ARG42194 anti-HLA C antibody

Package: 50 µg
Store at: -20°C

Summary

Product Description	Rabbit Polyclonal antibody recognizes HLA C
Tested Reactivity	Hu
Tested Application	FACS, ICC, IHC-P, WB
Host	Rabbit
Clonality	Polyclonal
Isotype	IgG
Target Name	HLA C
Species	Human
Immunogen	Synthetic peptide corresponding to aa. 38-62 of Human HLA C. (EYWDRETQKYKRQAQADRVNLRKLR)
Conjugation	Un-conjugated
Alternate Names	HLA-JY3; PSORS1; D6S204; MHC class I antigen Cw*7; HLC-C; HLA class I histocompatibility antigen, Cw-7 alpha chain

Application Instructions

Application table	Application	Dilution
	FACS	1:150 - 1:500
	ICC	1:200 - 1:1000
	IHC-P	1:200 - 1:1000
	WB	1:500 - 1:2000
Application Note	IHC-P: Antigen Retrieval: Heat mediation was performed in Citrate buffer (pH 6.0, epitope retrieval solution) for 20 min. * The dilutions indicate recommended starting dilutions and the optimal dilutions or concentrations should be determined by the scientist.	
Positive Control	HeLa, A549 and U87	
Observed Size	~ 41 kDa	

Properties

Form	Liquid
Purification	Affinity purification with immunogen.
Buffer	0.2% Na ₂ HPO ₄ , 0.9% NaCl, 0.05% Sodium azide and 5% BSA.
Preservative	0.05% Sodium azide
Stabilizer	5% BSA

Concentration	0.5 mg/ml
Storage instruction	For continuous use, store undiluted antibody at 2-8°C for up to a week. For long-term storage, aliquot and store at -20°C or below. Storage in frost free freezers is not recommended. Avoid repeated freeze/thaw cycles. Suggest spin the vial prior to opening. The antibody solution should be gently mixed before use.
Note	For laboratory research only, not for drug, diagnostic or other use.

Bioinformation

Gene Symbol	HLA-C
Gene Full Name	major histocompatibility complex, class I, C
Function	<p>Antigen-presenting major histocompatibility complex class I (MHCI) molecule with an important role in reproduction and antiviral immunity (PubMed:20972337, PubMed:24091323, PubMed:20439706, PubMed:11172028, PubMed:20104487, PubMed:28649982, PubMed:29312307). In complex with B2M/beta 2 microglobulin displays a restricted repertoire of self and viral peptides and acts as a dominant ligand for inhibitory and activating killer immunoglobulin receptors (KIRs) expressed on NK cells (PubMed:16141329). In an allogeneic setting, such as during pregnancy, mediates interaction of extravillous trophoblasts with KIR on uterine NK cells and regulate trophoblast invasion necessary for placentation and overall fetal growth (PubMed:20972337, PubMed:24091323). During viral infection, may present viral peptides with low affinity for KIRs, impeding KIR-mediated inhibition through peptide antagonism and favoring lysis of infected cells (PubMed:20439706). Presents a restricted repertoire of viral peptides on antigen-presenting cells for recognition by alpha-beta T cell receptor (TCR) on HLA-C-restricted CD8-positive T cells, guiding antigen-specific T cell immune response to eliminate infected cells, particularly in chronic viral infection settings such as HIV-1 or CMV infection (PubMed:11172028, PubMed:20104487, PubMed:28649982). Both the peptide and the MHC molecule are recognized by TCR, the peptide is responsible for the fine specificity of antigen recognition and MHC residues account for the MHC restriction of T cells (By similarity). Typically presents intracellular peptide antigens of 9 amino acids that arise from cytosolic proteolysis via proteasome. Can bind different peptides containing allele-specific binding motifs, which are mainly defined by anchor residues at position 2 and 9. Preferentially displays peptides having a restricted repertoire of hydrophobic or aromatic amino acids (Phe, Ile, Leu, Met, Val and Tyr) at the C-terminal anchor (PubMed:8265661, PubMed:25311805).</p> <p>ALLELE C*01:02: The peptide-bound form interacts with KIR2DL2 and KIR2DL3 inhibitory receptors on NK cells. The low affinity peptides compete with the high affinity peptides impeding KIR-mediated inhibition and favoring lysis of infected cells (PubMed:20439706). Presents to CD8-positive T cells a CMV epitope derived from UL83/pp65 (RCPEMISVL), an immediate-early antigen necessary for initiating viral replication (PubMed:12947002).</p> <p>ALLELE C*04:01: Presents a conserved HIV-1 epitope derived from env (SFNCGGEFF) to memory CD8-positive T cells, eliciting very strong IFNG responses (PubMed:20104487). Presents CMV epitope derived from UL83/pp65 (QYDPVAALF) to CD8-positive T cells, triggering T cell cytotoxic response (PubMed:12947002).</p> <p>ALLELE C*05:01: Presents HIV-1 epitope derived from rev (SAEPVPLQL) to CD8-positive T cells, triggering T cell cytotoxic response.</p> <p>ALLELE C*06:02: In trophoblasts, interacts with KIR2DS2 on uterine NK cells and triggers NK cell activation, including secretion of cytokines such as GMCSF that enhances trophoblast migration.</p> <p>ALLELE C*07:02: Plays an important role in the control of chronic CMV infection. Presents immunodominant CMV epitopes derived from IE1 (LSEFCRVL and CRVLCCYVL) and UL28 (FRCPRRFCF), both antigens synthesized during immediate-early period of viral replication. Elicits a strong anti-viral CD8-positive T cell immune response that increases markedly with age.</p> <p>ALLELE C*08:01: Presents viral epitopes derived from CMV UL83 (VVCAHELVC) and IAV M1 (GILGFVFTL), triggering CD8-positive T cell cytotoxic response.</p> <p>ALLELE C*12:02: Presents CMV epitope derived from UL83 (VAFTSHEHF) to CD8-positive T cells.</p> <p>ALLELE C*15:02: Presents CMV epitope derived from UL83 CC (VVCAHELVC) to CD8-positive T cells, triggering T cell cytotoxic response. [UniProt]</p>
Calculated Mw	41 kDa

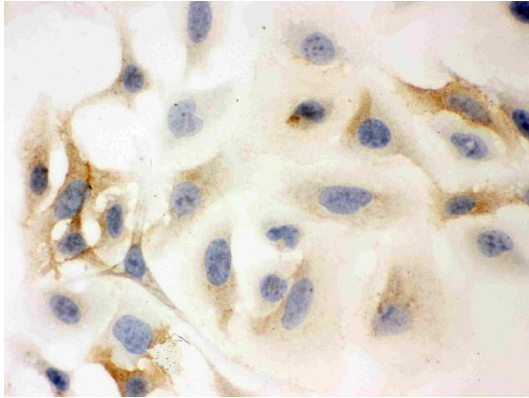
PTM

Polyubiquitinated in a post ER compartment by interaction with human herpesvirus 8 MIR1 protein. This targets the protein for rapid degradation via the ubiquitin system (By similarity). [UniProt]

Cellular Localization

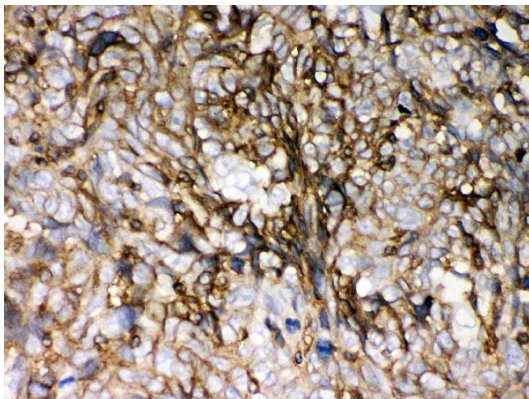
Membrane; Single-pass type I membrane protein. [UniProt]

Images



ARG42194 anti-HLA C antibody ICC image

Immunocytochemistry: HeLa cells stained with ARG42194 anti-HLA C antibody at 1 µg/ml dilution, overnight at 4°C.



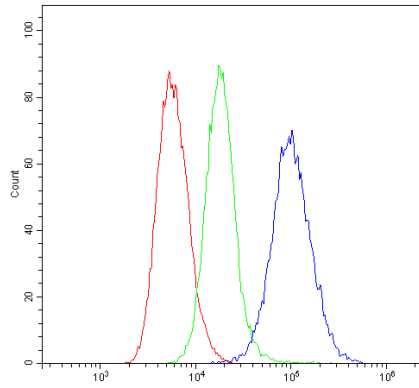
ARG42194 anti-HLA C antibody IHC-P image

Immunohistochemistry: Paraffin-embedded Human lung cancer tissue. Antigen Retrieval: Heat mediation was performed in Citrate buffer (pH 6.0, epitope retrieval solution) for 20 min. The tissue section was blocked with 10% goat serum. The tissue section was then stained with ARG42194 anti-HLA C antibody at 1 µg/ml dilution, overnight at 4°C.



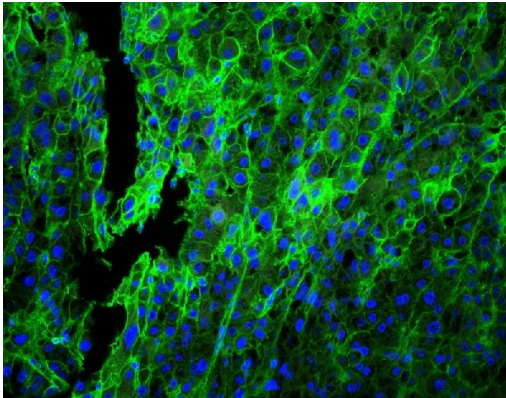
ARG42194 anti-HLA C antibody WB image

Western blot: 50 µg of samples under reducing conditions. HeLa, A549 and U87 whole cell lysates stained with ARG42194 anti-HLA C antibody at 0.5 µg/ml dilution, overnight at 4°C.



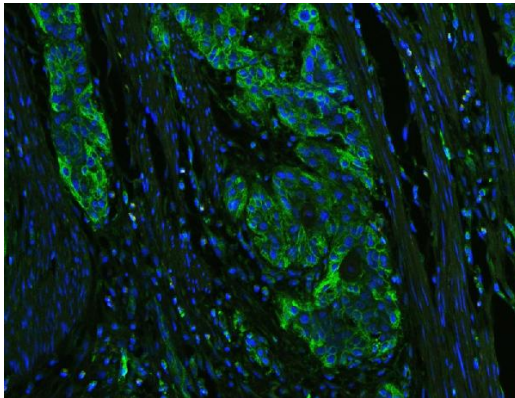
ARG42194 anti-HLA C antibody FACS image

Flow Cytometry: SiHa cells were blocked with 10% normal goat serum and then stained with ARG42194 anti-HLA C antibody (blue line) at $1 \mu\text{g}/10^6$ cells for 30 min at 20°C , followed by incubation with DyLight[®]488 labelled secondary antibody. Isotype control antibody (green line) was Rabbit IgG ($1 \mu\text{g}/10^6$ cells) used under the same conditions. Unlabelled sample (red line) was also used as a control.



ARG42194 anti-HLA C antibody IHC-P image

Immunohistochemistry: Paraffin-embedded Human lung cancer tissue. Antigen Retrieval: Heat mediation was performed in Citrate buffer (pH 6.0, epitope retrieval solution) for 20 min. The tissue section was blocked with 10% goat serum. The tissue section was then stained with ARG42194 anti-HLA C antibody at $1 \mu\text{g}/\text{ml}$ dilution, overnight at 4°C .



ARG42194 anti-HLA C antibody IHC-P image

Immunohistochemistry: Paraffin-embedded Human oesophagus squama cancer tissue. Antigen Retrieval: Heat mediation was performed in Citrate buffer (pH 6.0, epitope retrieval solution) for 20 min. The tissue section was blocked with 10% goat serum. The tissue section was then stained with ARG42194 anti-HLA C antibody at $1 \mu\text{g}/\text{ml}$ dilution, overnight at 4°C .