

ARG42193 anti-HLA A antibody

Package: 50 µg
Store at: -20°C

Summary

Product Description	Rabbit Polyclonal antibody recognizes HLA A
Tested Reactivity	Hu
Tested Application	ICC/IF, IHC-P, WB
Host	Rabbit
Clonality	Polyclonal
Isotype	IgG
Target Name	HLA A
Species	Human
Immunogen	Synthetic peptide corresponding to aa. 82-106 of Human HLA A. (EYWDGETRKKVKAHSQTHRVDLGLR)
Conjugation	Un-conjugated
Alternate Names	MHC class I antigen A*1; HLAA; HLA class I histocompatibility antigen, A-1 alpha chain

Application Instructions

Application table	Application	Dilution
	ICC/IF	1:200 - 1:1000
	IHC-P	1:200 - 1:1000
	WB	1:500 - 1:2000
Application Note	* The dilutions indicate recommended starting dilutions and the optimal dilutions or concentrations should be determined by the scientist.	
Positive Control	U87 and HepG2	
Observed Size	~ 41 kDa	

Properties

Form	Liquid
Purification	Affinity purification with immunogen.
Buffer	0.2% Na ₂ HPO ₄ , 0.9% NaCl, 0.05% Sodium azide and 5% BSA.
Preservative	0.05% Sodium azide
Stabilizer	5% BSA
Concentration	0.5 mg/ml
Storage instruction	For continuous use, store undiluted antibody at 2-8°C for up to a week. For long-term storage, aliquot and store at -20°C or below. Storage in frost free freezers is not recommended. Avoid repeated freeze/thaw cycles. Suggest spin the vial prior to opening. The antibody solution should be gently mixed

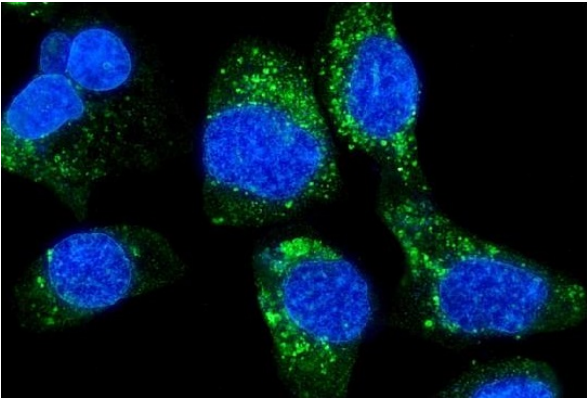
before use.

Note For laboratory research only, not for drug, diagnostic or other use.

Bioinformation

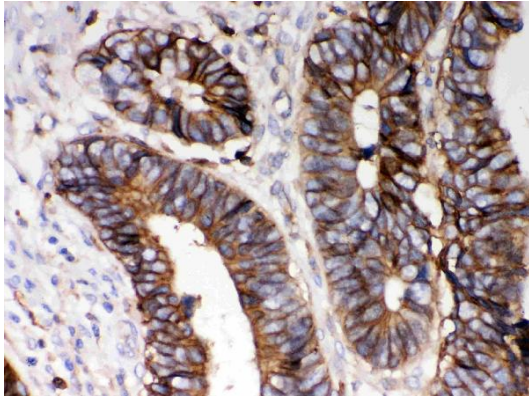
Gene Symbol	HLA-A
Gene Full Name	major histocompatibility complex, class I, A
Calculated Mw	41 kDa
PTM	Polyubiquitinated in a post ER compartment by interaction with human herpesvirus 8 MIR1 protein. This targets the protein for rapid degradation via the ubiquitin system (By similarity). [UniProt]
Cellular Localization	Membrane; Single-pass type I membrane protein. [UniProt]

Images



ARG42193 anti-HLA A antibody ICC/IF image

Immunofluorescence: A431 cells were blocked with 10% goat serum and then stained with ARG42193 anti-HLA A antibody (green) at 5 $\mu\text{g}/\text{ml}$ dilution, overnight at 4°C. DAPI (blue) for nuclear staining.



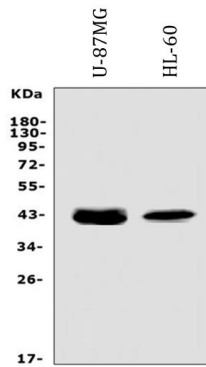
ARG42193 anti-HLA A antibody IHC-P image

Immunohistochemistry: Paraffin-embedded Human intestinal cancer tissue stained with ARG42193 anti-HLA A antibody.



ARG42193 anti-HLA A antibody WB image

Western blot: 40 µg of U87 and HepG2 whole cell lysates stained with ARG42193 anti-HLA A antibody at 0.5 µg/ml dilution.



ARG42193 anti-HLA A antibody WB image

Western blot: 50 µg of sample under reducing conditions. U-87MG and HL-60 whole cell lysates stained with ARG42193 anti-HLA A antibody at 0.5 µg/ml dilution, overnight at 4°C.