

ARG42183 anti-MLC1 antibody

Package: 50 µg
Store at: -20°C

Summary

Product Description	Goat Polyclonal antibody recognizes MLC1
Tested Reactivity	Hu
Tested Application	IHC-P
Host	Goat
Clonality	Polyclonal
Isotype	IgG
Target Name	MLC1
Species	Human
Immunogen	Synthetic peptide around the internal region of Human MLC1. (C-SDSANILDEVPPAR) (NP_055981.1)
Conjugation	Un-conjugated
Alternate Names	LVM; MLC; VL; Membrane protein MLC1

Application Instructions

Application table	Application	Dilution
	IHC-P	5 µg/ml

Application Note IHC-P: Antigen Retrieval: Steam tissue section in Citrate buffer (pH 6.0).
* The dilutions indicate recommended starting dilutions and the optimal dilutions or concentrations should be determined by the scientist.

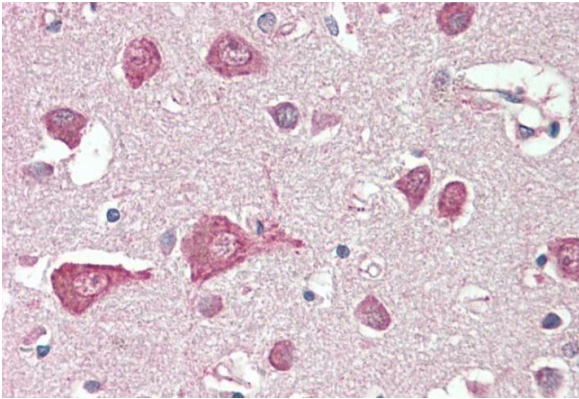
Properties

Form	Liquid
Purification	Ammonium sulphate precipitation followed by affinity purification with immunogen.
Buffer	Tris saline (pH 7.3), 0.02% Sodium azide and 0.5% BSA.
Preservative	0.02% Sodium azide
Stabilizer	0.5% BSA
Concentration	0.5 mg/ml
Storage instruction	For continuous use, store undiluted antibody at 2-8°C for up to a week. For long-term storage, aliquot and store at -20°C or below. Storage in frost free freezers is not recommended. Avoid repeated freeze/thaw cycles. Suggest spin the vial prior to opening. The antibody solution should be gently mixed before use.
Note	For laboratory research only, not for drug, diagnostic or other use.

Bioinformation

Gene Symbol	MLC1
Gene Full Name	megalencephalic leukoencephalopathy with subcortical cysts 1
Background	The function of this gene product is unknown; however, homology to other proteins suggests that it may be an integral membrane transporter. Mutations in this gene have been associated with megalencephalic leukoencephalopathy with subcortical cysts, an autosomal recessive neurological disorder. Alternatively spliced transcript variants encoding different isoforms have been identified. [provided by RefSeq, Jul 2008]
Function	Regulates the response of astrocytes to hypo-osmosis by promoting calcium influx. [UniProt]
Calculated Mw	41 kDa
Cellular Localization	Membrane; Multi-pass membrane protein. Cell membrane. Cytoplasm, perinuclear region. Endoplasmic reticulum. [UniProt]

Images



ARG42183 anti-MLC1 antibody IHC-P image

Immunohistochemistry: Paraffin-embedded Human cortex tissue. Antigen Retrieval: Steam tissue section in Citrate buffer (pH 6.0). The tissue section was stained with ARG42183 anti-MLC1 antibody at 5 µg/ml dilution followed by AP-staining.