

## ARG42168 anti-MOBKL3 antibody

Package: 100 µl  
Store at: -20°C

### Summary

Product Description	Rabbit Polyclonal antibody recognizes MOBKL3
Tested Reactivity	Hu
Tested Application	WB
Host	Rabbit
Clonality	Polyclonal
Isotype	IgG
Target Name	MOBKL3
Species	Human
Immunogen	KLH-conjugated synthetic peptide between aa. 1-30 of Human MOBKL3.
Conjugation	Un-conjugated
Alternate Names	Preimplantation protein 3; 2C4D; Mob3; PHOCN; CGI-95; Mps one binder kinase activator-like 3; PREI3; MOB-like protein phocein; MOB3; Class II mMOB1; MOB1; MOBKL3; Mob1 homolog 3

### Application Instructions

Application table	Application	Dilution
	WB	1:1000
Application Note	* The dilutions indicate recommended starting dilutions and the optimal dilutions or concentrations should be determined by the scientist.	
Positive Control	NCI-H460	
Observed Size	~ 26 kDa	

### Properties

Form	Liquid
Purification	Purification with Protein A and immunogen peptide.
Buffer	PBS and 0.09% (W/V) Sodium azide.
Preservative	0.09% (W/V) Sodium azide
Storage instruction	For continuous use, store undiluted antibody at 2-8°C for up to a week. For long-term storage, aliquot and store at -20°C or below. Storage in frost free freezers is not recommended. Avoid repeated freeze/thaw cycles. Suggest spin the vial prior to opening. The antibody solution should be gently mixed before use.
Note	For laboratory research only, not for drug, diagnostic or other use.

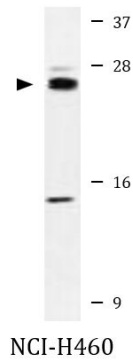
## Bioinformation

---

Gene Symbol	MOB4
Gene Full Name	MOB family member 4, phocein
Background	This gene was identified based on its similarity with the mouse counterpart. Studies of the mouse counterpart suggest that the expression of this gene may be regulated during oocyte maturation and preimplantation following zygotic gene activation. Alternatively spliced transcript variants encoding distinct isoforms have been observed. Naturally occurring read-through transcription occurs between this locus and the neighboring locus HSPE1. [provided by RefSeq, Feb 2011]
Function	May play a role in membrane trafficking, specifically in membrane budding reactions. [UniProt]
Calculated Mw	26 kDa
PTM	Phosphorylated on serine residues. [UniProt]
Cellular Localization	Cytoplasm, perinuclear region. Membrane; Peripheral membrane protein. Golgi apparatus, Golgi stack membrane; Peripheral membrane protein. Note=In a perinuclear punctate pattern. Associated with membranes and the Golgi stacks. [UniProt]

## Images

---



ARG42168 anti-MOBKL3 antibody WB image

Western blot: 35 µg of NCI-H460 cell lysate stained with ARG42168 anti-MOBKL3 antibody.