

## ARG42163 anti-YIPF3 antibody

Package: 100 µl  
Store at: -20°C

### Summary

Product Description	Rabbit Polyclonal antibody recognizes YIPF3
Tested Reactivity	Ms
Tested Application	WB
Host	Rabbit
Clonality	Polyclonal
Isotype	IgG
Target Name	YIPF3
Species	Human
Immunogen	KLH-conjugated synthetic peptide between aa. 292-321 of Human YIPF3.
Conjugation	Un-conjugated
Alternate Names	Natural killer cell-specific antigen KLIP1; C6orf109; Protein YIPF3; YIP1 family member 3; FinGER3; dJ337H4.3; Killer lineage protein 1; KLIP1

### Application Instructions

Application table	Application	Dilution
	WB	1:1000
Application Note	* The dilutions indicate recommended starting dilutions and the optimal dilutions or concentrations should be determined by the scientist.	
Positive Control	Mouse liver	
Observed Size	~ 34 kDa	

### Properties

Form	Liquid
Purification	Purification with Protein A and immunogen peptide.
Buffer	PBS and 0.09% (W/V) Sodium azide.
Preservative	0.09% (W/V) Sodium azide
Storage instruction	For continuous use, store undiluted antibody at 2-8°C for up to a week. For long-term storage, aliquot and store at -20°C or below. Storage in frost free freezers is not recommended. Avoid repeated freeze/thaw cycles. Suggest spin the vial prior to opening. The antibody solution should be gently mixed before use.
Note	For laboratory research only, not for drug, diagnostic or other use.

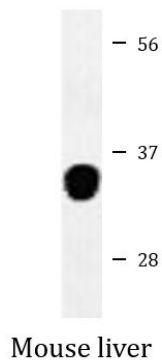
## Bioinformation

---

Gene Symbol	YIPF3
Gene Full Name	Yip1 domain family, member 3
Function	Involved in the maintenance of the Golgi structure. May play a role in hematopoiesis. [UniProt]
Calculated Mw	38 kDa
PTM	N-glycosylated in the ER (40 kDa form I), then O-glycosylated in the Golgi apparatus (46 kDa form II), the C-terminal luminal region is later removed in the Golgi apparatus to produce a 36 kDa form III. O-glycosylated with core 1-like and core 2-like glycans. O-glycan heterogeneity at Thr-346: HexNAc (minor), HexHexNAc (major), Hex1HexNAc2 (minor), Hex2HexNAc2 (minor) and dHex1Hex2HexNAc2 (minor). [UniProt]
Cellular Localization	Cell membrane; Multi-pass membrane protein. Cytoplasm. Golgi apparatus, cis-Golgi network membrane; Multi-pass membrane protein. Note=Localization to the cytoplasm or to the cell membrane is developmentally and ontogenetically regulated. [UniProt]

## Images

---



ARG42163 anti-YIPF3 antibody WB image

Western blot: 35 µg of Mouse liver lysate stained with ARG42163 anti-YIPF3 antibody.