

## ARG42155 anti-IFI27L2 / FAM14A antibody

Package: 50 µl  
Store at: -20°C

### Summary

Product Description	Rabbit Polyclonal antibody recognizes IFI27L2 / FAM14A
Tested Reactivity	Hu
Predict Reactivity	Cow
Tested Application	WB
Host	Rabbit
Clonality	Polyclonal
Isotype	IgG
Target Name	IFI27L2 / FAM14A
Species	Human
Immunogen	Synthetic peptide around the middle region of Human IFI27L2 / FAM14A. (within the following region: SVGSV LGACL GNSPS SSLPA EPEAK EDEAR ENVVQ GEPPK PPLKS EKHEE)
Conjugation	Un-conjugated
Alternate Names	b; ISG12B; pIFI27-like protein; Interferon alpha-inducible protein 27-like protein 2; TLH29; ISG12; Protein TLH29; Interferon-stimulated gene 12b protein; FAM14A

### Application Instructions

Predict Reactivity Note	Predicted Homology Based on Immunogen Sequence: Cow: 77%				
Application table	<table><thead><tr><th>Application</th><th>Dilution</th></tr></thead><tbody><tr><td>WB</td><td>0.2 - 1 µg/ml</td></tr></tbody></table>	Application	Dilution	WB	0.2 - 1 µg/ml
Application	Dilution				
WB	0.2 - 1 µg/ml				
Application Note	* The dilutions indicate recommended starting dilutions and the optimal dilutions or concentrations should be determined by the scientist.				
Positive Control	Jurkat				
Observed Size	~ 15 kDa				

### Properties

Form	Liquid
Purification	Affinity purified.
Buffer	PBS, 0.09% (w/v) Sodium azide and 2% Sucrose.
Preservative	0.09% (w/v) Sodium azide
Stabilizer	2% Sucrose
Concentration	Batch dependent: 0.5 - 1 mg/ml

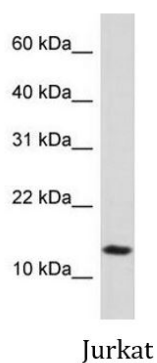
Storage instruction	For continuous use, store undiluted antibody at 2-8°C for up to a week. For long-term storage, aliquot and store at -20°C or below. Storage in frost free freezers is not recommended. Avoid repeated freeze/thaw cycles. Suggest spin the vial prior to opening. The antibody solution should be gently mixed before use.
Note	For laboratory research only, not for drug, diagnostic or other use.

## Bioinformation

---

Gene Symbol	IFI27L2
Gene Full Name	interferon, alpha-inducible protein 27-like 2
Function	Plays a role in the apoptotic process and has a pro-apoptotic activity. [UniProt]
Calculated Mw	12 kDa
Cellular Localization	Membrane; Single-pass type I membrane protein. [UniProt]

## Images



ARG42155 anti-IFI27L2 / FAM14A antibody WB image

Western blot: Jurkat cell lysate stained with ARG42155 anti-IFI27L2 / FAM14A antibody at 0.2 - 1 µg/ml dilution.