

## ARG42140 anti-EHD1 antibody

Package: 50 µg  
Store at: -20°C

### Summary

Product Description	Goat Polyclonal antibody recognizes EHD1
Tested Reactivity	Hu, Ms
Predict Reactivity	Cow, Rat
Tested Application	FACS, ICC/IF, IHC-P, WB
Host	Goat
Clonality	Polyclonal
Isotype	IgG
Target Name	EHD1
Species	Human
Immunogen	Synthetic peptide around the N-terminus of Human EHD1. (FSWVSKDARRKKEPC) (NP_001269373.1; NP_001269374.1)
Conjugation	Un-conjugated
Alternate Names	EH domain-containing protein 1; HPAST1; PAST1; Testilin; PAST; hPAST1; H-PAST; PAST homolog 1

### Application Instructions

Application table	Application	Dilution
	FACS	10 µg/ml
	ICC/IF	10 µg/ml
	IHC-P	3 - 5 µg/ml
	WB	0.03 - 0.1 µg/ml
Application Note	WB: Recommend incubate at RT for 1h. IHC-P: Antigen Retrieval: Steam tissue section in Citrate buffer (pH 6.0). * The dilutions indicate recommended starting dilutions and the optimal dilutions or concentrations should be determined by the scientist.	
Positive Control	NIH/3T3	
Observed Size	~ 63 kDa	

### Properties

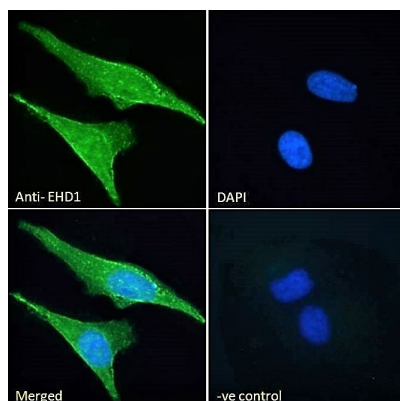
Form	Liquid
Purification	Ammonium sulphate precipitation followed by affinity purification with immunogen.
Buffer	Tris saline (pH 7.3), 0.02% Sodium azide and 0.5% BSA.
Preservative	0.02% Sodium azide

Stabilizer	0.5% BSA
Concentration	0.5 mg/ml
Storage instruction	For continuous use, store undiluted antibody at 2-8°C for up to a week. For long-term storage, aliquot and store at -20°C or below. Storage in frost free freezers is not recommended. Avoid repeated freeze/thaw cycles. Suggest spin the vial prior to opening. The antibody solution should be gently mixed before use.
Note	For laboratory research only, not for drug, diagnostic or other use.

## Bioinformation

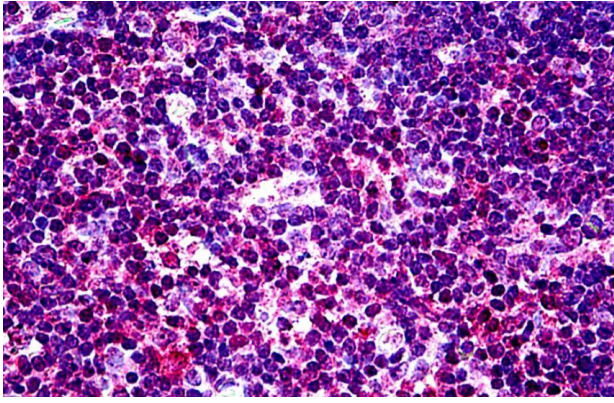
Gene Symbol	EHD1
Gene Full Name	EH-domain containing 1
Background	This gene belongs to a highly conserved gene family encoding EPS15 homology (EH) domain-containing proteins. The protein-binding EH domain was first noted in EPS15, a substrate for the epidermal growth factor receptor. The EH domain has been shown to be an important motif in proteins involved in protein-protein interactions and in intracellular sorting. The protein encoded by this gene is thought to play a role in the endocytosis of IGF1 receptors. Alternatively spliced transcript variants have been found for this gene. [provided by RefSeq, Sep 2013]
Function	ATP- and membrane-binding protein that controls membrane reorganization/tubulation upon ATP hydrolysis. In vitro causes vesiculation of endocytic membranes (PubMed:24019528). Acts in early endocytic membrane fusion and membrane trafficking of recycling endosomes (PubMed:15020713, PubMed:17233914, PubMed:20801876). Recruited to endosomal membranes upon nerve growth factor stimulation, indirectly regulates neurite outgrowth (By similarity). Plays a role in myoblast fusion (By similarity). Involved in the unidirectional retrograde dendritic transport of endocytosed BACE1 and in efficient sorting of BACE1 to axons implicating a function in neuronal APP processing (By similarity). Plays a role in the formation of the ciliary vesicle (CV), an early step in cilium biogenesis. Proposed to be required for the fusion of distal appendage vesicles (DAVs) to form the CV by recruiting SNARE complex component SNAP29. Is required for recruitment of transition zone proteins CEP290, RPGRI1L, TMEM67 and B9D2, and of IFT20 following DAV reorganization before Rab8-dependent ciliary membrane extension. Required for the loss of CCP110 from the mother centriole essential for the maturation of the basal body during ciliogenesis (PubMed:25686250). [UniProt]
Calculated Mw	61 kDa
Cellular Localization	Recycling endosome membrane; Peripheral membrane protein; Cytoplasmic side. Early endosome membrane; Peripheral membrane protein; Cytoplasmic side. Cell membrane; Peripheral membrane protein; Cytoplasmic side. Cell projection, cilium membrane; Peripheral membrane protein; Cytoplasmic side. [UniProt]

## Images



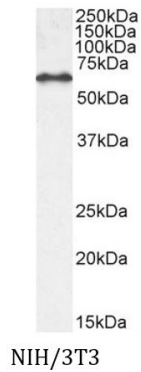
ARG42140 anti-EHD1 antibody ICC/IF image

Immunofluorescence: Paraformaldehyde fixed HeLa cells permeabilized with 0.15% Triton. Cells were stained with ARG42140 anti-EHD1 antibody (green) at 10 µg/ml dilution for 1 hour. DAPI (blue) for nuclear staining. Negative control: Unimmunized Goat IgG at 10 µg/ml dilution.



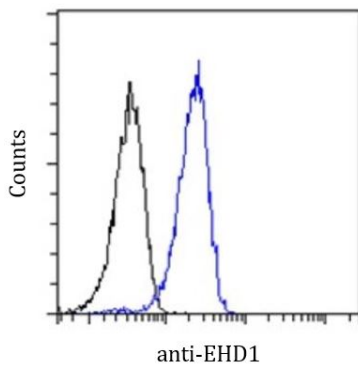
ARG42140 anti-EHD1 antibody IHC-P image

Immunohistochemistry: Paraffin-embedded Human thymus tissue. Antigen Retrieval: Steam tissue section in Citrate buffer (pH 6.0). The tissue section was stained with ARG42140 anti-EHD1 antibody at 3.75 µg/ml dilution followed by AP-staining.



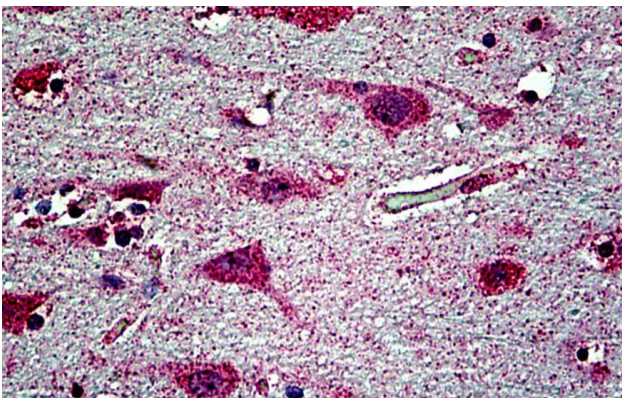
ARG42140 anti-EHD1 antibody WB image

Western blot: 35 µg of NIH/3T3 cell lysate (in RIPA buffer) stained with ARG42140 anti-EHD1 antibody at 0.1 µg/ml dilution and incubated at RT for 1 hour.



ARG42140 anti-EHD1 antibody FACS image

Flow Cytometry: Paraformaldehyde fixed HeLa cells permeabilized with 0.5% Triton. Cells were stained with ARG42140 anti-EHD1 antibody (blue line) at 10 µg/ml dilution for 1 hour, followed by incubation with Alexa Fluor® 488 labelled secondary antibody. IgG control: Unimmunized Goat IgG (black line) followed by Alexa Fluor® 488 secondary antibody.



ARG42140 anti-EHD1 antibody IHC-P image

Immunohistochemistry: Paraffin-embedded Human cortex tissue. Antigen Retrieval: Steam tissue section in Citrate buffer (pH 6.0). The tissue section was stained with ARG42140 anti-EHD1 antibody at 3.75 µg/ml dilution followed by AP-staining.