

## ARG42139 anti-EXOG / ENDOGL1 antibody

Package: 50 µg  
Store at: -20°C

### Summary

Product Description	Goat Polyclonal antibody recognizes EXOG / ENDOGL1
Tested Reactivity	Hu
Tested Application	IHC-P, WB
Host	Goat
Clonality	Polyclonal
Isotype	IgG
Target Name	EXOG / ENDOGL1
Species	Human
Immunogen	Synthetic peptide around the C-terminus of Human EXOG / ENDOGL1. (C-KAKEQSGTQIRKP) (NP_005098.2; NP_001138936.1)
Conjugation	Un-conjugated
Alternate Names	ENGL-a; ENGL-b; ENGLA; ENGLB; Nuclease EXOG, mitochondrial; ENDOGL2; ENDOGL1; Endonuclease G-like 1; ENGL; EC 3.1.30.-; Endo G-like 1

### Application Instructions

Application table	Application	Dilution
	IHC-P	5 µg/ml
	WB	0.1 - 0.3 µg/ml
Application Note	WB: Recommend incubate at RT for 1h. IHC-P: Antigen Retrieval: Steam tissue section in Citrate buffer (pH 6.0). * The dilutions indicate recommended starting dilutions and the optimal dilutions or concentrations should be determined by the scientist.	
Positive Control	HepG2 and Jurkat	
Observed Size	~ 40 kDa	

### Properties

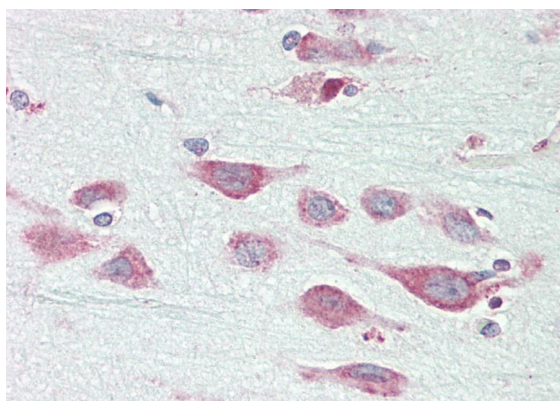
Form	Liquid
Purification	Ammonium sulphate precipitation followed by affinity purification with immunogen.
Buffer	Tris saline (pH 7.3), 0.02% Sodium azide and 0.5% BSA.
Preservative	0.02% Sodium azide
Stabilizer	0.5% BSA
Concentration	0.5 mg/ml

<b>Storage instruction</b>	For continuous use, store undiluted antibody at 2-8°C for up to a week. For long-term storage, aliquot and store at -20°C or below. Storage in frost free freezers is not recommended. Avoid repeated freeze/thaw cycles. Suggest spin the vial prior to opening. The antibody solution should be gently mixed before use.
<b>Note</b>	For laboratory research only, not for drug, diagnostic or other use.

## Bioinformation

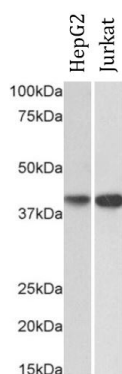
<b>Gene Symbol</b>	EXOG
<b>Gene Full Name</b>	endo/exonuclease (5'-3'), endonuclease G-like
<b>Background</b>	This gene encodes an endo/exonuclease with 5'-3' exonuclease activity. The encoded enzyme catalyzes the hydrolysis of ester linkages at the 5' end of a nucleic acid chain. This enzyme is localized to the mitochondria and may play a role in programmed cell death. Alternatively spliced transcript variants have been described. A pseudogene exists on chromosome 18. [provided by RefSeq, Feb 2009]
<b>Function</b>	Endo/exonuclease with nicking activity towards supercoiled DNA, a preference for single-stranded DNA and 5'-3' exonuclease activity. [UniProt]
<b>Calculated Mw</b>	41 kDa
<b>Cellular Localization</b>	Mitochondrion inner membrane. [UniProt]

## Images



ARG42139 anti-EXOG / ENDOGL1 antibody IHC-P image

Immunohistochemistry: Paraffin-embedded Human cortex tissue. Antigen Retrieval: Steam tissue section in Citrate buffer (pH 6.0). The tissue section was stained with ARG42139 anti-EXOG / ENDOGL1 antibody at 5 µg/ml dilution followed by AP-staining.



ARG42139 anti-EXOG / ENDOGL1 antibody WB image

Western blot: 35 µg of HepG2 and Jurkat cell lysates (in RIPA buffer) stained with ARG42139 anti-EXOG / ENDOGL1 antibody at 0.2 µg/ml dilution and incubated at RT for 1 hour.