

ARG42137 anti-eEF1E1 / AIMP3 antibody

Package: 50 µg
Store at: -20°C

Summary

Product Description	Goat Polyclonal antibody recognizes eEF1E1 / AIMP3
Tested Reactivity	Hu, Pig
Predict Reactivity	Cow, Dog
Tested Application	IHC-P, WB
Host	Goat
Clonality	Polyclonal
Isotype	IgG
Target Name	eEF1E1 / AIMP3
Species	Human
Immunogen	Synthetic peptide around the internal region of Human eEF1E1 / AIMP3. (C-SKGNKYSAQGERQ) (NP_004271.1; NP_001129122.1)
Conjugation	Un-conjugated
Alternate Names	Eukaryotic translation elongation factor 1 epsilon-1; Elongation factor p18; AIMP3; P18; Multisynthase complex auxiliary component p18; Aminoacyl tRNA synthetase complex-interacting multifunctional protein 3

Application Instructions

Application table	Application	Dilution
	IHC-P	5 µg/ml
	WB	0.1 - 0.3 µg/ml
Application Note	WB: Recommend incubate at RT for 1h. IHC-P: Antigen Retrieval: Steam tissue section in Citrate buffer (pH 6.0). * The dilutions indicate recommended starting dilutions and the optimal dilutions or concentrations should be determined by the scientist.	
Positive Control	K562 and Pig testis	
Observed Size	~ 20 kDa	

Properties

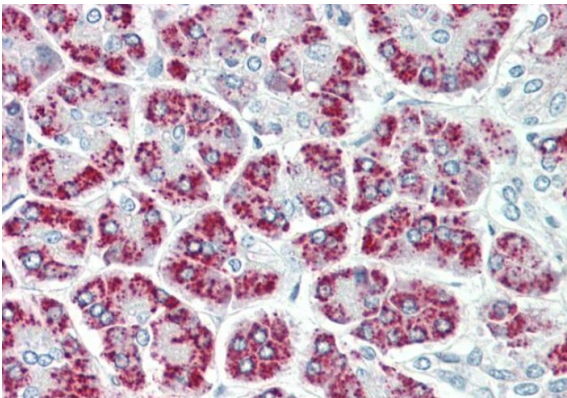
Form	Liquid
Purification	Ammonium sulphate precipitation followed by affinity purification with immunogen.
Buffer	Tris saline (pH 7.3), 0.02% Sodium azide and 0.5% BSA.
Preservative	0.02% Sodium azide
Stabilizer	0.5% BSA

Concentration	0.5 mg/ml
Storage instruction	For continuous use, store undiluted antibody at 2-8°C for up to a week. For long-term storage, aliquot and store at -20°C or below. Storage in frost free freezers is not recommended. Avoid repeated freeze/thaw cycles. Suggest spin the vial prior to opening. The antibody solution should be gently mixed before use.
Note	For laboratory research only, not for drug, diagnostic or other use.

Bioinformation

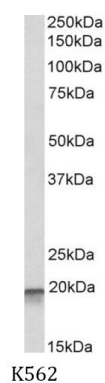
Gene Symbol	EEF1E1
Gene Full Name	eukaryotic translation elongation factor 1 epsilon 1
Background	This gene encodes a multifunctional protein that localizes to both the cytoplasm and nucleus. In the cytoplasm, the encoded protein is an auxiliary component of the macromolecular aminoacyl-tRNA synthase complex. However, its mouse homolog has been shown to translocate to the nucleus in response to DNA damage, and it plays a positive role in ATM/ATR-mediated p53 activation. Alternative splicing results in multiple transcript variants. Read-through transcription also exists between this gene and the neighboring downstream MUTED (muted homolog) gene. An EEF1E1-related pseudogene has been identified on chromosome 2. [provided by RefSeq, Dec 2010]
Function	Positive modulator of ATM response to DNA damage. [UniProt]
Calculated Mw	20 kDa
Cellular Localization	Cytoplasm. Cytoplasm, cytosol. Nucleus. Note=Cytoplasmic under growth arrest conditions. Translocated into the nucleus when growth resumes (S phase) and following DNA damage. [UniProt]

Images



ARG42137 anti-eEF1E1 / AIMP3 antibody IHC-P image

Immunohistochemistry: Paraffin-embedded Human pancreas tissue. Antigen Retrieval: Steam tissue section in Citrate buffer (pH 6.0). The tissue section was stained with ARG42137 anti-eEF1E1 / AIMP3 antibody at 5 µg/ml dilution followed by AP-staining.



ARG42137 anti-eEF1E1 / AIMP3 antibody WB image

Western blot: 35 µg of K562 cell lysate (in RIPA buffer) stained with ARG42137 anti-eEF1E1 / AIMP3 antibody at 0.1 µg/ml dilution and incubated at RT for 1 hour.

ARG42137 anti-eEF1E1 / AIMP3 antibody WB image

Western blot: 35 µg of Pig testis lysate (in RIPA buffer) stained with ARG42137 anti-eEF1E1 / AIMP3 antibody at 0.3 µg/ml dilution and incubated at RT for 1 hour.

