

ARG42134 anti-SH3GL2 antibody

Package: 50 µg
Store at: -20°C

Summary

Product Description	Goat Polyclonal antibody recognizes SH3GL2
Tested Reactivity	Hu
Predict Reactivity	Pig
Tested Application	IHC-P, WB
Host	Goat
Clonality	Polyclonal
Isotype	IgG
Target Name	SH3GL2
Species	Human
Immunogen	Synthetic peptide around the internal region of Human SH3GL2. (C-SLEFPTGDSTQPN) (NP_003017.1)
Conjugation	Un-conjugated
Alternate Names	SH3P4; SH3 domain-containing GRB2-like protein 2; EEN-B1; Endophilin-A1; CNSA2; Endophilin-1; SH3D2A; SH3 domain protein 2A

Application Instructions

Application table	Application	Dilution
	IHC-P	5 - 10 µg/ml
	WB	0.3 - 1 µg/ml
Application Note	WB: Recommend incubate at RT for 1h. IHC-P: Antigen Retrieval: Steam tissue section in Citrate buffer (pH 6.0). * The dilutions indicate recommended starting dilutions and the optimal dilutions or concentrations should be determined by the scientist.	
Positive Control	Human frontal cortex	
Observed Size	~ 40 kDa	

Properties

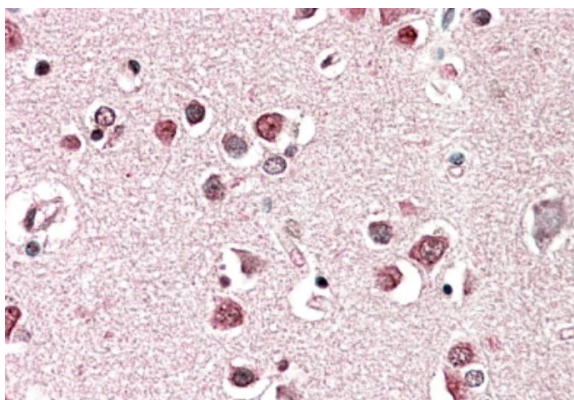
Form	Liquid
Purification	Ammonium sulphate precipitation followed by affinity purification with immunogen.
Buffer	Tris saline (pH 7.3), 0.02% Sodium azide and 0.5% BSA.
Preservative	0.02% Sodium azide
Stabilizer	0.5% BSA
Concentration	0.5 mg/ml

Storage instruction	For continuous use, store undiluted antibody at 2-8°C for up to a week. For long-term storage, aliquot and store at -20°C or below. Storage in frost free freezers is not recommended. Avoid repeated freeze/thaw cycles. Suggest spin the vial prior to opening. The antibody solution should be gently mixed before use.
Note	For laboratory research only, not for drug, diagnostic or other use.

Bioinformation

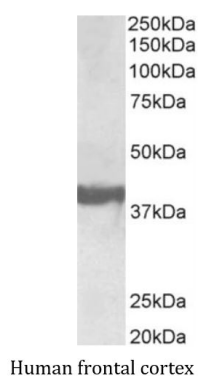
Gene Symbol	SH3GL2
Gene Full Name	SH3-domain GRB2-like 2
Function	Implicated in synaptic vesicle endocytosis. May recruit other proteins to membranes with high curvature. Required for BDNF-dependent dendrite outgrowth. Cooperates with SH3GL2 to mediate BDNF-NTRK2 early endocytic trafficking and signaling from early endosomes. [UniProt]
Calculated Mw	40 kDa
Cellular Localization	Cytoplasm. Membrane; Peripheral membrane protein. Early endosome. Note=Concentrated in presynaptic nerve terminals in neurons. [UniProt]

Images



ARG42134 anti-SH3GL2 antibody IHC-P image

Immunohistochemistry: Paraffin-embedded Human cerebral cortex tissue. Antigen Retrieval: Steam tissue section in Citrate buffer (pH 6.0). The tissue section was stained with ARG42134 anti-SH3GL2 antibody at 5 µg/ml dilution followed by AP-staining.



ARG42134 anti-SH3GL2 antibody WB image

Western blot: 35 µg of Human frontal cortex lysate (in RIPA buffer) stained with ARG42134 anti-SH3GL2 antibody at 0.3 µg/ml dilution and incubated at RT for 1 hour.