

ARG42122 anti-eEF1E1 / AIMP3 antibody

Package: 100 µl
Store at: -20°C

Summary

Product Description	Rabbit Polyclonal antibody recognizes eEF1E1 / AIMP3
Tested Reactivity	Hu, Ms, Rat
Tested Application	ICC/IF, WB
Host	Rabbit
Clonality	Polyclonal
Isotype	IgG
Target Name	eEF1E1 / AIMP3
Species	Human
Immunogen	Synthetic peptide within aa. 1-100 of Human eEF1E1 / AIMP3 (NP_004271.1).
Conjugation	Un-conjugated
Alternate Names	Eukaryotic translation elongation factor 1 epsilon-1; Elongation factor p18; AIMP3; P18; Multisynthase complex auxiliary component p18; Aminoacyl tRNA synthetase complex-interacting multifunctional protein 3

Application Instructions

Application table	Application	Dilution
	ICC/IF	1:50 - 1:200
	WB	1:200 - 1:2000
Application Note	* The dilutions indicate recommended starting dilutions and the optimal dilutions or concentrations should be determined by the scientist.	
Positive Control	293T	
Observed Size	~ 22 kDa	

Properties

Form	Liquid
Purification	Affinity purified.
Buffer	PBS (pH 7.3), 0.02% Sodium azide and 50% Glycerol.
Preservative	0.02% Sodium azide
Stabilizer	50% Glycerol
Storage instruction	For continuous use, store undiluted antibody at 2-8°C for up to a week. For long-term storage, aliquot and store at -20°C. Storage in frost free freezers is not recommended. Avoid repeated freeze/thaw cycles. Suggest spin the vial prior to opening. The antibody solution should be gently mixed before use.

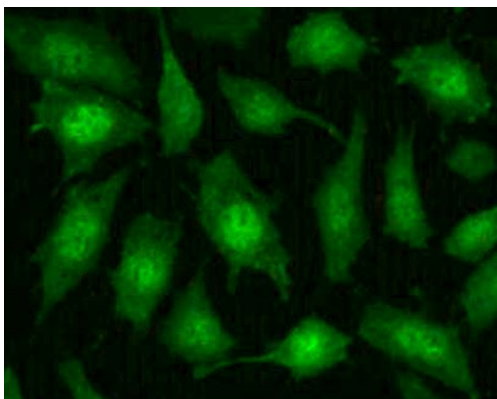
Note

For laboratory research only, not for drug, diagnostic or other use.

Bioinformation

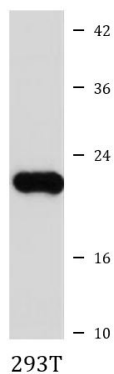
Gene Symbol	EEF1E1
Gene Full Name	eukaryotic translation elongation factor 1 epsilon 1
Background	This gene encodes a multifunctional protein that localizes to both the cytoplasm and nucleus. In the cytoplasm, the encoded protein is an auxiliary component of the macromolecular aminoacyl-tRNA synthase complex. However, its mouse homolog has been shown to translocate to the nucleus in response to DNA damage, and it plays a positive role in ATM/ATR-mediated p53 activation. Alternative splicing results in multiple transcript variants. Read-through transcription also exists between this gene and the neighboring downstream MUTED (muted homolog) gene. An EEF1E1-related pseudogene has been identified on chromosome 2. [provided by RefSeq, Dec 2010]
Function	Positive modulator of ATM response to DNA damage. [UniProt]
Calculated Mw	20 kDa
Cellular Localization	Cytoplasm. Cytoplasm, cytosol. Nucleus. Note=Cytoplasmic under growth arrest conditions. Translocated into the nucleus when growth resumes (S phase) and following DNA damage. [UniProt]

Images



ARG42122 anti-eEF1E1 / AIMP3 antibody ICC/IF image

Immunofluorescence: L929 cells stained with ARG42122 anti-eEF1E1 / AIMP3 antibody at 1:100 dilution.



ARG42122 anti-eEF1E1 / AIMP3 antibody WB image

Western blot: 25 µg of 293T cell lysate stained with ARG42122 anti-eEF1E1 / AIMP3 antibody at 1:1000 dilution.