

ARG42102 anti-BMP1 antibody

Package: 50 µg
Store at: -20°C

Summary

Product Description	Goat Polyclonal antibody recognizes BMP1
Tested Reactivity	Hu, Ms, Rat
Predict Reactivity	Cow, Dog, Pig
Tested Application	IHC-P, WB
Specificity	This antibody is expected to recognize both reported isoforms (NP_001190.1; NP_006120.1).
Host	Goat
Clonality	Polyclonal
Isotype	IgG
Target Name	BMP1
Species	Human
Immunogen	Synthetic peptide around the internal region of Human BMP1. (C-DTIVPKYEVNGVK) (NP_001190.1; NP_006120.1)
Conjugation	Un-conjugated
Alternate Names	OI13; Procollagen C-proteinase; PCP; PCOLC; PCP2; BMP-1; Bone morphogenetic protein 1; Mammalian tolloid protein; TLD; EC 3.4.24.19; mTld

Application Instructions

Application table	<table><thead><tr><th>Application</th><th>Dilution</th></tr></thead><tbody><tr><td>IHC-P</td><td>5 µg/ml</td></tr><tr><td>WB</td><td>1 - 3 µg/ml</td></tr></tbody></table>	Application	Dilution	IHC-P	5 µg/ml	WB	1 - 3 µg/ml
	Application	Dilution					
	IHC-P	5 µg/ml					
WB	1 - 3 µg/ml						
Application Note	WB: Recommend incubate at RT for 1h. IHC-P: Antigen Retrieval: Steam tissue section in Citrate buffer (pH 6.0). * The dilutions indicate recommended starting dilutions and the optimal dilutions or concentrations should be determined by the scientist.						
Observed Size	~ 110 kDa (Human)						

Properties

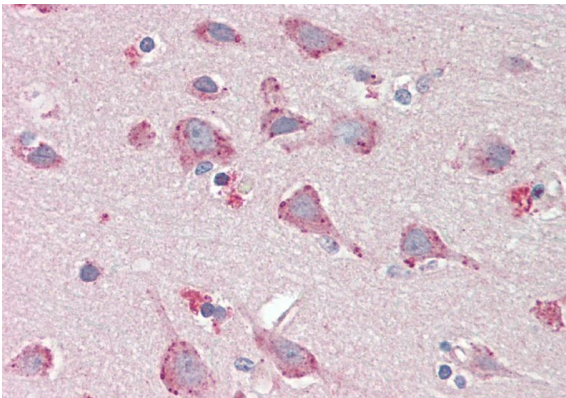
Form	Liquid
Purification	Ammonium sulphate precipitation followed by affinity purification with immunogen.
Buffer	Tris saline (pH 7.3), 0.02% Sodium azide and 0.5% BSA.
Preservative	0.02% Sodium azide
Stabilizer	0.5% BSA

Concentration	0.5 mg/ml
Storage instruction	For continuous use, store undiluted antibody at 2-8°C for up to a week. For long-term storage, aliquot and store at -20°C or below. Storage in frost free freezers is not recommended. Avoid repeated freeze/thaw cycles. Suggest spin the vial prior to opening. The antibody solution should be gently mixed before use.
Note	For laboratory research only, not for drug, diagnostic or other use.

Bioinformation

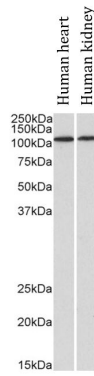
Gene Symbol	BMP1
Gene Full Name	bone morphogenetic protein 1
Background	This gene encodes a protein that is capable of inducing formation of cartilage in vivo. Although other bone morphogenetic proteins are members of the TGF-beta superfamily, this gene encodes a protein that is not closely related to other known growth factors. This gene is expressed as alternatively spliced variants that share an N-terminal protease domain but differ in their C-terminal region. [provided by RefSeq, Aug 2008]
Function	Cleaves the C-terminal propeptides of procollagen I, II and III. Induces cartilage and bone formation. May participate in dorsoventral patterning during early development by cleaving chordin (CHRD). Responsible for the proteolytic activation of lysyl oxidase LOX. [UniProt]
Calculated Mw	111 kDa (Human)
PTM	Proteolytically activated in the trans-Golgi network by furin-like/paired basic proprotein convertases, cleavage is not required for secretion. [UniProt]
Cellular Localization	Golgi apparatus, trans-Golgi network. Secreted, extracellular space, extracellular matrix. Note=Co-localizes with POSTN in the Golgi. [UniProt]

Images



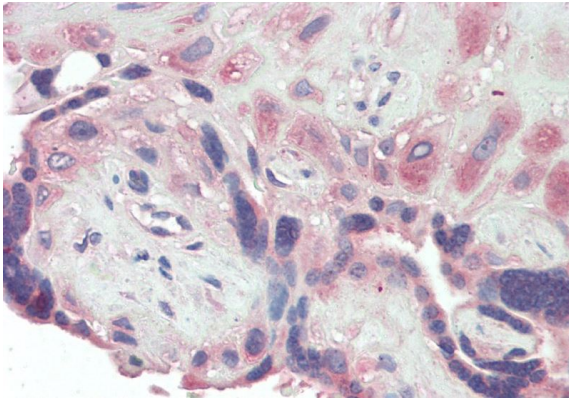
ARG42102 anti-BMP1 antibody IHC-P image

Immunohistochemistry: Paraffin-embedded Human cortex tissue. Antigen Retrieval: Steam tissue section in Citrate buffer (pH 6.0). The tissue section was stained with ARG42102 anti-BMP1 antibody at 5 µg/ml dilution.



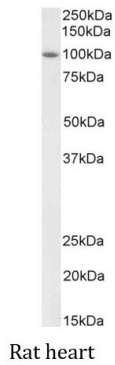
ARG42102 anti-BMP1 antibody WB image

Western blot: 35 µg of Human heart and Human kidney lysates (in RIPA buffer) stained with ARG42102 anti-BMP1 antibody at 1 µg/ml dilution and incubated at RT for 1 hour.



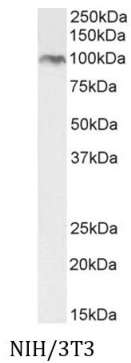
ARG42102 anti-BMP1 antibody IHC-P image

Immunohistochemistry: Paraffin-embedded Human placenta tissue. Antigen Retrieval: Steam tissue section in Citrate buffer (pH 6.0). The tissue section was stained with ARG42102 anti-BMP1 antibody at 5 µg/ml dilution.



ARG42102 anti-BMP1 antibody WB image

Western blot: 35 µg of Rat heart lysate (in RIPA buffer) stained with ARG42102 anti-BMP1 antibody at 2 µg/ml dilution and incubated at RT for 1 hour.



ARG42102 anti-BMP1 antibody WB image

Western blot: 35 µg of NIH/3T3 cell lysate (in RIPA buffer) stained with ARG42102 anti-BMP1 antibody at 2 µg/ml dilution and incubated at RT for 1 hour.