

ARG42101
anti-CNTN1 / Contactin 1 antibodyPackage: 50 µg
Store at: -20°C

Summary

Product Description	Goat Polyclonal antibody recognizes CNTN1 / Contactin 1
Tested Reactivity	Hu, Ms, Rat
Predict Reactivity	Dog, Pig
Tested Application	IHC-P, WB
Host	Goat
Clonality	Polyclonal
Isotype	IgG
Target Name	CNTN1 / Contactin 1
Species	Human
Immunogen	Synthetic peptide around the internal region of Human CNTN1 / Contactin 1. (C-QVTSQEYSARLEN) (NP_001834.2; NP_778203.1)
Conjugation	Un-conjugated
Alternate Names	Contactin-1; F3; Glycoprotein gp135; GP135; Neural cell surface protein F3; MYPCN

Application Instructions

Application table	Application	Dilution
	IHC-P	5 µg/ml
	WB	0.3 - 1 µg/ml
Application Note	IHC-P: Antigen Retrieval: Steam tissue section in Citrate buffer (pH 6.0). WB: Recommend incubate at RT for 1h. * The dilutions indicate recommended starting dilutions and the optimal dilutions or concentrations should be determined by the scientist.	
Observed Size	140 - 150 kDa (glycosylated)	

Properties

Form	Liquid
Purification	Ammonium sulphate precipitation followed by affinity purification with immunogen.
Buffer	Tris saline (pH 7.3), 0.02% Sodium azide and 0.5% BSA.
Preservative	0.02% Sodium azide
Stabilizer	0.5% BSA
Concentration	0.5 mg/ml
Storage instruction	For continuous use, store undiluted antibody at 2-8°C for up to a week. For long-term storage, aliquot and store at -20°C or below. Storage in frost free freezers is not recommended. Avoid repeated

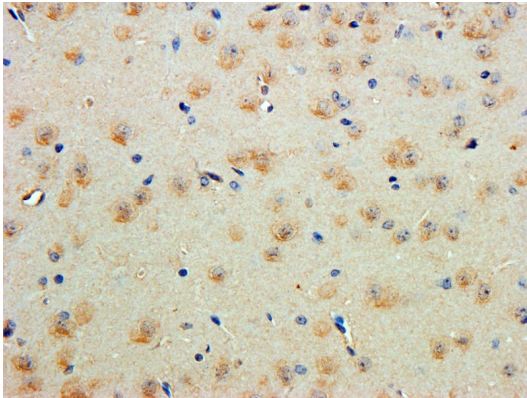
freeze/thaw cycles. Suggest spin the vial prior to opening. The antibody solution should be gently mixed before use.

Note For laboratory research only, not for drug, diagnostic or other use.

Bioinformation

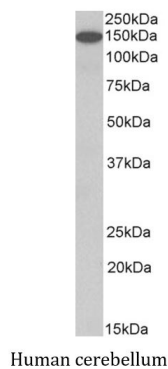
Gene Symbol	CNTN1
Gene Full Name	contactin 1
Background	The protein encoded by this gene is a member of the immunoglobulin superfamily. It is a glycosylphosphatidylinositol (GPI)-anchored neuronal membrane protein that functions as a cell adhesion molecule. It may play a role in the formation of axon connections in the developing nervous system. Multiple alternatively spliced transcript variants encoding different isoforms have been found for this gene. [provided by RefSeq, Dec 2011]
Function	Contactins mediate cell surface interactions during nervous system development. Involved in the formation of paranodal axo-glia junctions in myelinated peripheral nerves and in the signaling between axons and myelinating glial cells via its association with CNTNAP1. Participates in oligodendrocytes generation by acting as a ligand of NOTCH1. Its association with NOTCH1 promotes NOTCH1 activation through the released notch intracellular domain (NICD) and subsequent translocation to the nucleus. Interaction with TNR induces a repulsion of neurons and an inhibition of neurite outgrowth (By similarity). [UniProt]
Calculated Mw	113 kDa
Cellular Localization	Isoform 1: Cell membrane; Lipid-anchor, GPI-anchor; Extracellular side. Isoform 2: Cell membrane; Lipid-anchor, GPI-anchor; Extracellular side. [UniProt]

Images



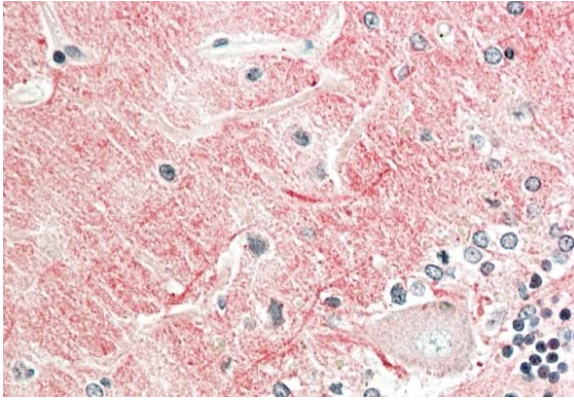
ARG42101 anti-CNTN1 / Contactin 1 antibody IHC-P image

Immunohistochemistry: Paraffin-embedded Mouse cerebral cortex tissue. Antigen Retrieval: Steam tissue section in Citrate buffer (pH 6.0). The tissue section was stained with ARG42101 anti-CNTN1 / Contactin 1 antibody at 5 µg/ml dilution followed by DAB-staining.



ARG42101 anti-CNTN1 / Contactin 1 antibody WB image

Western blot: 35 µg of Human cerebellum lysate (in RIPA buffer) stained with ARG42101 anti-CNTN1 / Contactin 1 antibody at 1 µg/ml dilution and incubated at RT for 1 hour.



ARG42101 anti-CNTN1 / Contactin 1 antibody IHC-P image

Immunohistochemistry: Paraffin-embedded Human cerebellum tissue. Antigen Retrieval: Steam tissue section in Citrate buffer (pH 6.0). The tissue section was stained with ARG42101 anti-CNTN1 / Contactin 1 antibody at 5 μ g/ml dilution followed by AP-staining.



ARG42101 anti-CNTN1 / Contactin 1 antibody WB image

Western blot: 35 μ g of Mouse brain and Rat brain lysates (in RIPA buffer) stained with ARG42101 anti-CNTN1 / Contactin 1 antibody at 1 μ g/ml dilution and incubated at RT for 1 hour.