

ARG42094 anti-CRLS1 antibody

Package: 50 µg
Store at: -20°C

Summary

Product Description	Goat Polyclonal antibody recognizes CRLS1
Tested Reactivity	Hu
Predict Reactivity	Ms, Rat, Cow, Dog, Pig
Tested Application	IHC-P, WB
Specificity	This antibody is expected to recognize both reported isoforms (NP_061968.1; NP_001120930.1).
Host	Goat
Clonality	Polyclonal
Isotype	IgG
Target Name	CRLS1
Species	Human
Immunogen	Synthetic peptide around the internal region of Human CRLS1. (C-RSALGSALDPLADK) (NP_061968.1; NP_001120930.1)
Conjugation	Un-conjugated
Alternate Names	CLS; CLS1; GCD10; C20orf155; dJ967N21.6; Cardioplin synthase (CMP-forming); CLS; EC 2.7.8.41; Protein GCD10 homolog

Application Instructions

Application table	Application	Dilution
	IHC-P	5 µg/ml
	WB	0.2 - 0.6 µg/ml
Application Note	WB: Recommend incubate at RT for 1h. IHC-P: Antigen Retrieval: Steam tissue section in Citrate buffer (pH 6.0). * The dilutions indicate recommended starting dilutions and the optimal dilutions or concentrations should be determined by the scientist.	
Positive Control	HEK293	
Observed Size	~ 33 kDa	

Properties

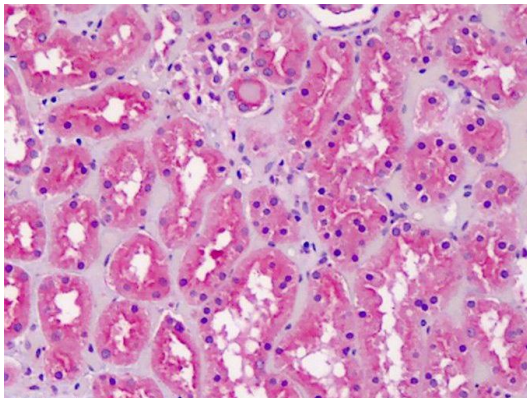
Form	Liquid
Purification	Ammonium sulphate precipitation followed by affinity purification with immunogen.
Buffer	Tris saline (pH 7.3), 0.02% Sodium azide and 0.5% BSA.
Preservative	0.02% Sodium azide

Stabilizer	0.5% BSA
Concentration	0.5 mg/ml
Storage instruction	For continuous use, store undiluted antibody at 2-8°C for up to a week. For long-term storage, aliquot and store at -20°C or below. Storage in frost free freezers is not recommended. Avoid repeated freeze/thaw cycles. Suggest spin the vial prior to opening. The antibody solution should be gently mixed before use.
Note	For laboratory research only, not for drug, diagnostic or other use.

Bioinformation

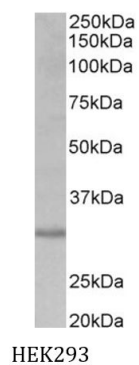
Gene Symbol	CRLS1
Gene Full Name	cardiolipin synthase 1
Background	This gene encodes a member of the CDP-alcohol phosphatidyltransferase class-I family of proteins. The encoded enzyme catalyzes the synthesis of cardiolipin, a phospholipid component of mitochondrial membranes that is critical for mitochondrial function. [provided by RefSeq, Apr 2016]
Function	Catalyzes the synthesis of cardiolipin (CL) (diphosphatidylglycerol) by specifically transferring a phosphatidyl group from CDP-diacylglycerol to phosphatidylglycerol (PG). CL is a key phospholipid in mitochondrial membranes and plays important roles in maintaining the functional integrity and dynamics of mitochondria under both optimal and stress conditions. [UniProt]
Calculated Mw	33 kDa
Cellular Localization	Mitochondrion inner membrane; Multi-pass membrane protein. [UniProt]

Images



ARG42094 anti-CRLS1 antibody IHC-P image

Immunohistochemistry: Paraffin-embedded Human kidney tissue. Antigen Retrieval: Steam tissue section in Citrate buffer (pH 6.0). The tissue section was stained with ARG42094 anti-CRLS1 antibody at 5 µg/ml dilution.



ARG42094 anti-CRLS1 antibody WB image

Western blot: 35 µg of HEK293 cell lysate (in RIPA buffer) stained with ARG42094 anti-CRLS1 antibody at 0.2 µg/ml dilution and incubated at RT for 1 hour.