

ARG42079 anti-GDF11 antibody

Package: 100 µl
Store at: -20°C

Summary

Product Description	Rabbit Polyclonal antibody recognizes GDF11
Tested Reactivity	Hu, Rat
Tested Application	ICC/IF, IHC-P, WB
Host	Rabbit
Clonality	Polyclonal
Isotype	IgG
Target Name	GDF11
Species	Human
Immunogen	Synthetic peptide of Human GDF11.
Conjugation	Un-conjugated
Alternate Names	GDF-11; Bone morphogenetic protein 11; BMP11; Growth/differentiation factor 11; BMP-11

Application Instructions

Application table	Application	Dilution
	ICC/IF	1:50 - 1:200
	IHC-P	1:50 - 1:200
	WB	1:500 - 1:2000
Application Note	* The dilutions indicate recommended starting dilutions and the optimal dilutions or concentrations should be determined by the scientist.	
Positive Control	HeLa	
Observed Size	~ 45 kDa	
Assay Time	O95390	

Properties

Form	Liquid
Purification	Affinity purified.
Buffer	PBS (pH 7.4), 150 mM NaCl, 0.02% Sodium azide and 50% Glycerol.
Preservative	0.02% Sodium azide
Stabilizer	50% Glycerol
Storage instruction	For continuous use, store undiluted antibody at 2-8°C for up to a week. For long-term storage, aliquot and store at -20°C. Storage in frost free freezers is not recommended. Avoid repeated freeze/thaw cycles. Suggest spin the vial prior to opening. The antibody solution should be gently mixed before use.

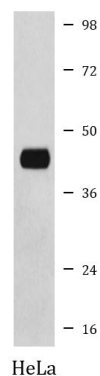
Note

For laboratory research only, not for drug, diagnostic or other use.

Bioinformation

Gene Symbol	GDF11
Gene Full Name	growth differentiation factor 11
Background	This gene encodes a secreted ligand of the TGF-beta (transforming growth factor-beta) superfamily of proteins. Ligands of this family bind various TGF-beta receptors leading to recruitment and activation of SMAD family transcription factors that regulate gene expression. The encoded preproprotein is proteolytically processed to generate each subunit of the disulfide-linked homodimer. This protein plays a role in the development of the nervous and other organ systems, and may regulate aging. [provided by RefSeq, Aug 2016]
Function	Secreted signal that acts globally to specify positional identity along the anterior/posterior axis during development. May play critical roles in patterning both mesodermal and neural tissues and in establishing the skeletal pattern (By similarity). Signals through activin receptors type-2, ACVR2A and ACVR2B, and activin receptors type-1, ACVR1B, ACVR1C and TGFBR1 leading to the phosphorylation of SMAD2 and SMAD3 (PubMed:28257634). [UniProt]
Calculated Mw	45 kDa
Cellular Localization	Secreted. [UniProt]

Images



ARG42079 anti-GDF11 antibody WB image

Western blot: HeLa cell lysate stained with ARG42079 anti-GDF11 antibody.