

ARG42078 anti-BMP1 antibody

Package: 100 µl
Store at: -20°C

Summary

Product Description	Rabbit Polyclonal antibody recognizes BMP1
Tested Reactivity	Hu
Tested Application	ICC/IF, WB
Host	Rabbit
Clonality	Polyclonal
Isotype	IgG
Target Name	BMP1
Species	Human
Immunogen	Recombinant protein of Human BMP1.
Conjugation	Un-conjugated
Alternate Names	OI13; Procollagen C-proteinase; PCP; PCOLC; PCP2; BMP-1; Bone morphogenetic protein 1; Mammalian tolloid protein; TLD; EC 3.4.24.19; mTld

Application Instructions

Application table	Application	Dilution
	ICC/IF	1:25
	WB	1:2000
Application Note	* The dilutions indicate recommended starting dilutions and the optimal dilutions or concentrations should be determined by the scientist.	
Positive Control	U-251 MG	
Observed Size	~ 95 kDa	

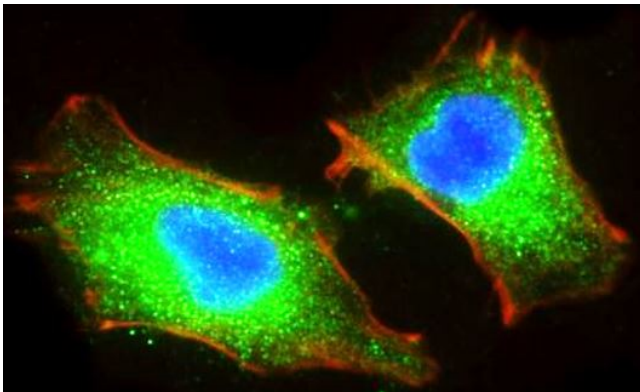
Properties

Form	Liquid
Purification	Purification with Protein A and immunogen peptide.
Buffer	PBS and 0.09% (W/V) Sodium azide.
Preservative	0.09% (W/V) Sodium azide.
Storage instruction	For continuous use, store undiluted antibody at 2-8°C for up to a week. For long-term storage, aliquot and store at -20°C or below. Storage in frost free freezers is not recommended. Avoid repeated freeze/thaw cycles. Suggest spin the vial prior to opening. The antibody solution should be gently mixed before use.
Note	For laboratory research only, not for drug, diagnostic or other use.

Bioinformation

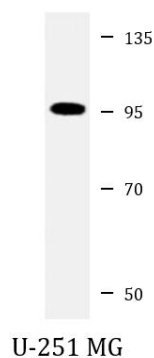
Gene Symbol	BMP1
Gene Full Name	bone morphogenetic protein 1
Background	This gene encodes a protein that is capable of inducing formation of cartilage in vivo. Although other bone morphogenetic proteins are members of the TGF-beta superfamily, this gene encodes a protein that is not closely related to other known growth factors. This gene is expressed as alternatively spliced variants that share an N-terminal protease domain but differ in their C-terminal region. [provided by RefSeq, Aug 2008]
Function	Cleaves the C-terminal propeptides of procollagen I, II and III. Induces cartilage and bone formation. May participate in dorsoventral patterning during early development by cleaving chordin (CHRD). Responsible for the proteolytic activation of lysyl oxidase LOX. [UniProt]
Calculated Mw	111 kDa
PTM	Proteolytically activated in the trans-Golgi network by furin-like/paired basic proprotein convertases, cleavage is not required for secretion. [UniProt]
Cellular Localization	Golgi apparatus, trans-Golgi network. Secreted, extracellular space, extracellular matrix. Note=Co-localizes with POSTN in the Golgi. [UniProt]

Images



ARG42078 anti-BMP1 antibody ICC/IF image

Immunofluorescence: 4% Paraformaldehyde-fixed, 0.1% Triton X-100 permeabilized A549 cells stained with ARG42078 anti-BMP1 antibody (green) at 1:25 dilution. Dylight® 554 Phalloidin (red) for cytoplasmic actin staining. DAPI (blue) for nuclear staining.



ARG42078 anti-BMP1 antibody WB image

Western blot: 20 µg of U-251 MG whole cell lysate stained with ARG42078 anti-BMP1 antibody at 1:2000 dilution.