

ARG42077
anti-CNTN1 / Contactin 1 antibodyPackage: 100 µl
Store at: -20°C

Summary

| | |
|---------------------|---|
| Product Description | Rabbit Polyclonal antibody recognizes CNTN1 / Contactin 1 |
| Tested Reactivity | Hu |
| Predict Reactivity | Ms, Rat, Bov |
| Tested Application | WB |
| Host | Rabbit |
| Clonality | Polyclonal |
| Isotype | IgG |
| Target Name | CNTN1 / Contactin 1 |
| Species | Human |
| Immunogen | KLH-conjugated synthetic peptide between aa. 635-662 of Human CNTN1. |
| Conjugation | Un-conjugated |
| Alternate Names | Contactin-1; F3; Glycoprotein gp135; GP135; Neural cell surface protein F3; MYPCN |

Application Instructions

| Application table | <table><thead><tr><th>Application</th><th>Dilution</th></tr></thead><tbody><tr><td>WB</td><td>1:1000</td></tr></tbody></table> | Application | Dilution | WB | 1:1000 |
|-------------------|--|-------------|----------|----|--------|
| Application | Dilution | | | | |
| WB | 1:1000 | | | | |
| Application Note | * The dilutions indicate recommended starting dilutions and the optimal dilutions or concentrations should be determined by the scientist. | | | | |
| Positive Control | Human brain | | | | |
| Observed Size | ~ 130 kDa | | | | |

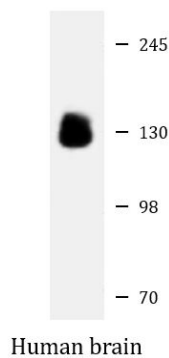
Properties

| | |
|---------------------|--|
| Form | Liquid |
| Purification | Purification with Protein A and immunogen peptide. |
| Buffer | PBS and 0.09% (W/V) Sodium azide. |
| Preservative | 0.09% (W/V) Sodium azide. |
| Storage instruction | For continuous use, store undiluted antibody at 2-8°C for up to a week. For long-term storage, aliquot and store at -20°C or below. Storage in frost free freezers is not recommended. Avoid repeated freeze/thaw cycles. Suggest spin the vial prior to opening. The antibody solution should be gently mixed before use. |
| Note | For laboratory research only, not for drug, diagnostic or other use. |

Bioinformation

| | |
|-----------------------|---|
| Gene Symbol | CNTN1 |
| Gene Full Name | contactin 1 |
| Background | The protein encoded by this gene is a member of the immunoglobulin superfamily. It is a glycosylphosphatidylinositol (GPI)-anchored neuronal membrane protein that functions as a cell adhesion molecule. It may play a role in the formation of axon connections in the developing nervous system. Multiple alternatively spliced transcript variants encoding different isoforms have been found for this gene. [provided by RefSeq, Dec 2011] |
| Function | Contactins mediate cell surface interactions during nervous system development. Involved in the formation of paranodal axo-glia junctions in myelinated peripheral nerves and in the signaling between axons and myelinating glial cells via its association with CNTNAP1. Participates in oligodendrocyte generation by acting as a ligand of NOTCH1. Its association with NOTCH1 promotes NOTCH1 activation through the released notch intracellular domain (NICD) and subsequent translocation to the nucleus. Interaction with TNR induces a repulsion of neurons and an inhibition of neurite outgrowth (By similarity). [UniProt] |
| Calculated Mw | 113 kDa |
| Cellular Localization | Isoform 1: Cell membrane; Lipid-anchor, GPI-anchor; Extracellular side. Isoform 2: Cell membrane; Lipid-anchor, GPI-anchor; Extracellular side. [UniProt] |

Images



ARG42077 anti-CNTN1 / Contactin 1 antibody WB image

Western blot: 20 µg of Human brain lysate stained with ARG42077 anti-CNTN1 / Contactin 1 antibody at 1:1000 dilution.