

ARG42071
anti-CRLS1 antibodyPackage: 100 µl
Store at: -20°C

Summary

Product Description	Rabbit Polyclonal antibody recognizes CRLS1
Tested Reactivity	Hu
Predict Reactivity	Ms, Rat
Tested Application	IHC-P, WB
Host	Rabbit
Clonality	Polyclonal
Isotype	IgG
Target Name	CRLS1
Species	Human
Immunogen	KLH-conjugated synthetic peptide between aa. 198-226 of Human CRLS1.
Conjugation	Un-conjugated
Alternate Names	CLS; CLS1; GCD10; C20orf155; dJ967N21.6; Cardiolipin synthase (CMP-forming); CLS; EC 2.7.8.41; Protein GCD10 homolog

Application Instructions

Application table	Application	Dilution
	IHC-P	1:50 - 1:100
	WB	1:1000
Application Note	* The dilutions indicate recommended starting dilutions and the optimal dilutions or concentrations should be determined by the scientist.	
Positive Control	T47D	
Observed Size	~ 32 kDa	

Properties

Form	Liquid
Purification	Purification with Protein A and immunogen peptide.
Buffer	PBS and 0.09% (W/V) Sodium azide.
Preservative	0.09% (W/V) Sodium azide.
Storage instruction	For continuous use, store undiluted antibody at 2-8°C for up to a week. For long-term storage, aliquot and store at -20°C or below. Storage in frost free freezers is not recommended. Avoid repeated freeze/thaw cycles. Suggest spin the vial prior to opening. The antibody solution should be gently mixed before use.

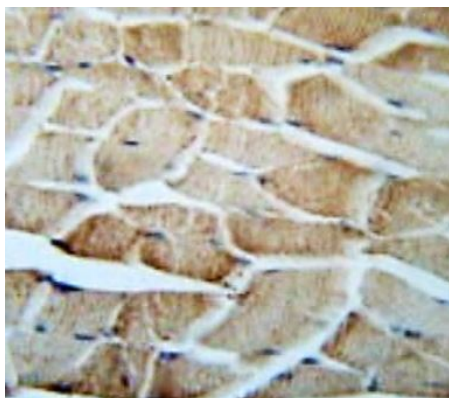
Note

For laboratory research only, not for drug, diagnostic or other use.

Bioinformation

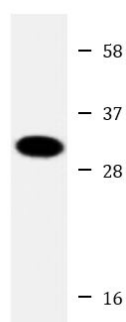
Gene Symbol	CRLS1
Gene Full Name	cardiolipin synthase 1
Background	This gene encodes a member of the CDP-alcohol phosphatidyltransferase class-I family of proteins. The encoded enzyme catalyzes the synthesis of cardiolipin, a phospholipid component of mitochondrial membranes that is critical for mitochondrial function. [provided by RefSeq, Apr 2016]
Function	Catalyzes the synthesis of cardiolipin (CL) (diphosphatidylglycerol) by specifically transferring a phosphatidyl group from CDP-diacylglycerol to phosphatidylglycerol (PG). CL is a key phospholipid in mitochondrial membranes and plays important roles in maintaining the functional integrity and dynamics of mitochondria under both optimal and stress conditions. [UniProt]
Calculated Mw	33 kDa
Cellular Localization	Mitochondrion inner membrane; Multi-pass membrane protein. [UniProt]

Images



ARG42071 anti-CRLS1 antibody IHC-P image

Immunohistochemistry: Formalin-fixed and paraffin-embedded Human skeletal muscle tissue stained with ARG42071 anti-CRLS1 antibody.



T47D

ARG42071 anti-CRLS1 antibody WB image

Western blot: 20 µg of T47D whole cell lysate stained with ARG42071 anti-CRLS1 antibody at 1:1000 dilution.