

ARG42043 anti-Dopamine beta Hydroxylase antibody

Package: 100 µl
Store at: -20°C

Summary

Product Description	Rabbit Polyclonal antibody recognizes Dopamine beta Hydroxylase
Tested Reactivity	Hu, Ms, Rat
Tested Application	ICC/IF, WB
Host	Rabbit
Clonality	Polyclonal
Isotype	IgG
Target Name	Dopamine beta Hydroxylase
Species	Human
Immunogen	KLH-conjugated synthetic peptide between aa. 27-56 of Human Dopamine beta Hydroxylase.
Conjugation	Un-conjugated
Alternate Names	EC 1.14.17.1; DBM; Dopamine beta-monoxygenase; Dopamine beta-hydroxylase

Application Instructions

Application table	Application	Dilution
	ICC/IF	1:25
	WB	1:2000
Application Note	* The dilutions indicate recommended starting dilutions and the optimal dilutions or concentrations should be determined by the scientist.	
Positive Control	Rat adrenal gland	
Observed Size	~ 75 kDa	

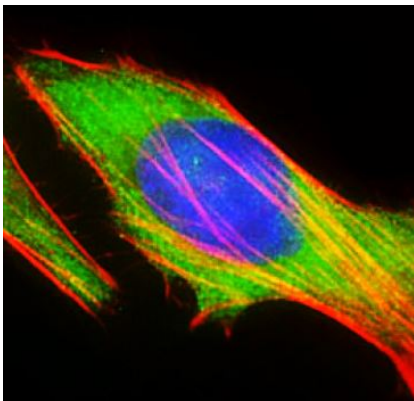
Properties

Form	Liquid
Purification	Purification with Protein A and immunogen peptide.
Buffer	PBS and 0.09% (W/V) Sodium azide.
Preservative	0.09% (W/V) Sodium azide
Storage instruction	For continuous use, store undiluted antibody at 2-8°C for up to a week. For long-term storage, aliquot and store at -20°C or below. Storage in frost free freezers is not recommended. Avoid repeated freeze/thaw cycles. Suggest spin the vial prior to opening. The antibody solution should be gently mixed before use.
Note	For laboratory research only, not for drug, diagnostic or other use.

Bioinformation

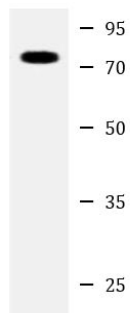
Gene Symbol	DBH
Gene Full Name	dopamine beta-hydroxylase (dopamine beta-monooxygenase)
Background	The protein encoded by this gene is an oxidoreductase belonging to the copper type II, ascorbate-dependent monooxygenase family. It is present in the synaptic vesicles of postganglionic sympathetic neurons and converts dopamine to norepinephrine. It exists in both soluble and membrane-bound forms, depending on the absence or presence, respectively, of a signal peptide. [provided by RefSeq, Jul 2008]
Function	Conversion of dopamine to noradrenaline. [UniProt]
Calculated Mw	69 kDa
PTM	N-glycosylated. Proteolytic cleavage after the membrane-anchor leads to the release of the soluble form. [UniProt]
Cellular Localization	Soluble dopamine beta-hydroxylase: Cytoplasmic vesicle, secretory vesicle lumen. Cytoplasmic vesicle, secretory vesicle, chromaffin granule lumen. Secreted. Cytoplasmic vesicle, secretory vesicle membrane; Single-pass type II membrane protein. Cytoplasmic vesicle, secretory vesicle, chromaffin granule membrane; Single-pass type II membrane protein. [UniProt]

Images



ARG42043 anti-Dopamine beta Hydroxylase antibody ICC/IF image

Immunofluorescence: 4% Paraformaldehyde-fixed, 0.1% Triton X-100 permeabilized HeLa cells stained with ARG42043 anti-Dopamine beta Hydroxylase antibody (green) at 1:25 dilution. Dylight® 554 Phalloidin (red) for cytoplasmic actin staining. DAPI (blue) for nuclear staining.



Rat adrenal gland

ARG42043 anti-Dopamine beta Hydroxylase antibody WB image

Western blot: 20 µg of Rat adrenal gland lysate stained with ARG42043 anti-Dopamine beta Hydroxylase antibody at 1:2000 dilution.