

**ARG42010**  
anti-KIFC1 antibodyPackage: 100 µl  
Store at: -20°C

### Summary

Product Description	Rabbit Polyclonal antibody recognizes KIFC1
Tested Reactivity	Hu, Ms, Rat
Tested Application	ICC/IF, IHC-P, WB
Host	Rabbit
Clonality	Polyclonal
Isotype	IgG
Target Name	KIFC1
Species	Human
Immunogen	Recombinant fusion protein corresponding to aa. 1-250 of Human KIFC1 (NP_002254.2).
Conjugation	Un-conjugated
Alternate Names	Kinesin-like protein 2; Kinesin-like protein KIFC1; Kinesin-related protein HSET; HSET; KNSL2

### Application Instructions

Application table	Application	Dilution
	ICC/IF	1:50 - 1:200
	IHC-P	1:50 - 1:200
	WB	1:500 - 1:2000
Application Note	* The dilutions indicate recommended starting dilutions and the optimal dilutions or concentrations should be determined by the scientist.	
Positive Control	Jurkat	
Observed Size	~ 73 kDa	

### Properties

Form	Liquid
Purification	Affinity purified.
Buffer	PBS (pH 7.3), 0.02% Sodium azide and 50% Glycerol.
Preservative	0.02% Sodium azide
Stabilizer	50% Glycerol
Storage instruction	For continuous use, store undiluted antibody at 2-8°C for up to a week. For long-term storage, aliquot and store at -20°C. Storage in frost free freezers is not recommended. Avoid repeated freeze/thaw cycles. Suggest spin the vial prior to opening. The antibody solution should be gently mixed before use.

**Note**

For laboratory research only, not for drug, diagnostic or other use.

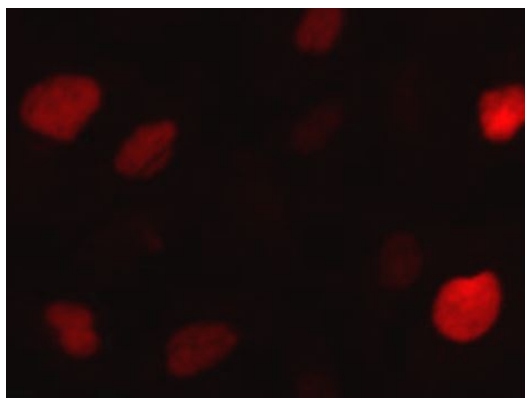
## Bioinformation

---

Gene Symbol	KIFC1
Gene Full Name	kinesin family member C1
Function	Minus end-directed microtubule-dependent motor required for bipolar spindle formation. May contribute to movement of early endocytic vesicles. [UniProt]
Calculated Mw	74 kDa
Cellular Localization	Nucleus. Cytoplasm, cytoskeleton, microtubule organizing center, centrosome. Cytoplasm, cytoskeleton, spindle. Early endosome. Note=Associated with nucleus during interphase, centrosomes in early and spindle in later mitosis. [UniProt]

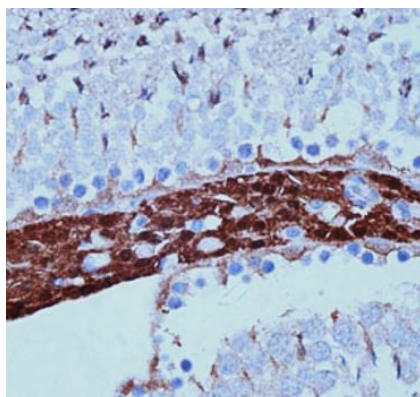
## Images

---



ARG42010 anti-KIFC1 antibody ICC/IF image

Immunofluorescence: U2OS cells stained with ARG42010 anti-KIFC1 antibody at 1:100 dilution.



ARG42010 anti-KIFC1 antibody IHC-P image

Immunohistochemistry: Paraffin-embedded Rat testis tissue stained with ARG42010 anti-KIFC1 antibody at 1:100 dilution.

ARG42010 anti-KIFC1 antibody WB image

Western blot: 25 µg of Jurkat cell lysate stained with ARG42010 anti-KIFC1 antibody at 1:3000 dilution.

