

**ARG42000**  
anti-ELP3 / KAT9 antibodyPackage: 100 µl  
Store at: -20°C

### Summary

|                     |   |
|---------------------|---|
| Product Description | Rabbit Polyclonal antibody recognizes ELP3 / KAT9     |
| Tested Reactivity   | Hu, Ms, Rat   |
| Tested Application  | ICC/IF, IP, WB  |
| Host                | Rabbit  |
| Clonality           | Polyclonal  |
| Isotype             | IgG   |
| Target Name         | ELP3 / KAT9   |
| Species             | Human   |
| Immunogen           | Synthetic peptide of Human ELP3 / KAT9.               |
| Conjugation         | Un-conjugated   |
| Alternate Names     | KAT9; Elongator complex protein 3; hELP3; EC 2.3.1.48 |

### Application Instructions

| Application table | Application  | Dilution       |
|-------------------|--|----------------|
|                   | ICC/IF   | 1:50 - 1:200   |
|                   | IP   | 1:50           |
|                   | WB   | 1:500 - 1:2000 |
| Application Note  | * The dilutions indicate recommended starting dilutions and the optimal dilutions or concentrations should be determined by the scientist. |                |
| Positive Control  | HeLa   |                |
| Observed Size     | ~ 62 kDa   |                |

### Properties

|                     |   |
|---------------------|---|
| Form                | Liquid  |
| Purification        | Affinity purified.  |
| Buffer              | PBS (pH 7.4), 150 mM NaCl, 0.02% Sodium azide and 50% Glycerol.   |
| Preservative        | 0.02% Sodium azide  |
| Stabilizer          | 50% Glycerol  |
| Storage instruction | For continuous use, store undiluted antibody at 2-8°C for up to a week. For long-term storage, aliquot and store at -20°C. Storage in frost free freezers is not recommended. Avoid repeated freeze/thaw cycles. Suggest spin the vial prior to opening. The antibody solution should be gently mixed before use. |

**Note**

For laboratory research only, not for drug, diagnostic or other use.

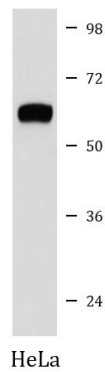
## Bioinformation

---

|                       |  |
|-----------------------|--|
| Gene Symbol           | ELP3   |
| Gene Full Name        | elongator acetyltransferase complex subunit 3  |
| Background            | ELP3 is the catalytic subunit of the histone acetyltransferase elongator complex, which contributes to transcript elongation and also regulates the maturation of projection neurons (Creppe et al., 2009 [PubMed 19185337]).[supplied by OMIM, Apr 2009]  |
| Function              | Catalytic histone acetyltransferase subunit of the RNA polymerase II elongator complex, which is a component of the RNA polymerase II (Pol II) holoenzyme and is involved in transcriptional elongation. Elongator may play a role in chromatin remodeling and is involved in acetylation of histones H3 and probably H4. Involved in acetylation of alpha-tubulin. May also have a methyltransferase activity. Involved in cell migration. Involved in neurogenesis. Regulates the migration and branching of projection neurons in the developing cerebral cortex, through a process depending on alpha-tubulin acetylation (By similarity). [UniProt] |
| Calculated Mw         | 62 kDa   |
| Cellular Localization | Cytoplasm. Isoform 1: Nucleus. Isoform 2: Cytoplasm. Nucleus. [UniProt]  |

## Images

---



ARG42000 anti-ELP3 / KAT9 antibody WB image

Western blot: HeLa cell lysate stained with ARG42000 anti-ELP3 / KAT9 antibody.