

ARG41993 anti-CDCA3 antibody

Package: 100 µl
Store at: -20°C

Summary

Product Description	Rabbit Polyclonal antibody recognizes CDCA3
Tested Reactivity	Hu
Predict Reactivity	Ms, Rat
Tested Application	ICC/IF, WB
Host	Rabbit
Clonality	Polyclonal
Isotype	IgG
Target Name	CDCA3
Species	Human
Immunogen	Synthetic peptide of Human CDCA3.
Conjugation	Un-conjugated
Alternate Names	Cell division cycle-associated protein 3; Gene-rich cluster protein C8; Trigger of mitotic entry protein 1; TOME-1; GRCC8

Application Instructions

Application table	Application	Dilution
	ICC/IF	1:50 - 1:100
	WB	1:500 - 1:1000
Application Note	* The dilutions indicate recommended starting dilutions and the optimal dilutions or concentrations should be determined by the scientist.	
Positive Control	MCF7	
Observed Size	~ 27 kDa	

Properties

Form	Liquid
Purification	Affinity purified.
Buffer	PBS (pH 7.4), 150 mM NaCl, 0.02% Sodium azide and 50% Glycerol.
Preservative	0.02% Sodium azide
Stabilizer	50% Glycerol
Storage instruction	For continuous use, store undiluted antibody at 2-8°C for up to a week. For long-term storage, aliquot and store at -20°C. Storage in frost free freezers is not recommended. Avoid repeated freeze/thaw cycles. Suggest spin the vial prior to opening. The antibody solution should be gently mixed before use.

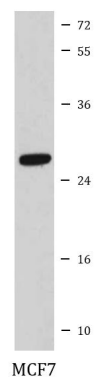
Note

For laboratory research only, not for drug, diagnostic or other use.

Bioinformation

Gene Symbol	CDCA3
Gene Full Name	cell division cycle associated 3
Function	F-box-like protein which is required for entry into mitosis. Acts by participating in E3 ligase complexes that mediate the ubiquitination and degradation of WEE1 kinase at G2/M phase (By similarity). [UniProt]
Calculated Mw	29 kDa
PTM	Ubiquitinated and degraded by the APC/C-Cdh1 complex. [UniProt]
Cellular Localization	Cytoplasm, cytosol. [UniProt]

Images



ARG41993 anti-CDCA3 antibody WB image

Western blot: MCF7 cell lysate stained with ARG41993 anti-CDCA3 antibody.