

ARG41986 anti-MEKK2 antibody

Package: 100 µl
Store at: -20°C

Summary

Product Description	Rabbit Polyclonal antibody recognizes MEKK2
Tested Reactivity	Hu, Ms, Rat
Tested Application	FACS, ICC/IF, IHC-P, IP, WB
Host	Rabbit
Clonality	Polyclonal
Isotype	IgG
Target Name	MEKK2
Species	Human
Immunogen	Synthetic peptide of Human MEKK2.
Conjugation	Un-conjugated
Alternate Names	MAPK/ERK kinase kinase 2; MEKK2B; MEK kinase 2; EC 2.7.11.25; Mitogen-activated protein kinase kinase kinase 2; MEKK2; MEKK 2

Application Instructions

Application table	Application	Dilution
	FACS	1:50
	ICC/IF	1:50 - 1:200
	IHC-P	1:50 - 1:200
	IP	1:30
	WB	1:5000 - 1:20000
Application Note	* The dilutions indicate recommended starting dilutions and the optimal dilutions or concentrations should be determined by the scientist.	
Positive Control	HeLa	
Observed Size	~ 73 kDa	

Properties

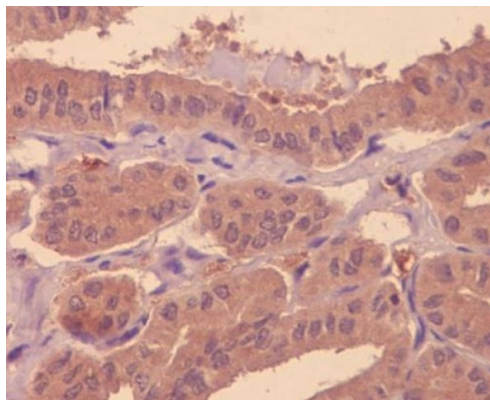
Form	Liquid
Purification	Affinity purified.
Buffer	PBS (pH 7.4), 150 mM NaCl, 0.02% Sodium azide and 50% Glycerol.
Preservative	0.02% Sodium azide
Stabilizer	50% Glycerol

Storage instruction	For continuous use, store undiluted antibody at 2-8°C for up to a week. For long-term storage, aliquot and store at -20°C. Storage in frost free freezers is not recommended. Avoid repeated freeze/thaw cycles. Suggest spin the vial prior to opening. The antibody solution should be gently mixed before use.
Note	For laboratory research only, not for drug, diagnostic or other use.

Bioinformation

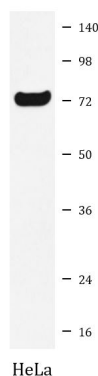
Gene Symbol	MAP3K2
Gene Full Name	mitogen-activated protein kinase kinase kinase 2
Background	The protein encoded by this gene is a member of serine/threonine protein kinase family. This kinase preferentially activates other kinases involved in the MAP kinase signaling pathway. This kinase has been shown to directly phosphorylate and activate I kappa B kinases, and thus plays a role in NF-kappa B signaling pathway. This kinase has also been found to bind and activate protein kinase C-related kinase 2, which suggests its involvement in a regulated signaling process. [provided by RefSeq, Jul 2008]
Function	Component of a protein kinase signal transduction cascade. Regulates the JNK and ERK5 pathways by phosphorylating and activating MAP2K5 and MAP2K7 (By similarity). Plays a role in caveolae kiss-and-run dynamics. [UniProt]
Calculated Mw	70 kDa
PTM	Autophosphorylated. Ubiquitination by XIAP/BIRC4 does not lead to proteasomal degradation. [UniProt]
Cellular Localization	Cytoplasm. Nucleus. Note=Upon EGF stimulation, translocates into the nucleus. [UniProt]

Images



ARG41986 anti-MEKK2 antibody IHC-P image

Immunohistochemistry: Paraffin-embedded Human thyroid cancer tissue stained with ARG41986 anti-MEKK2 antibody.



ARG41986 anti-MEKK2 antibody WB image

Western blot: HeLa cell lysate stained with ARG41986 anti-MEKK2 antibody.