

ARG41927 anti-CD103 / Integrin alpha E antibody

Package: 100 µl
Store at: -20°C

Summary

Product Description	Rabbit Polyclonal antibody recognizes CD103 / Integrin alpha E
Tested Reactivity	Hu
Tested Application	IHC-P
Host	Rabbit
Clonality	Polyclonal
Isotype	IgG
Target Name	CD103 / Integrin alpha E
Species	Human
Immunogen	Synthetic peptide of Human CD103 / Integrin alpha E.
Conjugation	Un-conjugated
Alternate Names	CD103; HUMINAE; Integrin alpha-E; Mucosal lymphocyte 1 antigen; CD antigen CD103; HML-1 antigen; Integrin alpha-IEL

Application Instructions

Application table	Application	Dilution
	IHC-P	1:100 - 1:500
Application Note	* The dilutions indicate recommended starting dilutions and the optimal dilutions or concentrations should be determined by the scientist.	

Properties

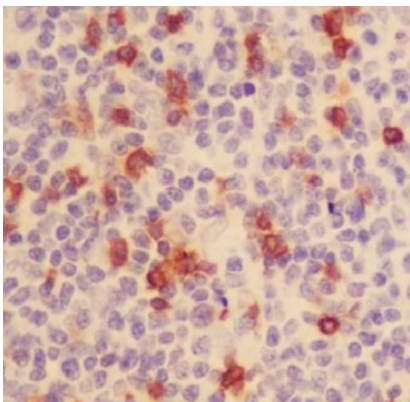
Form	Liquid
Purification	Affinity purified.
Buffer	PBS (pH 7.4), 150 mM NaCl, 0.02% Sodium azide and 50% Glycerol.
Preservative	0.02% Sodium azide
Stabilizer	50% Glycerol
Storage instruction	For continuous use, store undiluted antibody at 2-8°C for up to a week. For long-term storage, aliquot and store at -20°C. Storage in frost free freezers is not recommended. Avoid repeated freeze/thaw cycles. Suggest spin the vial prior to opening. The antibody solution should be gently mixed before use.
Note	For laboratory research only, not for drug, diagnostic or other use.

Bioinformation

Gene Symbol	ITGAE
-------------	-------

Gene Full Name	integrin, alpha E (antigen CD103, human mucosal lymphocyte antigen 1; alpha polypeptide)
Background	Integrins are heterodimeric integral membrane proteins composed of an alpha chain and a beta chain. This gene encodes an I-domain-containing alpha integrin that undergoes post-translational cleavage in the extracellular domain, yielding disulfide-linked heavy and light chains. In combination with the beta 7 integrin, this protein forms the E-cadherin binding integrin known as the human mucosal lymphocyte-1 antigen. This protein is preferentially expressed in human intestinal intraepithelial lymphocytes (IEL), and in addition to a role in adhesion, it may serve as an accessory molecule for IEL activation. [provided by RefSeq, Jul 2008]
Function	Integrin alpha-E/beta-7 is a receptor for E-cadherin. It mediates adhesion of intra-epithelial T-lymphocytes to epithelial cell monolayers. [UniProt]
Calculated Mw	130 kDa
Cellular Localization	Membrane; Single-pass type I membrane protein. [UniProt]

Images



ARG41927 anti-CD103 / Integrin alpha E antibody IHC-P image

Immunohistochemistry: Paraffin-embedded Human tonsil tissue stained with ARG41927 anti-CD103 / Integrin alpha E antibody.
