

ARG41905 anti-CD2 antibody

Package: 50 µg
Store at: -20°C

Summary

Product Description	Rabbit Polyclonal antibody recognizes CD2
Tested Reactivity	Ms
Tested Application	IHC-P, WB
Host	Rabbit
Clonality	Polyclonal
Isotype	IgG
Target Name	CD2
Species	Mouse
Immunogen	Recombinant protein corresponding to R23-S203 of Mouse CD2.
Conjugation	Un-conjugated
Alternate Names	T-cell surface antigen T11/Leu-5; LFA-3 receptor; T-cell surface antigen CD2; SRBC; Erythrocyte receptor; CD antigen CD2; T11; Rosette receptor; LFA-2

Application Instructions

Application table	Application	Dilution
	IHC-P	1:200 - 1:1000
	WB	1:500 - 1:2000
Application Note	* The dilutions indicate recommended starting dilutions and the optimal dilutions or concentrations should be determined by the scientist.	
Observed Size	~ 57 kDa	

Properties

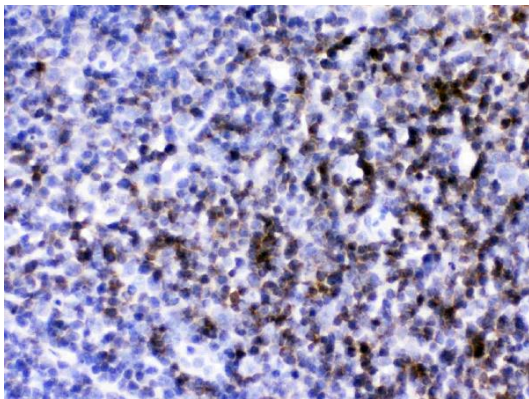
Form	Liquid
Purification	Affinity purification with immunogen.
Buffer	0.2% Na ₂ HPO ₄ , 0.9% NaCl, 0.05% Sodium azide and 5% BSA.
Preservative	0.05% Sodium azide
Stabilizer	5% BSA
Concentration	0.5 mg/ml
Storage instruction	For continuous use, store undiluted antibody at 2-8°C for up to a week. For long-term storage, aliquot and store at -20°C or below. Storage in frost free freezers is not recommended. Avoid repeated freeze/thaw cycles. Suggest spin the vial prior to opening. The antibody solution should be gently mixed before use.

Note For laboratory research only, not for drug, diagnostic or other use.

Bioinformation

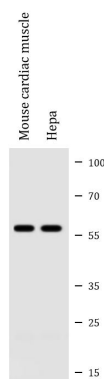
Gene Symbol	CD2
Gene Full Name	CD2 molecule
Background	CD2 is a surface antigen of the human T-lymphocyte lineage that is expressed on all peripheral blood T cells (summarized by Sewell et al., 1986 [PubMed 3490670]). It is one of the earliest T-cell markers, being present on more than 95% of thymocytes; it is also found on some natural killer cells but not on B lymphocytes. Monoclonal antibodies directed against CD2 inhibit the formation of rosettes with sheep erythrocytes, indicating that CD2 is the erythrocyte receptor or is closely associated with it.[supplied by OMIM, Jul 2010]
Function	CD2 interacts with lymphocyte function-associated antigen (LFA-3) and CD48/BCM1 to mediate adhesion between T-cells and other cell types. CD2 is implicated in the triggering of T-cells, the cytoplasmic domain is implicated in the signaling function. [UniProt]
Calculated Mw	39 kDa
Cellular Localization	Cell membrane; Single-pass type I membrane protein. [UniProt]

Images



ARG41905 anti-CD2 antibody IHC-P image

Immunohistochemistry: Paraffin-embedded Mouse lymphaden tissue stained with ARG41905 anti-CD2 antibody at 1 µg/ml dilution.



ARG41905 anti-CD2 antibody WB image

Western blot: Mouse cardiac muscle extract and Hepa whole cell lysate stained with ARG41905 anti-CD2 antibody at 0.5 µg/ml dilution.