

ARG41904 anti-CD2 antibody

Package: 50 µg
Store at: -20°C

Summary

| | |
|---------------------|--------------------------------------------------------------------------------------------------------------------------------------------------------|
| Product Description | Rabbit Polyclonal antibody recognizes CD2 |
| Tested Reactivity | Ms, Rat |
| Tested Application | WB |
| Host | Rabbit |
| Clonality | Polyclonal |
| Isotype | IgG |
| Target Name | CD2 |
| Species | Mouse |
| Immunogen | Synthetic peptide corresponding to aa. 224-242 of Mouse CD2. (FIFCICKRRKRNRKDEE) |
| Conjugation | Un-conjugated |
| Alternate Names | T-cell surface antigen T11/Leu-5; LFA-3 receptor; T-cell surface antigen CD2; SRBC; Erythrocyte receptor; CD antigen CD2; T11; Rosette receptor; LFA-2 |

Application Instructions

| | | |
|-------------------|--------------------------------------------------------------------------------------------------------------------------------------------|----------------|
| Application table | Application | Dilution |
| | WB | 1:500 - 1:2000 |
| Application Note | * The dilutions indicate recommended starting dilutions and the optimal dilutions or concentrations should be determined by the scientist. | |
| Observed Size | ~ 50 kDa | |

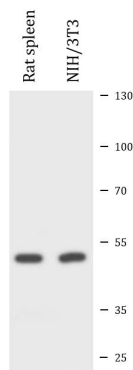
Properties

| | |
|---------------------|----------------------------------------------------------------------------------------------------------------------------------------------------------------------------------------------------------------------------------------------------------------------------------------------------------------------------|
| Form | Liquid |
| Purification | Affinity purification with immunogen. |
| Buffer | 0.2% Na ₂ HPO ₄ , 0.9% NaCl, 0.05% Thimerosal, 0.05% Sodium azide and 5% BSA. |
| Preservative | 0.05% Thimerosal and 0.05% Sodium azide |
| Stabilizer | 5% BSA |
| Concentration | 0.5 mg/ml |
| Storage instruction | For continuous use, store undiluted antibody at 2-8°C for up to a week. For long-term storage, aliquot and store at -20°C or below. Storage in frost free freezers is not recommended. Avoid repeated freeze/thaw cycles. Suggest spin the vial prior to opening. The antibody solution should be gently mixed before use. |
| Note | For laboratory research only, not for drug, diagnostic or other use. |

Bioinformation

| | |
|-----------------------|--------------------------------------------------------------------------------------------------------------------------------------------------------------------------------------------------------------------------------------------------------------------------------------------------------------------------------------------------------------------------------------------------------------------------------------------------------------------------------------------------------------------------------------------------------|
| Gene Symbol | CD2 |
| Gene Full Name | CD2 molecule |
| Background | CD2 is a surface antigen of the human T-lymphocyte lineage that is expressed on all peripheral blood T cells (summarized by Sewell et al., 1986 [PubMed 3490670]). It is one of the earliest T-cell markers, being present on more than 95% of thymocytes; it is also found on some natural killer cells but not on B lymphocytes. Monoclonal antibodies directed against CD2 inhibit the formation of rosettes with sheep erythrocytes, indicating that CD2 is the erythrocyte receptor or is closely associated with it.[supplied by OMIM, Jul 2010] |
| Function | CD2 interacts with lymphocyte function-associated antigen (LFA-3) and CD48/BCM1 to mediate adhesion between T-cells and other cell types. CD2 is implicated in the triggering of T-cells, the cytoplasmic domain is implicated in the signaling function. [UniProt] |
| Calculated Mw | 39 kDa |
| Cellular Localization | Cell membrane; Single-pass type I membrane protein. [UniProt] |

Images



ARG41904 anti-CD2 antibody WB image

Western blot: Rat spleen and NIH/3T3 cell lysates stained with ARG41904 anti-CD2 antibody.