

## ARG41858 anti-FOLR2 antibody

Package: 100 µl  
Store at: -20°C

### Summary

Product Description	Rabbit Polyclonal antibody recognizes FOLR2
Tested Reactivity	Hu, Ms
Tested Application	FACS, WB
Host	Rabbit
Clonality	Polyclonal
Isotype	IgG
Target Name	FOLR2
Species	Human
Immunogen	KLH-conjugated synthetic peptide between aa. 18-46 of Human FOLR2.
Conjugation	Un-conjugated
Alternate Names	Folate receptor 2; BETA-HFR; FBP; Folate receptor beta; Folate receptor, fetal/placental; FBP/PL-1; FR-beta; FR-P3; Placental folate-binding protein; FR-BETA

### Application Instructions

Application table	Application	Dilution
	FACS	1:10 - 1:50
	WB	1:1000
Application Note	* The dilutions indicate recommended starting dilutions and the optimal dilutions or concentrations should be determined by the scientist.	
Positive Control	MDA-MB-453	
Observed Size	~ 29 kDa	

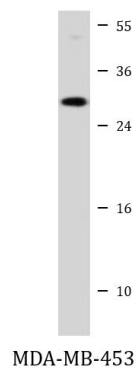
### Properties

Form	Liquid
Purification	Purification with Protein A and immunogen peptide.
Buffer	PBS and 0.09% (W/V) Sodium azide.
Preservative	0.09% (W/V) Sodium azide
Storage instruction	For continuous use, store undiluted antibody at 2-8°C for up to a week. For long-term storage, aliquot and store at -20°C or below. Storage in frost free freezers is not recommended. Avoid repeated freeze/thaw cycles. Suggest spin the vial prior to opening. The antibody solution should be gently mixed before use.
Note	For laboratory research only, not for drug, diagnostic or other use.

## Bioinformation

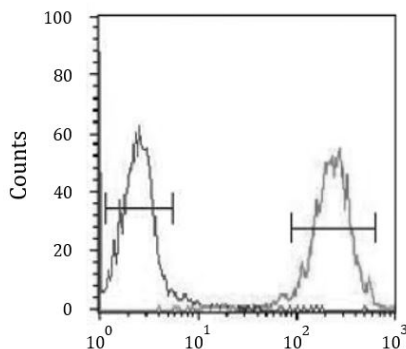
Gene Symbol	FOLR2
Gene Full Name	folate receptor 2 (fetal)
Background	The protein encoded by this gene is a member of the folate receptor (FOLR) family, and these genes exist in a cluster on chromosome 11. Members of this gene family have a high affinity for folic acid and for several reduced folic acid derivatives, and they mediate delivery of 5-methyltetrahydrofolate to the interior of cells. This protein has a 68% and 79% sequence homology with the FOLR1 and FOLR3 proteins, respectively. Although this protein was originally thought to be specific to placenta, it can also exist in other tissues, and it may play a role in the transport of methotrexate in synovial macrophages in rheumatoid arthritis patients. Multiple transcript variants that encode the same protein have been found for this gene. [provided by RefSeq, Jul 2008]
Function	Binds to folate and reduced folic acid derivatives and mediates delivery of 5-methyltetrahydrofolate and folate analogs into the interior of cells. Has high affinity for folate and folic acid analogs at neutral pH. Exposure to slightly acidic pH after receptor endocytosis triggers a conformation change that strongly reduces its affinity for folates and mediates their release. [UniProt]
Calculated Mw	29 kDa
PTM	N-glycosylated. [UniProt]
Cellular Localization	Cell membrane; Lipid-anchor, GPI-anchor. Secreted. [UniProt]

## Images



ARG41858 anti-FOLR2 antibody WB image

Western blot: 20 µg of MDA-MB-453 cell lysate stained with ARG41858 anti-FOLR2 antibody at 1:1000 dilution.



ARG41858 anti-FOLR2 antibody FACS image

Flow Cytometry: HL-60 cells stained with ARG41858 anti-FOLR2 antibody (right histogram) or without primary antibody as control (left histogram), followed by incubation with FITC labelled secondary antibody.