

ARG41845 anti-CDC16 / APC6 antibody

Package: 50 µg
Store at: -20°C

Summary

Product Description	Rabbit Polyclonal antibody recognizes CDC16 / APC6
Tested Reactivity	Hu
Predict Reactivity	Ms
Tested Application	IHC-P, WB
Host	Rabbit
Clonality	Polyclonal
Isotype	IgG
Target Name	CDC16 / APC6
Species	Human
Immunogen	An 18 amino acid synthetic peptide within the first 50 amino acids of Human CDC16 / APC6.
Conjugation	Un-conjugated
Alternate Names	Cell division cycle protein 16 homolog; Cyclosome subunit 6; Anaphase-promoting complex subunit 6; CDC16Hs; CDC16 homolog; APC6; CUT9; ANAPC6

Application Instructions

Application table	Application	Dilution
	IHC-P	5 - 20 µg/ml
	WB	1 - 2 µg/ml
Application Note	* The dilutions indicate recommended starting dilutions and the optimal dilutions or concentrations should be determined by the scientist.	
Positive Control	Human liver	
Observed Size	~ 72 kDa	

Properties

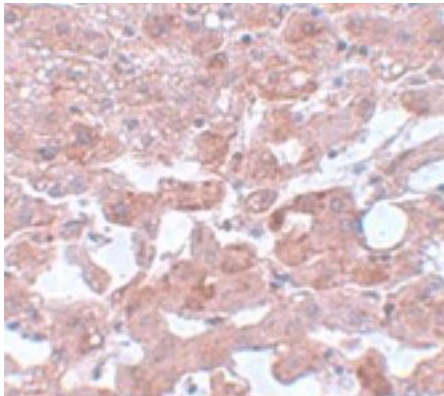
Form	Liquid
Purification	Affinity purification with immunogen.
Buffer	PBS and 0.02% Sodium azide.
Preservative	0.02% Sodium azide
Concentration	1 mg/ml
Storage instruction	For continuous use, store undiluted antibody at 2-8°C for up to a week. For long-term storage, aliquot and store at -20°C or below. Storage in frost free freezers is not recommended. Avoid repeated freeze/thaw cycles. Suggest spin the vial prior to opening. The antibody solution should be gently mixed before use.

Note

For laboratory research only, not for drug, diagnostic or other use.

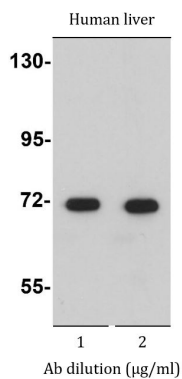
Bioinformation

Gene Symbol	CDC16
Gene Full Name	cell division cycle 16
Background	This gene encodes a component protein of the APC complex, which is composed of eight proteins and functions as a protein ubiquitin ligase. The APC complex is a cyclin degradation system that governs exit from mitosis. Each component protein of the APC complex is highly conserved among eukaryotic organisms. This protein and two other APC complex proteins, CDC23 and CDC27, contain a tetratricopeptide repeat (TPR), a protein domain that may be involved in protein-protein interaction. Multiple alternatively spliced variants, encoding the same protein, have been identified. [provided by RefSeq, Jul 2008]
Function	Component of the anaphase promoting complex/cyclosome (APC/C), a cell cycle-regulated E3 ubiquitin ligase that controls progression through mitosis and the G1 phase of the cell cycle. The APC/C complex acts by mediating ubiquitination and subsequent degradation of target proteins: it mainly mediates the formation of 'Lys-11'-linked polyubiquitin chains and, to a lower extent, the formation of 'Lys-48'- and 'Lys-63'-linked polyubiquitin chains. [UniProt]
Calculated Mw	72 kDa
PTM	Phosphorylated. Phosphorylation on Ser-560 occurs specifically during mitosis. [UniProt]
Cellular Localization	Cytoplasm, cytoskeleton, microtubule organizing center, centrosome. Cytoplasm, cytoskeleton, spindle. Note=Colocalizes with CDC27 to the centrosome at all stages of the cell cycle and to the mitotic spindle. [UniProt]

Images

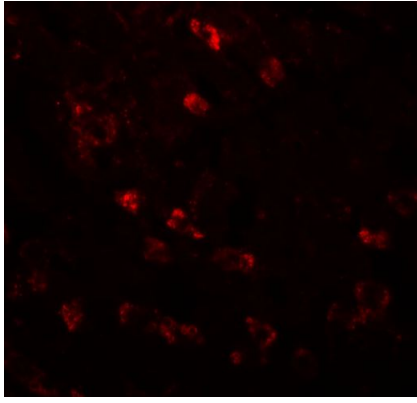
ARG41845 anti-CDC16 / APC6 antibody IHC-P image

Immunohistochemistry: Paraffin-embedded Human liver tissue stained with ARG41845 anti-CDC16 / APC6 antibody at 5 µg/ml dilution.



ARG41845 anti-CDC16 / APC6 antibody WB image

Western blot: Human liver lysate stained with ARG41845 anti-CDC16 / APC6 antibody at 1 and 2 µg/ml dilution.



ARG41845 anti-CDC16 / APC6 antibody IHC image

Immunohistochemistry: Human liver tissue stained with ARG41845 anti-CDC16 / APC6 antibody at 20 µg/ml dilution.