

**ARG41824**  
**anti-SERPINA9 / GCET1 antibody**Package: 100 µl  
Store at: -20°C

### Summary

Product Description	Rabbit Polyclonal antibody recognizes SERPINA9 / GCET1
Tested Reactivity	Hu, Ms, Rat
Tested Application	WB
Host	Rabbit
Clonality	Polyclonal
Isotype	IgG
Target Name	SERPINA9 / GCET1
Species	Human
Immunogen	Synthetic peptide of Human SERPINA9 / GCET1.
Conjugation	Un-conjugated
Alternate Names	SERPINA11; Centerin; Germinal center B-cell-expressed transcript 1 protein; SERPINA11b; GCET1; Serpin A9

### Application Instructions

Application table	Application	Dilution
	WB	1:500 - 1:2000
Application Note	* The dilutions indicate recommended starting dilutions and the optimal dilutions or concentrations should be determined by the scientist.	
Positive Control	MCF7	
Observed Size	~ 48 kDa	

### Properties

Form	Liquid
Purification	Affinity purified.
Buffer	PBS (pH 7.4), 150 mM NaCl, 0.02% Sodium azide and 50% Glycerol.
Preservative	0.02% Sodium azide
Stabilizer	50% Glycerol
Storage instruction	For continuous use, store undiluted antibody at 2-8°C for up to a week. For long-term storage, aliquot and store at -20°C. Storage in frost free freezers is not recommended. Avoid repeated freeze/thaw cycles. Suggest spin the vial prior to opening. The antibody solution should be gently mixed before use.
Note	For laboratory research only, not for drug, diagnostic or other use.

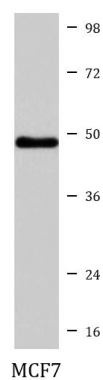
## Bioinformation

---

Gene Symbol	SERPINA9
Gene Full Name	serpin peptidase inhibitor, clade A (alpha-1 antiproteinase, antitrypsin), member 9
Function	Protease inhibitor that inhibits trypsin and trypsin-like serine proteases (in vitro). Inhibits plasmin and thrombin with lower efficiency (in vitro). [UniProt]
Calculated Mw	47 kDa
Cellular Localization	Isoform 1: Secreted. Isoform 2: Cytoplasm. Isoform 3: Cytoplasm. Isoform 4: Cytoplasm. Isoform 5: Cytoplasm. Isoform 6: Cytoplasm. Isoform 7: Membrane; Single-pass type II membrane protein. [UniProt]

## Images

---



ARG41824 anti-SERPINA9 / GCET1 antibody WB image

Western blot: MCF7 cell lysate stained with ARG41824 anti-SERPINA9 / GCET1 antibody.