

## ARG41813 anti-WFDC2 / HE4 antibody

Package: 100 µl  
Store at: -20°C

### Summary

|                     |   |
|---------------------|---|
| Product Description | Rabbit Polyclonal antibody recognizes WFDC2 / HE4   |
| Tested Reactivity   | Hu  |
| Tested Application  | IHC-P, IP, WB   |
| Host                | Rabbit  |
| Clonality           | Polyclonal  |
| Isotype             | IgG   |
| Target Name         | WFDC2 / HE4   |
| Species             | Human   |
| Immunogen           | Synthetic peptide of Human WFDC2 / HE4.   |
| Conjugation         | Un-conjugated   |
| Alternate Names     | HE4; dJ461P17.6; WAP5; Putative protease inhibitor WAP5; Major epididymis-specific protein E4; WAP four-disulfide core domain protein 2; Epididymal secretory protein E4; EDDM4 |

### Application Instructions

| Application table | Application  | Dilution       |
|-------------------|--|----------------|
|                   | IHC-P  | 1:50 - 1:200   |
|                   | IP   | 1:50           |
|                   | WB   | 1:500 - 1:2000 |
| Application Note  | * The dilutions indicate recommended starting dilutions and the optimal dilutions or concentrations should be determined by the scientist. |                |
| Positive Control  | Human ovary cancer   |                |
| Observed Size     | ~ 19 kDa   |                |

### Properties

|                     |   |
|---------------------|---|
| Form                | Liquid  |
| Purification        | Affinity purified.  |
| Buffer              | PBS (pH 7.4), 150 mM NaCl, 0.02% Sodium azide and 50% Glycerol.   |
| Preservative        | 0.02% Sodium azide  |
| Stabilizer          | 50% Glycerol  |
| Storage instruction | For continuous use, store undiluted antibody at 2-8°C for up to a week. For long-term storage, aliquot and store at -20°C. Storage in frost free freezers is not recommended. Avoid repeated freeze/thaw cycles. Suggest spin the vial prior to opening. The antibody solution should be gently mixed before use. |

Note For laboratory research only, not for drug, diagnostic or other use.

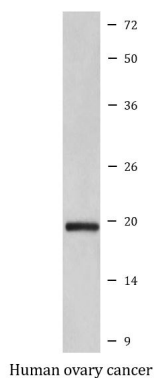
## Bioinformation

---

|                       |  |
|-----------------------|--|
| Gene Symbol           | WFDC2  |
| Gene Full Name        | WAP four-disulfide core domain 2   |
| Background            | This gene encodes a protein that is a member of the WFDC domain family. The WFDC domain, or WAP Signature motif, contains eight cysteines forming four disulfide bonds at the core of the protein, and functions as a protease inhibitor in many family members. This gene is expressed in pulmonary epithelial cells, and was also found to be expressed in some ovarian cancers. The encoded protein is a small secretory protein, which may be involved in sperm maturation. [provided by RefSeq, Jul 2008] |
| Function              | Broad range protease inhibitor. [UniProt]  |
| Calculated Mw         | 13 kDa   |
| Cellular Localization | Secreted. [UniProt]  |

## Images

---



ARG41813 anti-WFDC2 / HE4 antibody WB image

Western blot: Human ovary cancer whole tissue lysate stained with ARG41813 anti-WFDC2 / HE4 antibody.