

ARG41795 anti-PPP1R1A antibody

Package: 100 µl
Store at: -20°C

Summary

Product Description	Rabbit Polyclonal antibody recognizes PPP1R1A
Tested Reactivity	Hu, Ms, Rat
Tested Application	FACS, ICC/IF, IHC-P, IP, WB
Host	Rabbit
Clonality	Polyclonal
Isotype	IgG
Target Name	PPP1R1A
Species	Human
Immunogen	Synthetic peptide of Human PPP1R1A.
Conjugation	Un-conjugated
Alternate Names	Protein phosphatase 1 regulatory subunit 1A; IPP1; I1; IPP-1; I-1; Protein phosphatase inhibitor 1

Application Instructions

Application table	Application	Dilution
	FACS	1:20
	ICC/IF	1:50 - 1:200
	IHC-P	1:50 - 1:200
	IP	1:50
	WB	1:5000 - 1:20000
Application Note	* The dilutions indicate recommended starting dilutions and the optimal dilutions or concentrations should be determined by the scientist.	
Positive Control	Rat brain	
Observed Size	~ 27 kDa	

Properties

Form	Liquid
Purification	Affinity purified.
Buffer	PBS (pH 7.4), 150 mM NaCl, 0.02% Sodium azide and 50% Glycerol.
Preservative	0.02% Sodium azide
Stabilizer	50% Glycerol
Storage instruction	For continuous use, store undiluted antibody at 2-8°C for up to a week. For long-term storage, aliquot

and store at -20°C. Storage in frost free freezers is not recommended. Avoid repeated freeze/thaw cycles. Suggest spin the vial prior to opening. The antibody solution should be gently mixed before use.

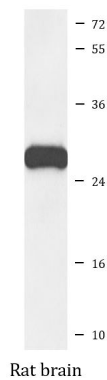
Note

For laboratory research only, not for drug, diagnostic or other use.

Bioinformation

Gene Symbol	PPP1R1A
Gene Full Name	protein phosphatase 1, regulatory (inhibitor) subunit 1A
Function	Inhibitor of protein-phosphatase 1. This protein may be important in hormonal control of glycogen metabolism. Hormones that elevate intracellular cAMP increase I-1 activity in many tissues. I-1 activation may impose cAMP control over proteins that are not directly phosphorylated by PKA. Following a rise in intracellular calcium, I-1 is inactivated by calcineurin (or PP2B). Does not inhibit type-2 phosphatases. [UniProt]
Calculated Mw	19 kDa
PTM	Phosphorylation of Thr-35 is required for activity. [UniProt]

Images



ARG41795 anti-PPP1R1A antibody WB image

Western blot: Rat brain lysate stained with ARG41795 anti-PPP1R1A antibody.