

## ARG41786 anti-Calreticulin antibody

Package: 100 µl  
Store at: -20°C

### Summary

Product Description	Rabbit Polyclonal antibody recognizes Calreticulin
Tested Reactivity	Hu, Ms, Rat, Mk
Tested Application	FACS, ICC/IF, IHC-P, WB
Host	Rabbit
Clonality	Polyclonal
Isotype	IgG
Target Name	Calreticulin
Species	Human
Immunogen	Synthetic peptide of Human Calreticulin.
Conjugation	Un-conjugated
Alternate Names	CALR; Calreticulin; Calregulin; CC1qR; SSA; CRT; RO; Sicca Syndrome Antigen A (Autoantigen Ro; Calreticulin); Endoplasmic Reticulum Resident Protein 60; FLJ26680; CALR1; CRP55; ERp60; HACBP; Grp60; Epididymis Secretory Sperm Binding Protein Li 99n; Autoantigen Ro; HEL-S-99n; CRTc

### Application Instructions

Application table	Application	Dilution
	FACS	1:50
	ICC/IF	1:50 - 1:200
	IHC-P	1:50 - 1:200
	WB	1:500 - 1:2000
Application Note	* The dilutions indicate recommended starting dilutions and the optimal dilutions or concentrations should be determined by the scientist.	
Positive Control	HeLa	
Observed Size	~ 55 kDa	

### Properties

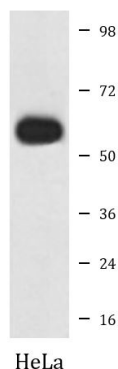
Form	Liquid
Purification	Affinity purified.
Buffer	PBS (pH 7.4), 150 mM NaCl, 0.02% Sodium azide and 50% Glycerol.
Preservative	0.02% Sodium azide
Stabilizer	50% Glycerol

<b>Storage instruction</b>	For continuous use, store undiluted antibody at 2-8°C for up to a week. For long-term storage, aliquot and store at -20°C. Storage in frost free freezers is not recommended. Avoid repeated freeze/thaw cycles. Suggest spin the vial prior to opening. The antibody solution should be gently mixed before use.
<b>Note</b>	For laboratory research only, not for drug, diagnostic or other use.

## Bioinformation

<b>Gene Symbol</b>	CALR
<b>Gene Full Name</b>	calreticulin
<b>Background</b>	Calreticulin is a highly conserved chaperone protein which resides primarily in the endoplasmic reticulum, and is involved in a variety of cellular processes, among them, cell adhesion. Additionally, it functions in protein folding quality control and calcium homeostasis. Calreticulin is also found in the nucleus, suggesting that it may have a role in transcription regulation. Systemic lupus erythematosus is associated with increased autoantibody titers against calreticulin. Recurrent mutations in calreticulin have been linked to various neoplasms, including the myeloproliferative type.
<b>Function</b>	Calcium-binding chaperone that promotes folding, oligomeric assembly and quality control in the endoplasmic reticulum (ER) via the calreticulin/calnexin cycle. This lectin interacts transiently with almost all of the monoglucosylated glycoproteins that are synthesized in the ER.
<b>Research Area</b>	Controls and Markers antibody; Signaling Transduction antibody; ER Marker antibody; Endoplasmic reticulum antibody
<b>Calculated Mw</b>	48 kDa
<b>PTM</b>	Acetylation, Disulfide bond, Glycoprotein, Hydroxylation
<b>Cellular Localization</b>	Cytoplasm, Cytoplasmic vesicle, Endoplasmic reticulum, Extracellular matrix, Lysosome, Sarcoplasmic reticulum, Secreted

## Images



ARG41786 anti-Calreticulin antibody WB image

Western blot: HeLa cell lysate stained with ARG41786 anti-Calreticulin antibody.