

ARG41780 anti-CPI-17 antibody

Package: 100 µl
Store at: -20°C

Summary

Product Description	Rabbit Polyclonal antibody recognizes CPI-17
Tested Reactivity	Hu, Ms, Rat
Tested Application	IP, WB
Host	Rabbit
Clonality	Polyclonal
Isotype	IgG
Target Name	CPI-17
Species	Human
Immunogen	Synthetic peptide of Human CPI-17.
Conjugation	Un-conjugated
Alternate Names	CPI-17; Protein kinase C-potentiated inhibitor protein of 17 kDa; CPI17; 17 kDa PKC-potentiated inhibitory protein of PP1; PPP1INL; Protein phosphatase 1 regulatory subunit 14A

Application Instructions

Application table	Application	Dilution
	IP	1:30
	WB	1:500 - 1:2000
Application Note	* The dilutions indicate recommended starting dilutions and the optimal dilutions or concentrations should be determined by the scientist.	
Positive Control	MCF7	
Observed Size	~ 20 kDa	

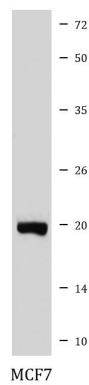
Properties

Form	Liquid
Purification	Affinity purified.
Buffer	PBS (pH 7.4), 150 mM NaCl, 0.02% Sodium azide and 50% Glycerol.
Preservative	0.02% Sodium azide
Stabilizer	50% Glycerol
Storage instruction	For continuous use, store undiluted antibody at 2-8°C for up to a week. For long-term storage, aliquot and store at -20°C. Storage in frost free freezers is not recommended. Avoid repeated freeze/thaw cycles. Suggest spin the vial prior to opening. The antibody solution should be gently mixed before use.
Note	For laboratory research only, not for drug, diagnostic or other use.

Bioinformation

Gene Symbol	PPP1R14A
Gene Full Name	protein phosphatase 1, regulatory (inhibitor) subunit 14A
Background	The protein encoded by this gene belongs to the protein phosphatase 1 (PP1) inhibitor family. This protein is an inhibitor of smooth muscle myosin phosphatase, and has higher inhibitory activity when phosphorylated. Inhibition of myosin phosphatase leads to increased myosin phosphorylation and enhanced smooth muscle contraction. Alternatively spliced transcript variants encoding different isoforms have been noted for this gene. [provided by RefSeq, Sep 2011]
Function	Inhibitor of PPP1CA. Has over 1000-fold higher inhibitory activity when phosphorylated, creating a molecular switch for regulating the phosphorylation status of PPP1CA substrates and smooth muscle contraction. [UniProt]
Calculated Mw	17 kDa
Cellular Localization	Cytoplasm. [UniProt]

Images



ARG41780 anti-CPI-17 antibody WB image

Western blot: MCF7 cell lysate stained with ARG41780 anti-CPI-17 antibody.