

## ARG41773 anti-SFRP1 antibody

Package: 50 µg  
Store at: -20°C

### Summary

Product Description	Rabbit Polyclonal antibody recognizes SFRP1
Tested Reactivity	Hu, Ms, Rat
Tested Application	FACS, ICC/IF, IHC-P, WB
Host	Rabbit
Clonality	Polyclonal
Isotype	IgG
Target Name	SFRP1
Species	Human
Immunogen	Recombinant protein corresponding to A204-K314 of Human SFRP1.
Conjugation	Un-conjugated
Alternate Names	FRP-1; FRP1; Secreted apoptosis-related protein 2; FrzA; Secreted frizzled-related protein 1; SARP2; SARP-2; FRP; sFRP-1

### Application Instructions

Application table	Application	Dilution
	FACS	1:150 - 1:500
	ICC/IF	1:200 - 1:1000
	IHC-P	1:200 - 1:1000
	WB	1:500 - 1:2000
Application Note	IHC-P: Antigen Retrieval: Heat mediation was performed in Citrate buffer (pH 6.0) for 20 min. * The dilutions indicate recommended starting dilutions and the optimal dilutions or concentrations should be determined by the scientist.	
Observed Size	~ 35 kDa	

### Properties

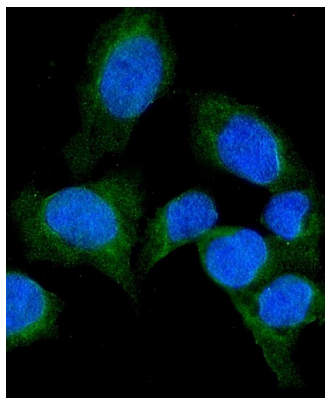
Form	Liquid
Purification	Affinity purification with immunogen.
Buffer	0.2% Na <sub>2</sub> HPO <sub>4</sub> , 0.9% NaCl, 0.05% Sodium azide and 4% Trehalose.
Preservative	0.05% Sodium azide
Stabilizer	4% Trehalose
Concentration	0.5 mg/ml

<b>Storage instruction</b>	For continuous use, store undiluted antibody at 2-8°C for up to a week. For long-term storage, aliquot and store at -20°C or below. Storage in frost free freezers is not recommended. Avoid repeated freeze/thaw cycles. Suggest spin the vial prior to opening. The antibody solution should be gently mixed before use.
<b>Note</b>	For laboratory research only, not for drug, diagnostic or other use.

## Bioinformation

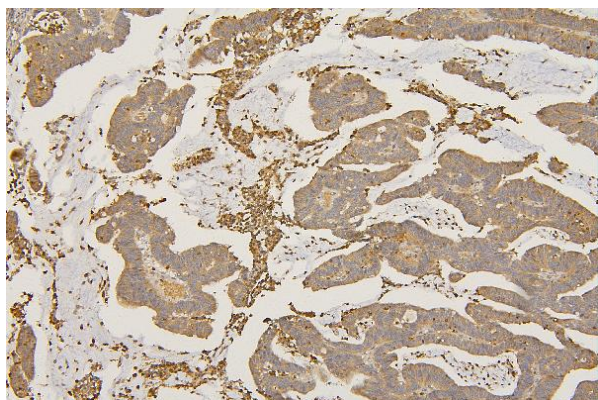
<b>Gene Symbol</b>	SFRP1
<b>Gene Full Name</b>	secreted frizzled-related protein 1
<b>Background</b>	This gene encodes a member of the SFRP family that contains a cysteine-rich domain homologous to the putative Wnt-binding site of Frizzled proteins. Members of this family act as soluble modulators of Wnt signaling; epigenetic silencing of SFRP genes leads to deregulated activation of the Wnt-pathway which is associated with cancer. This gene may also be involved in determining the polarity of photoreceptor cells in the retina. [provided by RefSeq, Sep 2009]
<b>Function</b>	Soluble frizzled-related proteins (SFRPS) function as modulators of Wnt signaling through direct interaction with Wnts. They have a role in regulating cell growth and differentiation in specific cell types. SFRP1 decreases intracellular beta-catenin levels (By similarity). Has antiproliferative effects on vascular cells, in vitro and in vivo, and can induce, in vivo, an angiogenic response. In vascular cell cycle, delays the G1 phase and entry into the S phase (By similarity). In kidney development, inhibits tubule formation and bud growth in metanephroi (By similarity). Inhibits WNT1/WNT4-mediated TCF-dependent transcription. [UniProt]
<b>Calculated Mw</b>	35 kDa
<b>Cellular Localization</b>	Secreted. Note=Cell membrane or extracellular matrix-associated. Released by heparin-binding. [UniProt]

## Images



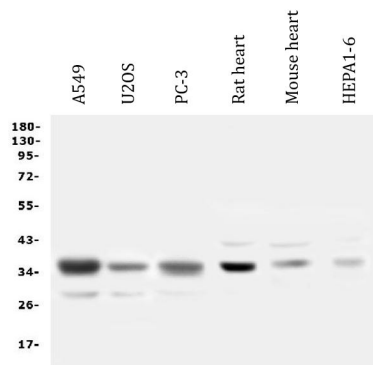
ARG41773 anti-SFRP1 antibody ICC/IF image

Immunofluorescence: U2OS cells were blocked with 10% goat serum and then stained with ARG41773 anti-SFRP1 antibody (green) at 2 µg/ml dilution, overnight at 4°C. DAPI (blue) for nuclear staining.



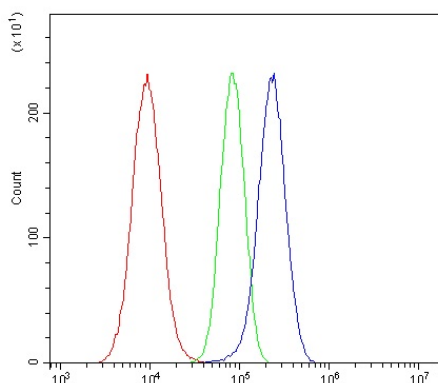
ARG41773 anti-SFRP1 antibody IHC-P image

Immunohistochemistry: Paraffin-embedded Human colon cancer tissue. Antigen Retrieval: Heat mediation was performed in Citrate buffer (pH 6.0, epitope retrieval solution) for 20 min. The tissue section was blocked with 10% goat serum. The tissue section was then stained with ARG41773 anti-SFRP1 antibody at 1 µg/ml dilution, overnight at 4°C.



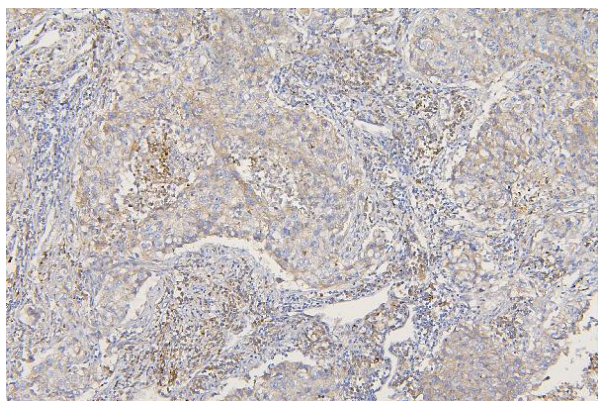
ARG41773 anti-SFRP1 antibody WB image

Western blot: 50 µg of samples under reducing conditions. A549, U2OS, PC-3, Rat heart, Mouse heart and HEP1-6 whole cell lysates stained with ARG41773 anti-SFRP1 antibody at 0.5 µg/ml dilution, overnight at 4°C.



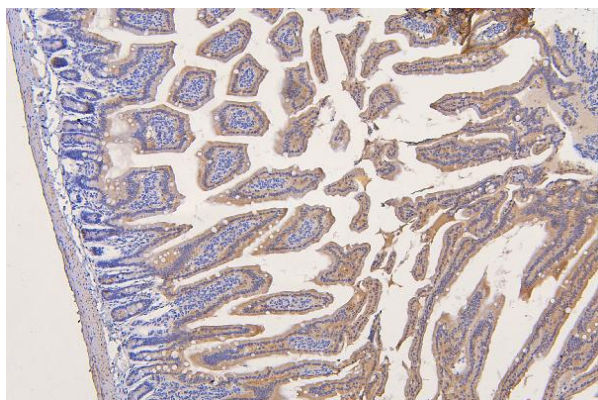
ARG41773 anti-SFRP1 antibody FACS image

Flow Cytometry: A549 cells were blocked with 10% normal goat serum and then stained with ARG41773 anti-SFRP1 antibody (blue) at 1 µg/10<sup>6</sup> cells for 30 min at 20°C, followed by incubation with DyLight<sup>®</sup>488 labelled secondary antibody. Isotype control antibody (green) was rabbit IgG (1 µg/10<sup>6</sup> cells) used under the same conditions. Unlabelled sample (red) was also used as a control.



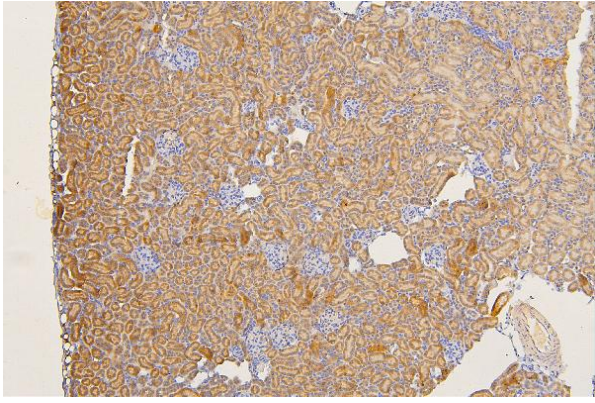
ARG41773 anti-SFRP1 antibody IHC-P image

Immunohistochemistry: Paraffin-embedded Human lung cancer tissue. Antigen Retrieval: Heat mediation was performed in Citrate buffer (pH 6.0, epitope retrieval solution) for 20 min. The tissue section was blocked with 10% goat serum. The tissue section was then stained with ARG41773 anti-SFRP1 antibody at 1 µg/ml dilution, overnight at 4°C.



ARG41773 anti-SFRP1 antibody IHC-P image

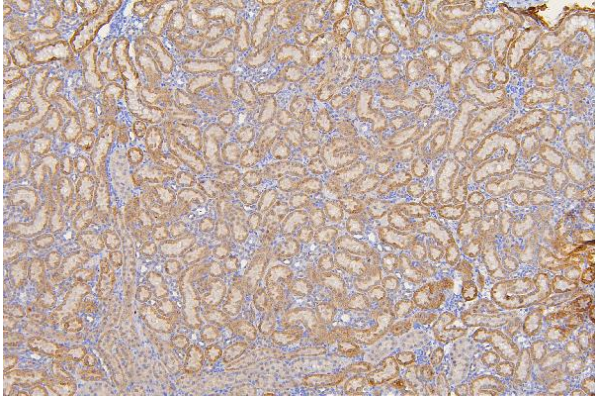
Immunohistochemistry: Paraffin-embedded Mouse intestine tissue. Antigen Retrieval: Heat mediation was performed in Citrate buffer (pH 6.0, epitope retrieval solution) for 20 min. The tissue section was blocked with 10% goat serum. The tissue section was then stained with ARG41773 anti-SFRP1 antibody at 1 µg/ml dilution, overnight at 4°C.



ARG41773 anti-SFRP1 antibody IHC-P image

Immunohistochemistry: Paraffin-embedded Mouse kidney tissue. Antigen Retrieval: Heat mediation was performed in Citrate buffer (pH 6.0, epitope retrieval solution) for 20 min. The tissue section was blocked with 10% goat serum. The tissue section was then stained with ARG41773 anti-SFRP1 antibody at 1  $\mu$ g/ml dilution, overnight at 4°C.

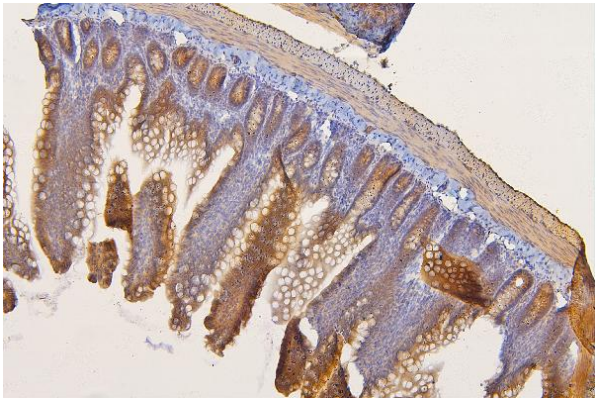
---



ARG41773 anti-SFRP1 antibody IHC-P image

Immunohistochemistry: Paraffin-embedded Rat kidney tissue. Antigen Retrieval: Heat mediation was performed in Citrate buffer (pH 6.0, epitope retrieval solution) for 20 min. The tissue section was blocked with 10% goat serum. The tissue section was then stained with ARG41773 anti-SFRP1 antibody at 1  $\mu$ g/ml dilution, overnight at 4°C.

---



ARG41773 anti-SFRP1 antibody IHC-P image

Immunohistochemistry: Paraffin-embedded Rat intestine tissue. Antigen Retrieval: Heat mediation was performed in Citrate buffer (pH 6.0, epitope retrieval solution) for 20 min. The tissue section was blocked with 10% goat serum. The tissue section was then stained with ARG41773 anti-SFRP1 antibody at 1  $\mu$ g/ml dilution, overnight at 4°C.

---