

## ARG41766 anti-CPI-17 antibody

Package: 50 µg  
Store at: -20°C

### Summary

Product Description	Rabbit Polyclonal antibody recognizes CPI-17
Tested Reactivity	Hu, Ms, Rat
Tested Application	FACS, ICC/IF, IHC-P, WB
Host	Rabbit
Clonality	Polyclonal
Isotype	IgG
Target Name	CPI-17
Species	Human
Immunogen	Recombinant protein corresponding to L30-Q126 of Human CPI-17.
Conjugation	Un-conjugated
Alternate Names	CPI-17; Protein kinase C-potentiated inhibitor protein of 17 kDa; CPI17; 17 kDa PKC-potentiated inhibitory protein of PP1; PPP1INL; Protein phosphatase 1 regulatory subunit 14A

### Application Instructions

Application table	Application	Dilution
	FACS	1:150 - 1:500
	ICC/IF	1:200 - 1:1000
	IHC-P	1:200 - 1:1000
	WB	1:500 - 1:2000
Application Note	IHC-P: Antigen Retrieval: Heat mediation was performed in Citrate buffer (pH 6.0) for 20 min. * The dilutions indicate recommended starting dilutions and the optimal dilutions or concentrations should be determined by the scientist.	
Observed Size	~ 19 kDa	

### Properties

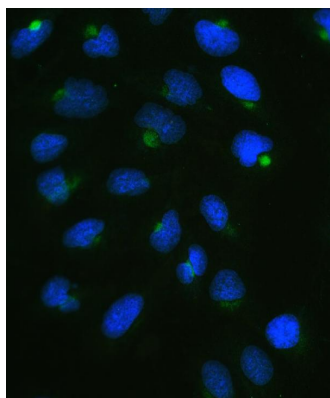
Form	Liquid
Purification	Affinity purification with immunogen.
Buffer	0.2% Na <sub>2</sub> HPO <sub>4</sub> , 0.9% NaCl, 0.05% Sodium azide and 5% BSA.
Preservative	0.05% Sodium azide
Stabilizer	5% BSA
Concentration	0.5 mg/ml

Storage instruction	For continuous use, store undiluted antibody at 2-8°C for up to a week. For long-term storage, aliquot and store at -20°C or below. Storage in frost free freezers is not recommended. Avoid repeated freeze/thaw cycles. Suggest spin the vial prior to opening. The antibody solution should be gently mixed before use.
Note	For laboratory research only, not for drug, diagnostic or other use.

## Bioinformation

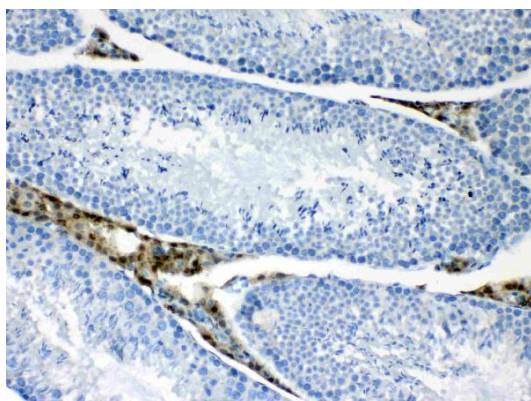
Gene Symbol	PPP1R14A
Gene Full Name	protein phosphatase 1, regulatory (inhibitor) subunit 14A
Background	The protein encoded by this gene belongs to the protein phosphatase 1 (PP1) inhibitor family. This protein is an inhibitor of smooth muscle myosin phosphatase, and has higher inhibitory activity when phosphorylated. Inhibition of myosin phosphatase leads to increased myosin phosphorylation and enhanced smooth muscle contraction. Alternatively spliced transcript variants encoding different isoforms have been noted for this gene. [provided by RefSeq, Sep 2011]
Function	Inhibitor of PPP1CA. Has over 1000-fold higher inhibitory activity when phosphorylated, creating a molecular switch for regulating the phosphorylation status of PPP1CA substrates and smooth muscle contraction. [UniProt]
Calculated Mw	17 kDa
Cellular Localization	Cytoplasm. [UniProt]

## Images



ARG41766 anti-CPI-17 antibody ICC/IF image

Immunofluorescence: U2OS cells were blocked with 10% goat serum and then stained with ARG41766 anti-CPI-17 antibody (green) at 2 µg/ml dilution, overnight at 4°C. DAPI (blue) for nuclear staining.

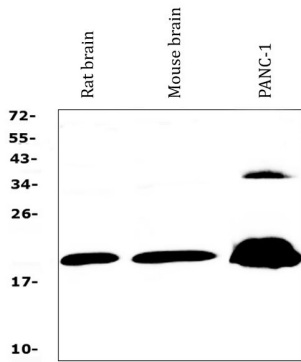


ARG41766 anti-CPI-17 antibody IHC-P image

Immunohistochemistry: Paraffin-embedded Mouse testis tissue. Antigen Retrieval: Heat mediation was performed in Citrate buffer (pH 6.0, epitope retrieval solution) for 20 min. The tissue section was blocked with 10% goat serum. The tissue section was then stained with ARG41766 anti-CPI-17 antibody at 1 µg/ml dilution, overnight at 4°C.

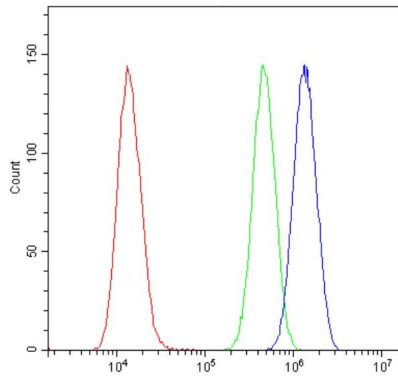
### ARG41766 anti-CPI-17 antibody WB image

Western blot: 50 µg of samples under reducing conditions. Rat brain, Mouse brain and PANC-1 whole cell lysates stained with ARG41766 anti-CPI-17 antibody at 0.5 µg/ml dilution, overnight at 4°C.



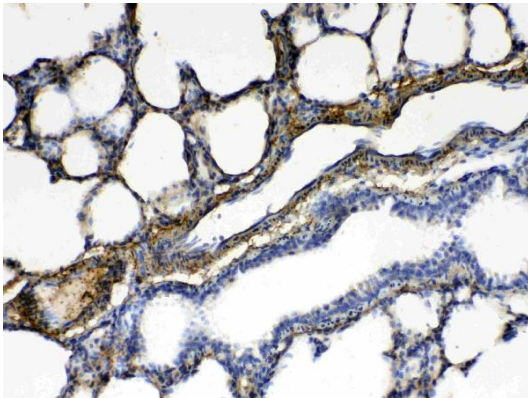
### ARG41766 anti-CPI-17 antibody FACS image

Flow Cytometry: U2OS cells were blocked with 10% normal goat serum and then stained with ARG41766 anti-CPI-17 antibody (blue) at 1 µg/10<sup>6</sup> cells for 30 min at 20°C, followed by incubation with DyLight<sup>®</sup>488 labelled secondary antibody. Isotype control antibody (green) was Rabbit IgG (1 µg/10<sup>6</sup> cells) used under the same conditions. Unlabelled sample (red) was also used as a control.



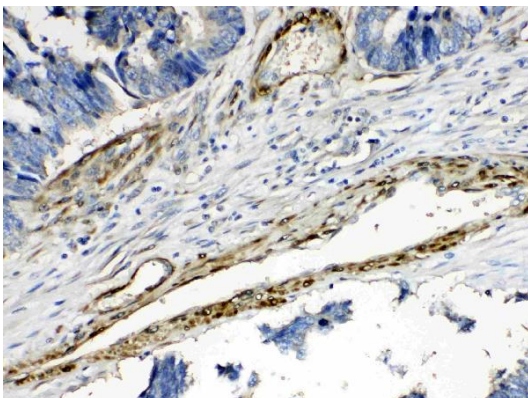
### ARG41766 anti-CPI-17 antibody IHC-P image

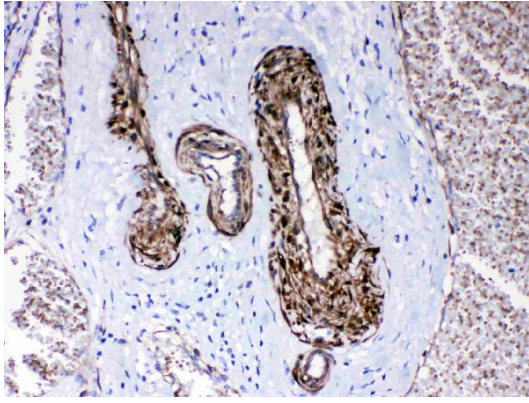
Immunohistochemistry: Paraffin-embedded Rat lung tissue. Antigen Retrieval: Heat mediation was performed in Citrate buffer (pH 6.0, epitope retrieval solution) for 20 min. The tissue section was blocked with 10% goat serum. The tissue section was then stained with ARG41766 anti-CPI-17 antibody at 1 µg/ml dilution, overnight at 4°C.



### ARG41766 anti-CPI-17 antibody IHC-P image

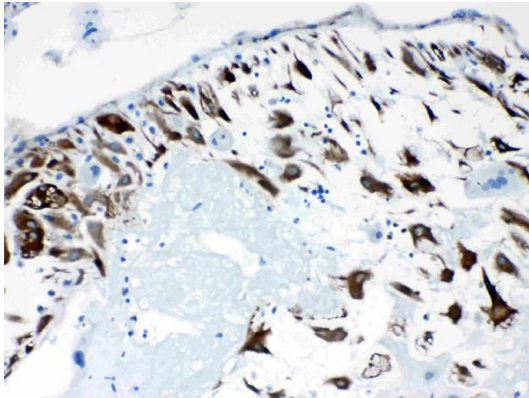
Immunohistochemistry: Paraffin-embedded Human intestinal cancer tissue. Antigen Retrieval: Heat mediation was performed in Citrate buffer (pH 6.0, epitope retrieval solution) for 20 min. The tissue section was blocked with 10% goat serum. The tissue section was then stained with ARG41766 anti-CPI-17 antibody at 1 µg/ml dilution, overnight at 4°C.





ARG41766 anti-CPI-17 antibody IHC-P image

Immunohistochemistry: Paraffin-embedded Human lung cancer tissue. Antigen Retrieval: Heat mediation was performed in Citrate buffer (pH 6.0, epitope retrieval solution) for 20 min. The tissue section was blocked with 10% goat serum. The tissue section was then stained with ARG41766 anti-CPI-17 antibody at 1  $\mu\text{g}/\text{ml}$  dilution, overnight at 4°C.



ARG41766 anti-CPI-17 antibody IHC-P image

Immunohistochemistry: Paraffin-embedded Human placenta tissue. Antigen Retrieval: Heat mediation was performed in Citrate buffer (pH 6.0, epitope retrieval solution) for 20 min. The tissue section was blocked with 10% goat serum. The tissue section was then stained with ARG41766 anti-CPI-17 antibody at 1  $\mu\text{g}/\text{ml}$  dilution, overnight at 4°C.