

ARG41764 anti-WFDC2 / HE4 antibody

Package: 50 µg
Store at: -20°C

Summary

Product Description	Rabbit Polyclonal antibody recognizes WFDC2 / HE4
Tested Reactivity	Ms, Rat
Tested Application	IHC-P, WB
Host	Rabbit
Clonality	Polyclonal
Isotype	IgG
Target Name	WFDC2 / HE4
Species	Rat
Immunogen	Recombinant protein corresponding to E31-F168 of Rat WFDC2 / HE4.
Conjugation	Un-conjugated
Alternate Names	HE4; dJ461P17.6; WAP5; Putative protease inhibitor WAP5; Major epididymis-specific protein E4; WAP four-disulfide core domain protein 2; Epididymal secretory protein E4; EDDM4

Application Instructions

Application table	Application	Dilution
	IHC-P	1:200 - 1:1000
	WB	1:500 - 1:2000
Application Note	IHC-P: Antigen Retrieval: Heat mediation was performed in Citrate buffer (pH 6.0, epitope retrieval solution) for 20 min. * The dilutions indicate recommended starting dilutions and the optimal dilutions or concentrations should be determined by the scientist.	
Observed Size	~ 18 kDa	

Properties

Form	Liquid
Purification	Affinity purification with immunogen.
Buffer	0.2% Na ₂ HPO ₄ , 0.9% NaCl, 0.05% Sodium azide and 5% BSA.
Preservative	0.05% Sodium azide
Stabilizer	5% BSA
Concentration	0.5 mg/ml
Storage instruction	For continuous use, store undiluted antibody at 2-8°C for up to a week. For long-term storage, aliquot and store at -20°C or below. Storage in frost free freezers is not recommended. Avoid repeated freeze/thaw cycles. Suggest spin the vial prior to opening. The antibody solution should be gently mixed

before use.

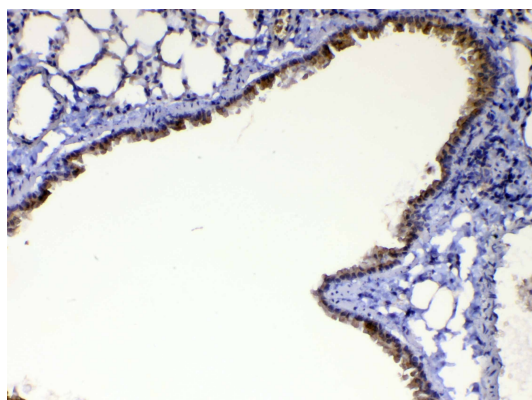
Note

For laboratory research only, not for drug, diagnostic or other use.

Bioinformation

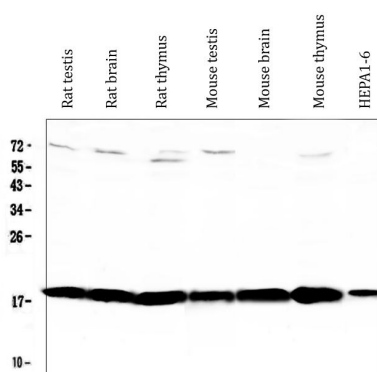
Gene Symbol	WFDC2
Gene Full Name	WAP four-disulfide core domain 2
Background	This gene encodes a protein that is a member of the WFDC domain family. The WFDC domain, or WAP Signature motif, contains eight cysteines forming four disulfide bonds at the core of the protein, and functions as a protease inhibitor in many family members. This gene is expressed in pulmonary epithelial cells, and was also found to be expressed in some ovarian cancers. The encoded protein is a small secretory protein, which may be involved in sperm maturation. [provided by RefSeq, Jul 2008]
Function	Broad range protease inhibitor. [UniProt]
Calculated Mw	13 kDa
Cellular Localization	Secreted. [UniProt]

Images



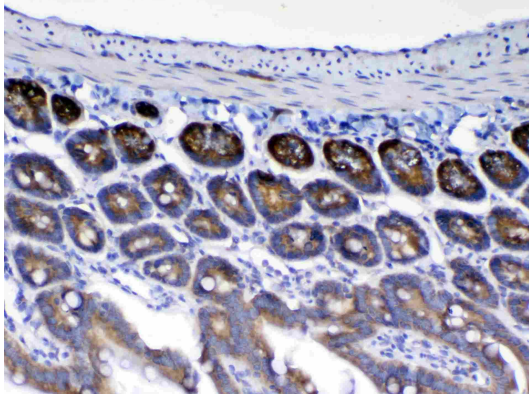
ARG41764 anti-WFDC2 / HE4 antibody IHC-P image

Immunohistochemistry: Paraffin-embedded Mouse lung tissue. Antigen Retrieval: Heat mediation was performed in Citrate buffer (pH 6.0, epitope retrieval solution) for 20 min. The tissue section was blocked with 10% goat serum. The tissue section was then stained with ARG41764 anti-WFDC2 / HE4 antibody at 1 µg/ml dilution, overnight at 4°C.



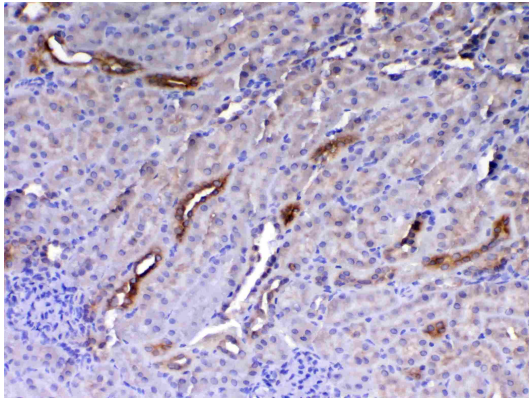
ARG41764 anti-WFDC2 / HE4 antibody WB image

Western blot: 50 µg of samples under reducing conditions. Rat testis, Rat brain, Rat thymus, Mouse testis, Mouse brain, Mouse thymus and HEP1-6 whole cell lysates stained with ARG41764 anti-WFDC2 / HE4 antibody at 0.5 µg/ml dilution, overnight at 4°C.



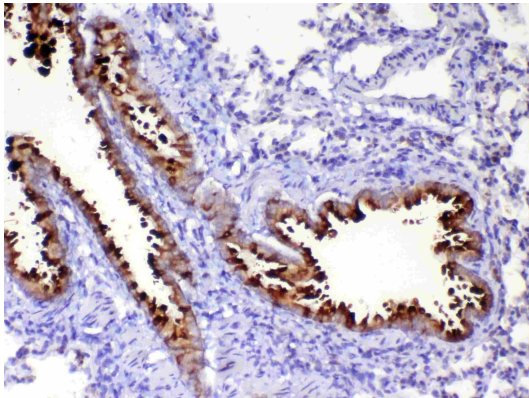
ARG41764 anti-WFDC2 / HE4 antibody IHC-P image

Immunohistochemistry: Paraffin-embedded Mouse small intestine tissue. Antigen Retrieval: Heat mediation was performed in Citrate buffer (pH 6.0, epitope retrieval solution) for 20 min. The tissue section was blocked with 10% goat serum. The tissue section was then stained with ARG41764 anti-WFDC2 / HE4 antibody at 1 μ g/ml dilution, overnight at 4°C.



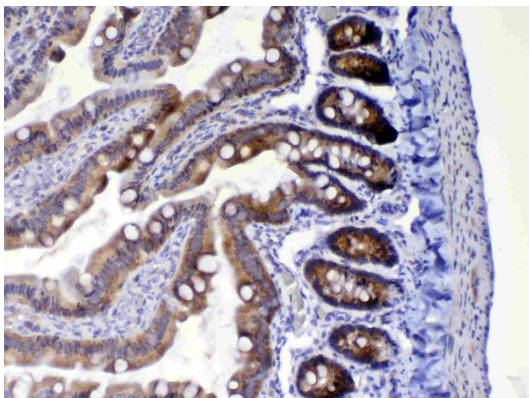
ARG41764 anti-WFDC2 / HE4 antibody IHC-P image

Immunohistochemistry: Paraffin-embedded Rat kidney tissue. Antigen Retrieval: Heat mediation was performed in Citrate buffer (pH 6.0, epitope retrieval solution) for 20 min. The tissue section was blocked with 10% goat serum. The tissue section was then stained with ARG41764 anti-WFDC2 / HE4 antibody at 1 μ g/ml dilution, overnight at 4°C.



ARG41764 anti-WFDC2 / HE4 antibody IHC-P image

Immunohistochemistry: Paraffin-embedded Rat lung tissue. Antigen Retrieval: Heat mediation was performed in Citrate buffer (pH 6.0, epitope retrieval solution) for 20 min. The tissue section was blocked with 10% goat serum. The tissue section was then stained with ARG41764 anti-WFDC2 / HE4 antibody at 1 μ g/ml dilution, overnight at 4°C.



ARG41764 anti-WFDC2 / HE4 antibody IHC-P image

Immunohistochemistry: Paraffin-embedded Rat small intestine tissue. Antigen Retrieval: Heat mediation was performed in Citrate buffer (pH 6.0, epitope retrieval solution) for 20 min. The tissue section was blocked with 10% goat serum. The tissue section was then stained with ARG41764 anti-WFDC2 / HE4 antibody at 1 μ g/ml dilution, overnight at 4°C.