

## ARG41744 anti-DDX6 antibody

Package: 100 µl  
Store at: -20°C

### Summary

Product Description	Rabbit Polyclonal antibody recognizes DDX6
Tested Reactivity	Hu, Ms, Rat
Tested Application	ICC/IF, IHC-P, WB
Host	Rabbit
Clonality	Polyclonal
Isotype	IgG
Target Name	DDX6
Species	Human
Immunogen	Synthetic peptide within aa. 400 to the C-terminus of Human DDX6 (NP_001244120.1).
Conjugation	Un-conjugated
Alternate Names	Probable ATP-dependent RNA helicase DDX6; DEAD box protein 6; Oncogene RCK; ATP-dependent RNA helicase p54; EC 3.6.4.13; RCK; P54; HLR2

### Application Instructions

Application table	Application	Dilution
	ICC/IF	1:50 - 1:200
	IHC-P	1:50 - 1:200
	WB	1:500 - 1:2000
Application Note	* The dilutions indicate recommended starting dilutions and the optimal dilutions or concentrations should be determined by the scientist.	
Positive Control	Rat spleen	
Observed Size	~ 54 kDa	

### Properties

Form	Liquid
Purification	Affinity purified.
Buffer	PBS (pH 7.3), 0.02% Sodium azide and 50% Glycerol.
Preservative	0.02% Sodium azide
Stabilizer	50% Glycerol
Storage instruction	For continuous use, store undiluted antibody at 2-8°C for up to a week. For long-term storage, aliquot and store at -20°C. Storage in frost free freezers is not recommended. Avoid repeated freeze/thaw cycles. Suggest spin the vial prior to opening. The antibody solution should be gently mixed before use.

Note For laboratory research only, not for drug, diagnostic or other use.

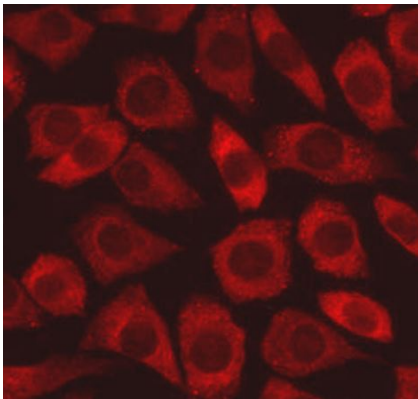
## Bioinformation

---

Gene Symbol	DDX6
Gene Full Name	DEAD (Asp-Glu-Ala-Asp) box helicase 6
Background	This gene encodes a member of the DEAD box protein family. The protein is an RNA helicase found in P-bodies and stress granules, and functions in translation suppression and mRNA degradation. It is required for microRNA-induced gene silencing. Multiple alternatively spliced variants, encoding the same protein, have been identified. [provided by RefSeq, Mar 2012]
Function	In the process of mRNA degradation, may play a role in mRNA decapping. [UniProt]
Calculated Mw	54 kDa
PTM	Sumoylated (PubMed:26184334). [UniProt]
Cellular Localization	Cytoplasm, P-body. Cytoplasm. Nucleus. Note=Upon cellular stress, relocalizes to stress granules (PubMed:26184334). [UniProt]

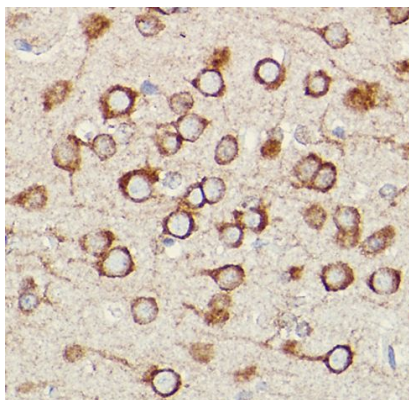
## Images

---



ARG41744 anti-DDX6 antibody ICC/IF image

Immunofluorescence: L929 cells stained with ARG41744 anti-DDX6 antibody at 1:100 dilution.

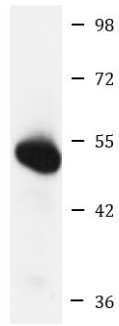


ARG41744 anti-DDX6 antibody IHC-P image

Immunohistochemistry: Paraffin-embedded Rat brain tissue stained with ARG41744 anti-DDX6 antibody at 1:100 dilution.

ARG41744 anti-DDX6 antibody WB image

Western blot: 25 µg of Rat spleen lysate stained with ARG41744 anti-DDX6 antibody at 1:1000 dilution.



Rat spleen

---