

## ARG41734 anti-Syntenin 1 antibody

Package: 50 µg  
Store at: -20°C

### Summary

Product Description	Rabbit Polyclonal antibody recognizes Syntenin 1
Tested Reactivity	Hu
Tested Application	WB
Host	Rabbit
Clonality	Polyclonal
Isotype	IgG
Target Name	Syntenin 1
Species	Human
Immunogen	Recombinant protein corresponding to S2-S259 of Human Syntenin 1.
Conjugation	Un-conjugated
Alternate Names	SYCL; MDA-9; MDA9; Pro-TGF-alpha cytoplasmic domain-interacting protein 18; Syndecan-binding protein 1; TACIP18; Scaffold protein Pbp1; ST1; Syntenin-1; Melanoma differentiation-associated protein 9

### Application Instructions

Application table	Application	Dilution
	WB	1:500 - 1:2000
Application Note	* The dilutions indicate recommended starting dilutions and the optimal dilutions or concentrations should be determined by the scientist.	
Observed Size	~ 32 kDa	

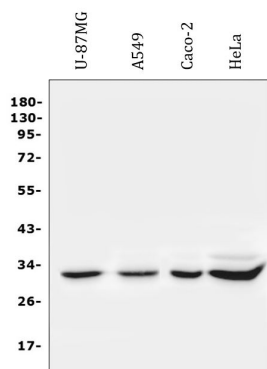
### Properties

Form	Liquid
Purification	Affinity purification with immunogen.
Buffer	0.2% Na <sub>2</sub> HPO <sub>4</sub> , 0.9% NaCl, 0.05% Sodium azide and 4% Trehalose.
Preservative	0.05% Sodium azide
Stabilizer	4% Trehalose
Concentration	0.5 mg/ml
Storage instruction	For continuous use, store undiluted antibody at 2-8°C for up to a week. For long-term storage, aliquot and store at -20°C or below. Storage in frost free freezers is not recommended. Avoid repeated freeze/thaw cycles. Suggest spin the vial prior to opening. The antibody solution should be gently mixed before use.
Note	For laboratory research only, not for drug, diagnostic or other use.

## Bioinformation

Gene Symbol	SDCBP
Gene Full Name	syndecan binding protein (syntenin)
Background	The protein encoded by this gene was initially identified as a molecule linking syndecan-mediated signaling to the cytoskeleton. The syntenin protein contains tandemly repeated PDZ domains that bind the cytoplasmic, C-terminal domains of a variety of transmembrane proteins. This protein may also affect cytoskeletal-membrane organization, cell adhesion, protein trafficking, and the activation of transcription factors. The protein is primarily localized to membrane-associated adherens junctions and focal adhesions but is also found at the endoplasmic reticulum and nucleus. Alternative splicing results in multiple transcript variants encoding different isoforms. [provided by RefSeq, Jul 2008]
Function	Seems to function as an adapter protein. In adherens junctions may function to couple syndecans to cytoskeletal proteins or signaling components. Seems to couple transcription factor SOX4 to the IL-5 receptor (IL5RA). May also play a role in vesicular trafficking. Seems to be required for the targeting of TGFA to the cell surface in the early secretory pathway. [UniProt]
Calculated Mw	32 kDa
PTM	Phosphorylated on tyrosine residues. [UniProt]
Cellular Localization	Cell junction, focal adhesion. Cell junction, adherens junction. Cell membrane; Peripheral membrane protein. Endoplasmic reticulum membrane; Peripheral membrane protein. Nucleus. Melanosome. Cytoplasm, cytosol. Cytoplasm, cytoskeleton. Secreted, exosome. Membrane raft. Note=Mainly membrane-associated. Localized to adherens junctions, focal adhesions and endoplasmic reticulum. Colocalized with actin stress fibers. Also found in the nucleus. [UniProt]

## Images



ARG41734 anti-Syntenin 1 antibody WB image

Western blot: 50 µg of samples under reducing conditions. U-87MG, A549, Caco-2 and HeLa whole cell lysates stained with ARG41734 anti-Syntenin 1 antibody at 0.5 µg/ml dilution, overnight at 4°C.