

ARG41717 anti-TRIM31 antibody

Package: 50 µl
Store at: -20°C

Summary

Product Description	Rabbit Polyclonal antibody recognizes TRIM31
Tested Reactivity	Hu
Tested Application	IHC-P, WB
Host	Rabbit
Clonality	Polyclonal
Isotype	IgG
Target Name	TRIM31
Species	Human
Immunogen	Fusion protein of Human TRIM31.
Conjugation	Un-conjugated
Alternate Names	EC 6.3.2.-; E3 ubiquitin-protein ligase TRIM31; Tripartite motif-containing protein 31; RNF; HCGI; HCG1; C6orf13

Application Instructions

Application table	Application	Dilution
	IHC-P	1:10 - 1:50
	WB	1:200 - 1:1000
Application Note	* The dilutions indicate recommended starting dilutions and the optimal dilutions or concentrations should be determined by the scientist.	
Positive Control	WB: Human kidney IHC-P: Human esophagus cancer	
Observed Size	~ 50 kDa	

Properties

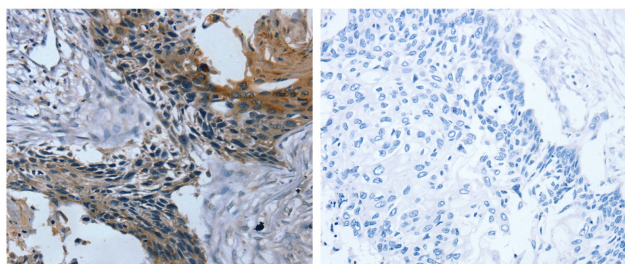
Form	Liquid
Purification	Affinity purification with immunogen.
Buffer	PBS (pH 7.4), 0.05% Sodium azide and 40% Glycerol.
Preservative	0.05% Sodium azide
Stabilizer	40% Glycerol
Concentration	0.2 mg/ml
Storage instruction	For continuous use, store undiluted antibody at 2-8°C for up to a week. For long-term storage, aliquot and store at -20°C. Storage in frost free freezers is not recommended. Avoid repeated freeze/thaw cycles. Suggest spin the vial prior to opening. The antibody solution should be gently mixed before use.

Note For laboratory research only, not for drug, diagnostic or other use.

Bioinformation

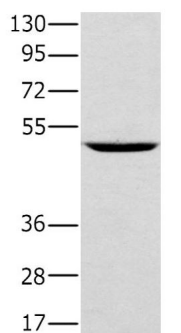
Gene Symbol	TRIM31
Gene Full Name	tripartite motif containing 31
Background	The protein encoded by this gene is a member of the tripartite motif (TRIM) family. The TRIM motif includes three zinc-binding domains, a RING, a B-box type 1 and a B-box type 2, and a coiled-coil region. The protein localizes to both the cytoplasm and the nucleus. Its function has not been identified. [provided by RefSeq, Jul 2008]
Function	Regulator of Src-induced anchorage independent cell growth (By similarity). May have E3 ubiquitin-protein ligase activity. [UniProt]
Calculated Mw	48 kDa
PTM	Auto-ubiquitinated (in vitro). [UniProt]
Cellular Localization	Cytoplasm. Mitochondrion. Note=Predominantly expressed in the cytoplasm but a fraction is associated with the mitochondria. [UniProt]

Images



ARG41717 anti-TRIM31 antibody IHC-P image

Immunohistochemistry: Paraffin-embedded Human esophagus cancer tissue stained with ARG41717 anti-TRIM31 antibody (left) at 1:20 dilution, or the same antibody pre-incubated with fusion protein (right). (Original magnification: X200).



Human kidney

ARG41717 anti-TRIM31 antibody WB image

Western blot: 40 µg of Human kidney lysate stained with ARG41717 anti-TRIM31 antibody at 1:300 dilution.