

ARG41696 anti-Claudin 18 antibody

Package: 50 µl
Store at: -20°C

Summary

Product Description	Rabbit Polyclonal antibody recognizes Claudin 18
Tested Reactivity	Hu
Predict Reactivity	Ms, Rat, Cow, Dog, Gpig, Hrs, Rb
Tested Application	WB
Host	Rabbit
Clonality	Polyclonal
Isotype	IgG
Target Name	Claudin 18
Species	Human
Immunogen	Synthetic peptide around the C-terminal region of Human Claudin 18. (within the following region: PEETNYKAVSYHASGHSVAYKPGGFKASTGFGSNTKNKKIYDGGARTEDE)
Conjugation	Un-conjugated
Alternate Names	Claudin-18; SFTPJ; SFTA5

Application Instructions

Predict Reactivity Note	Predicted Homology Based On Immunogen Sequence: Cow: 85%; Dog: 79%; Guinea pig: 92%; Horse: 100%; Mouse: 100%; Rabbit: 92%; Rat: 100%				
Application table	<table><thead><tr><th>Application</th><th>Dilution</th></tr></thead><tbody><tr><td>WB</td><td>0.5 - 1 µg/ml</td></tr></tbody></table>	Application	Dilution	WB	0.5 - 1 µg/ml
Application	Dilution				
WB	0.5 - 1 µg/ml				
Application Note	* The dilutions indicate recommended starting dilutions and the optimal dilutions or concentrations should be determined by the scientist.				
Positive Control	Jurkat				
Observed Size	~ 28 kDa				

Properties

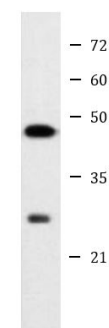
Form	Liquid
Purification	Affinity purified.
Buffer	PBS, 0.09% (w/v) Sodium azide and 2% Sucrose.
Preservative	0.09% (w/v) Sodium azide
Stabilizer	2% Sucrose
Concentration	Batch dependent: 0.5 - 1 mg/ml

Storage instruction	For continuous use, store undiluted antibody at 2-8°C for up to a week. For long-term storage, aliquot and store at -20°C or below. Storage in frost free freezers is not recommended. Avoid repeated freeze/thaw cycles. Suggest spin the vial prior to opening. The antibody solution should be gently mixed before use.
Note	For laboratory research only, not for drug, diagnostic or other use.

Bioinformation

Gene Symbol	CLDN18
Gene Full Name	claudin 18
Background	This gene encodes a member of the claudin family. Claudins are integral membrane proteins and components of tight junction strands. Tight junction strands serve as a physical barrier to prevent solutes and water from passing freely through the paracellular space between epithelial or endothelial cell sheets, and also play critical roles in maintaining cell polarity and signal transductions. This gene is upregulated in patients with ulcerative colitis and highly overexpressed in infiltrating ductal adenocarcinomas. PKC/MAPK/AP-1 (protein kinase C/mitogen-activated protein kinase/activator protein-1) dependent pathway regulates the expression of this gene in gastric cells. Alternatively spliced transcript variants encoding different isoforms have been identified. [provided by RefSeq, Jun 2010]
Function	Plays a major role in tight junction-specific obliteration of the intercellular space, through calcium-independent cell-adhesion activity. [UniProt]
Calculated Mw	28 kDa
Cellular Localization	Cell junction, tight junction. Cell membrane; Multi-pass membrane protein. [UniProt]

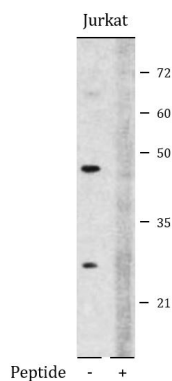
Images



Jurkat

ARG41696 anti-Claudin 18 antibody WB image

Western blot: Jurkat cell lysate stained with ARG41696 anti-Claudin 18 antibody at 1 µg/ml dilution.



ARG41696 anti-Claudin 18 antibody WB image

Western blot: 25 µg of Jurkat cell lysates stained with ARG41696 anti-Claudin 18 antibody at 1 µg/ml dilution. The antibody was used in the presence (right) or the absence (left) of blocking peptide.