

## ARG41672 anti-TBPL1 / TLF / TRF2 antibody

Package: 100 µl  
Store at: -20°C

### Summary

Product Description	Rabbit Polyclonal antibody recognizes TBPL1 / TLF / TRF2
Tested Reactivity	Hu, Ms, Rat
Tested Application	WB
Host	Rabbit
Clonality	Polyclonal
Isotype	IgG
Target Name	TBPL1 / TLF / TRF2
Species	Human
Immunogen	Synthetic peptide of Human TBPL1.
Conjugation	Un-conjugated
Alternate Names	TBP-related protein; TLP; TBP-like protein 1; MGC:9620; MGC:8389; TBP-related factor 2; TATA box-binding protein-related factor 2; Second TBP of unique DNA protein; TRF2; TLF; STUD; 21 kDa TBP-like protein; TBP-like factor; TATA box-binding protein-like protein 1

### Application Instructions

Application table	Application	Dilution
	WB	1:1000 - 1:5000
Application Note	* The dilutions indicate recommended starting dilutions and the optimal dilutions or concentrations should be determined by the scientist.	
Positive Control	HeLa	
Observed Size	~ 24 kDa	

### Properties

Form	Liquid
Purification	Affinity purified.
Buffer	PBS (pH 7.4), 150 mM NaCl, 0.02% Sodium azide and 50% Glycerol.
Preservative	0.02% Sodium azide
Stabilizer	50% Glycerol
Storage instruction	For continuous use, store undiluted antibody at 2-8°C for up to a week. For long-term storage, aliquot and store at -20°C. Storage in frost free freezers is not recommended. Avoid repeated freeze/thaw cycles. Suggest spin the vial prior to opening. The antibody solution should be gently mixed before use.
Note	For laboratory research only, not for drug, diagnostic or other use.

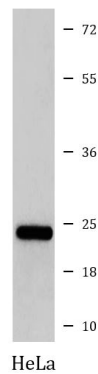
## Bioinformation

---

Gene Symbol	TBPL1
Gene Full Name	TBP-like 1
Background	This gene encodes a member of the TATA box-binding protein family. TATA box-binding proteins play a critical role in transcription by RNA polymerase II as components of the transcription factor IID (TFIID) complex. The encoded protein does not bind to the TATA box and initiates transcription from TATA-less promoters. This gene plays a critical role in spermatogenesis, and single nucleotide polymorphisms in this gene may be associated with male infertility. Alternatively spliced transcript variants have been observed for this gene, and a pseudogene of this gene is located on the long arm of chromosome 3. [provided by RefSeq, Nov 2011]
Function	Part of a specialized transcription system that mediates the transcription of most ribosomal proteins through the 5'-TCT-3' motif which is a core promoter element at these genes. Seems to also mediate the transcription of NF1. Does not bind the TATA box. [UniProt]
Calculated Mw	21 kDa
Cellular Localization	Cytoplasm. Nucleus. [UniProt]

## Images

---



ARG41672 anti-TBPL1 / TLF / TRF2 antibody WB image

Western blot: HeLa cell lysate stained with ARG41672 anti-TBPL1 / TLF / TRF2 antibody.